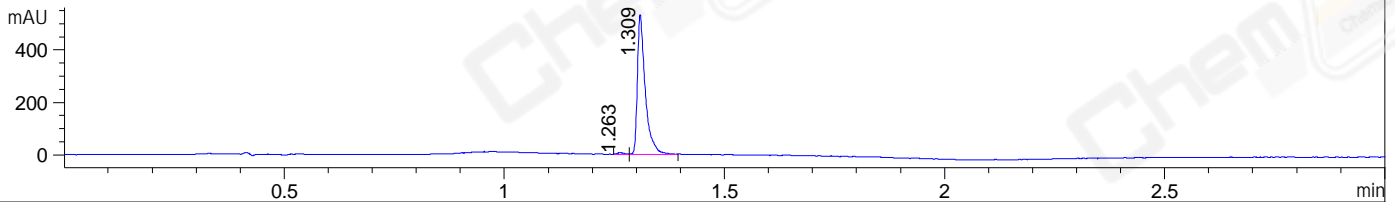
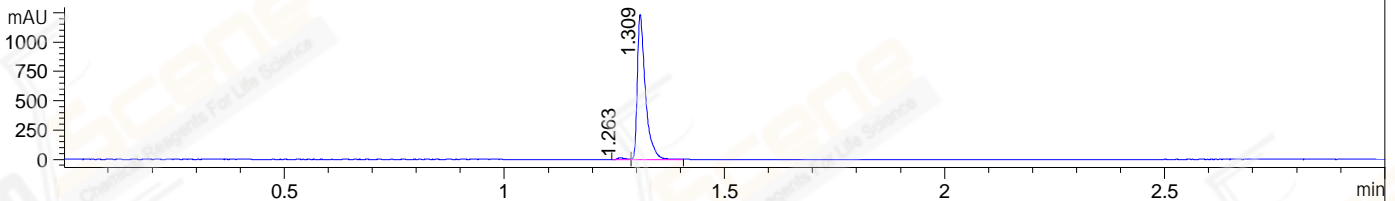


File ..\DATA\2020\20200107\806\BIZ2020-106-WMX7-.D Tgt Mass (CHM):
 Injection Date : 7 Jan 20 1:20 pm +0800 Seq. Line : 58
 Sample Name : BIZ2020-106-WMX7 Location : P1-D-07
 Acq. Operator : ZJ_1432 Inj : 1
 Spec. Reported : MS Integration Inj Volume : 1.2 ul
 Acq. Method : D:\Chem32\1\data\2020\20200107\806\1-POS-3MIN.M
 Analysis Method : D:\CHEM32\1\DATA\2020\20200107\806\1-POS-3MIN.M
 Catalog No : CS-7513 Batch#58683
 Method Info : Mobile Phase: A: water(0.01%TFA) B:ACN(0.01%TFA)
 Gradient: 5% to 95%B within 1.3 min
 Flow Rate :1.8ml/min
 Column :SunFire C18, 4.6*50mm,3.5um A-RP-433
 Oven Temperature : 45□

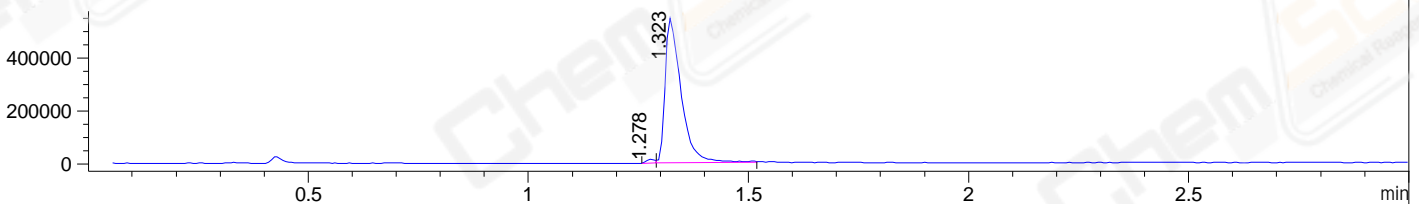
DAD1 B, Sig=214,4 Ref=off



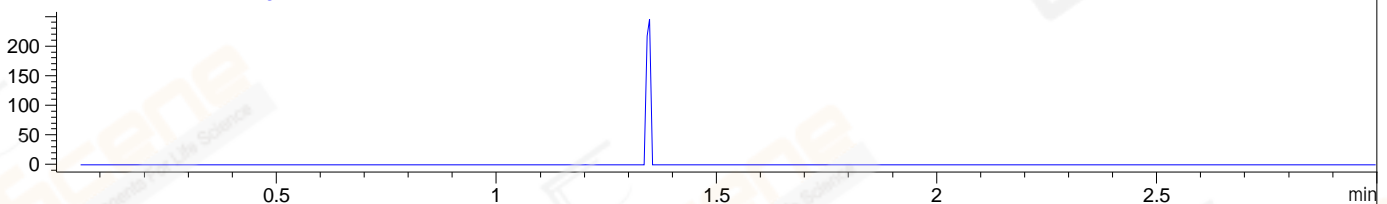
DAD1 C, Sig=254,4 Ref=off



MSD1 TIC, MS File ES-API, Pos, Scan, Frag: 70



Ion 302, MSD1 302, Target Mass 301 +H Positive, EIC=301.7:302.7



Integration Results for DAD1 B, Sig=214,4 Ref=off

RetTim	Width	Area	Height	Area%	MS (+)
1.26	0.02	5.78	6.31	0.87	252
1.31	0.02	658.30	532.41	99.13	266

Integration Results for DAD1 C, Sig=254,4 Ref=off

RetTim	Width	Area	Height	Area%	MS (+)
1.26	0.02	17.79	16.06	1.11	252
1.31	0.02	1583.61	1237.74	98.89	266

Integration Results for MSD1 TIC, MS File

RetTim	Width	Area	Height	Area%	MS (+)
1.28	0.02	18213.53	14593.24	1.30	252
1.32	0.04	1382974.00	548282.25	98.70	266

Ret. Time: 1.28

<<<< POSITIVE SPECTRA >>>>



Ret. Time: 1.32

