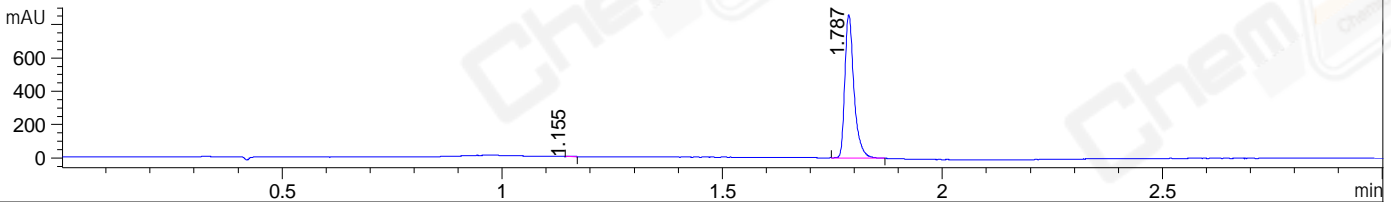
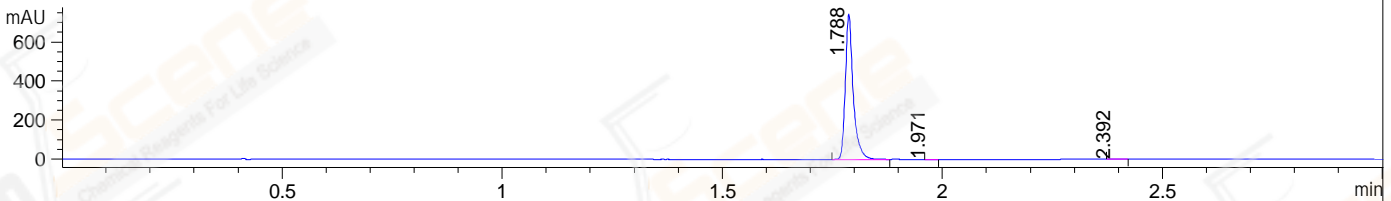


File ..1\DATA\2020\20200110\810\BIZ2020-110-WMX2.D Tgt Mass (CHM):
 Injection Date : 10 Jan 20 6:28 pm +0800 Seq. Line : 42
 Sample Name : BIZ2020-110-WMX2 Location : P1-E-02
 Acq. Operator : ZJ_1432 Inj : 1
 Spec. Reported : MS Integration Inj Volume : 1 ul
 Acq. Method : D:\Chem32\1\data\2020\20200110\810\1-POS-3MIN.M
 Analysis Method : D:\CHEM32\1\DATA\2020\20200110\810\1-POS-3MIN.M
 Catalog No : CS-0109594 Batch#58830
 Method Info : Mobile Phase: A: water(0.01%TFA) B:ACN(0.01%TFA)
 Gradient: 5% to 95%B within 1.3 min
 Flow Rate :1.8ml/min
 Column :SunFire C18, 4.6*50mm,3.5um A-RP-433
 Oven Temperature : 45□

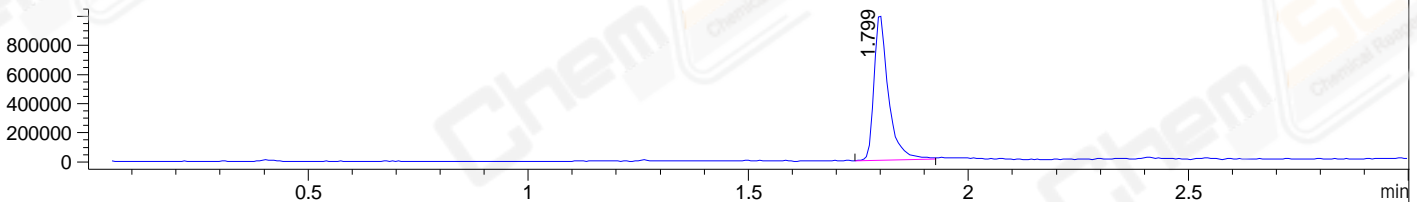
DAD1 B, Sig=214,4 Ref=off



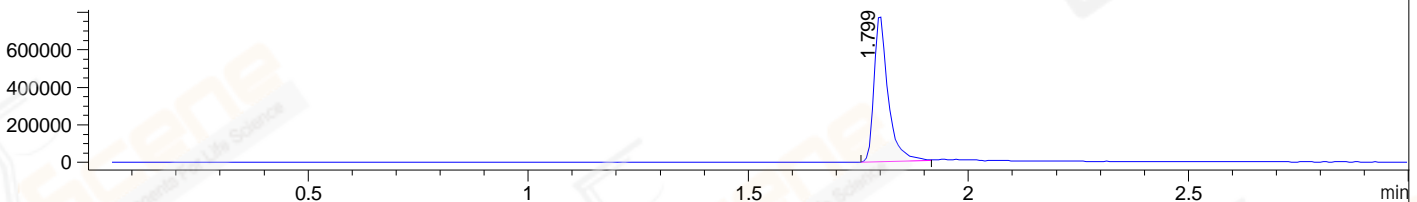
DAD1 C, Sig=254,4 Ref=off



MSD1 TIC, MS File ES-API, Pos, Scan, Frag: 70



Ion 243, MSD1 243, Target Mass 242 +H Positive, EIC=242.7:243.7



Integration Results for DAD1 B, Sig=214,4 Ref=off

RetTim	Width	Area	Height	Area%	MS (+)
1.15	0.01	2.84	3.30	0.23	ND
1.79	0.02	1240.71	861.20	99.77	243

Integration Results for DAD1 C, Sig=254,4 Ref=off

RetTim	Width	Area	Height	Area%	MS (+)
1.79	0.02	927.54	744.63	99.76	243
1.97	0.01	0.89	1.09	0.10	243
2.39	0.02	1.38	0.99	0.15	243

Integration Results for MSD1 TIC, MS File

RetTim	Width	Area	Height	Area%	MS (+)
1.80	0.03	2285100.00	1014642.63	100.00	243

Ret. Time: 1.80

<<<< POSITIVE SPECTRA >>>>

ES-API Positive

