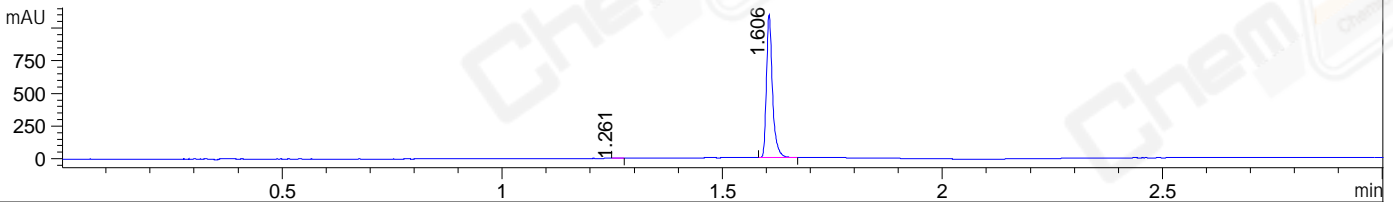
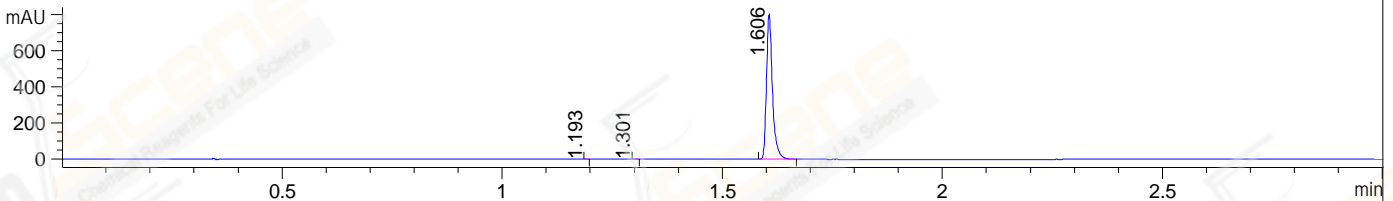


File ..\DATA\2020\20200419\930\CPK2020-416-58935.D Tgt Mass (CHM):
 Injection Date : 19 Apr 20 2:30 pm +0800 Seq. Line : 14
 Sample Name : CPK2020-416-58935 Location : P2-A-09
 Acq. Operator : ZJ_1432 Inj : 1
 Spec. Reported : MS Integration Inj Volume : 1 ul
 Acq. Method : D:\Chem32\1\data\2020\20200419\930\1-POS-3MIN.M
 Analysis Method : D:\CHEM32\1\DATA\2020\20200419\930\1-POS-3MIN.M
 CAS NO. : 1245603-92-2
 Method Info : Mobile Phase: A: water(0.01%TFA) B:ACN(0.01%TFA)
 Gradient: 5% to 95%B within 1.3 min
 Flow Rate :1.8ml/min
 Column :SunFire C18, 4.6*50mm,3.5um A-RP-607
 Oven Temperature : 45□

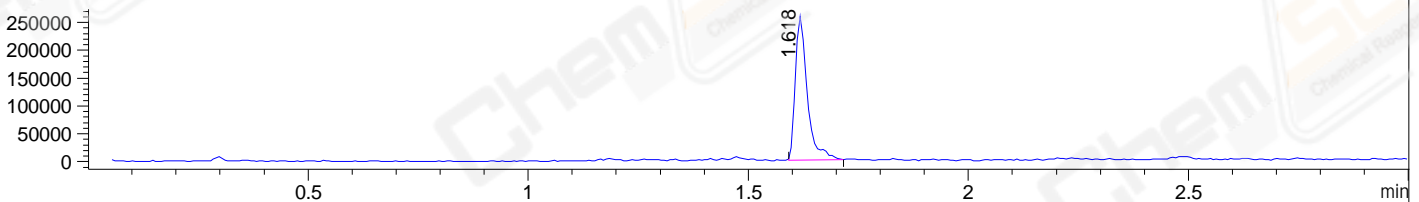
DAD1 B, Sig=214,4 Ref=off



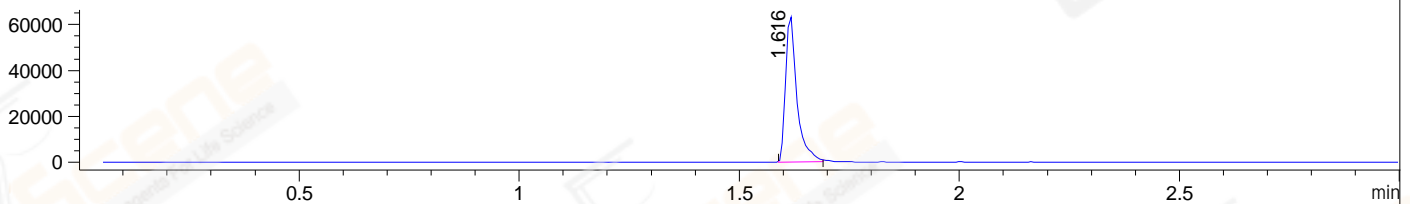
DAD1 C, Sig=254,4 Ref=off



MSD1 TIC, MS File ES-API, Pos, Scan, Frag: 70



Ion 433, MSD1 433, Target Mass 432 +H Positive, EIC=432.7:433.7



Integration Results for DAD1 B, Sig=214,4 Ref=off

RetTim	Width	Area	Height	Area%	MS(+)
1.26	0.01	2.36	3.13	0.23	ND
1.61	0.02	1042.34	1095.97	99.77	433

Integration Results for DAD1 C, Sig=254,4 Ref=off

RetTim	Width	Area	Height	Area%	MS(+)
1.19	0.01	0.09	0.29	0.01	238
1.30	0.01	0.19	0.33	0.02	ND
1.61	0.02	762.50	803.64	99.96	433

Integration Results for MSD1 TIC, MS File

RetTim	Width	Area	Height	Area%	MS(+)
1.62	0.03	481182.38	258214.34	100.00	433

Ret. Time: 1.62

<<<< POSITIVE SPECTRA >>>>

ES-API Positive

