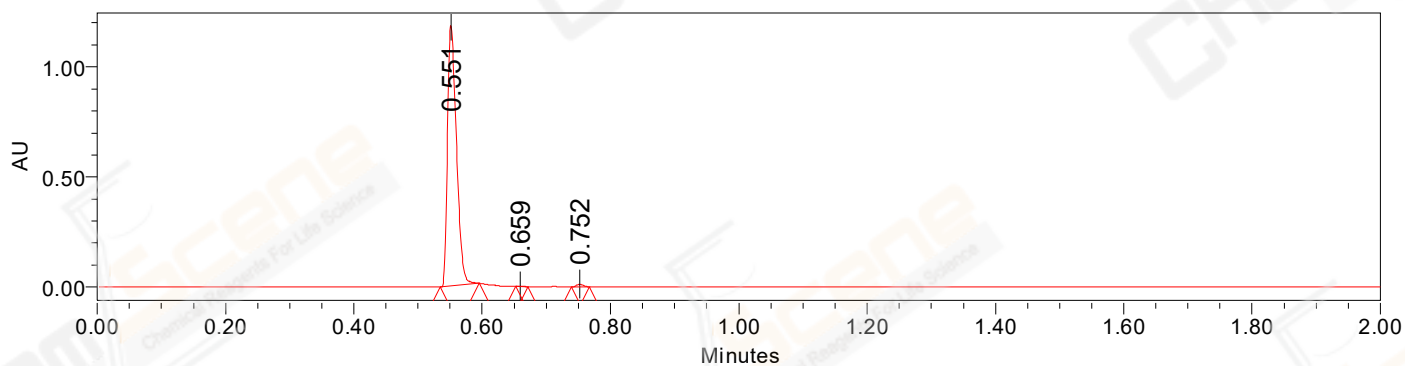


SAMPLE INFORMATION

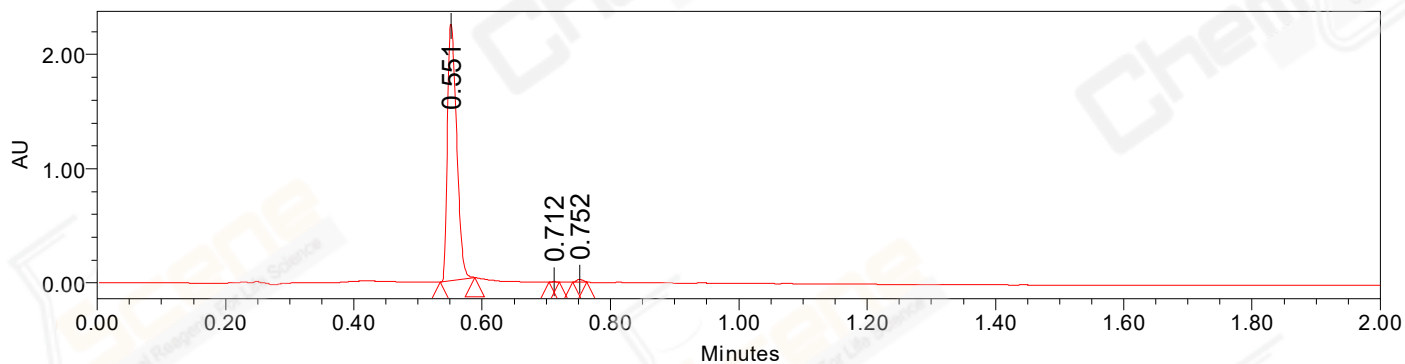
CAS NO.: 1883429-21-7
Sample information:
Vial: 2:B,5
Injection #: 1
Injection Volume: 0.50 ul
Run Time: 2.8 Minutes
Sample Set Name: 20220727

Acquired By: LY
Date Acquired: 7/27/2022 1:52:40 PM CST
Acq. Method Set: 1_POS_2MIN
Date Processed: 7/27/2022 3:15:22 PM CST,
Processing Method: PDA_01, MS_scan
Channel Name: PDA Ch1 214nm@4.8nm, MS TIC,
Column Name: A-RP-985

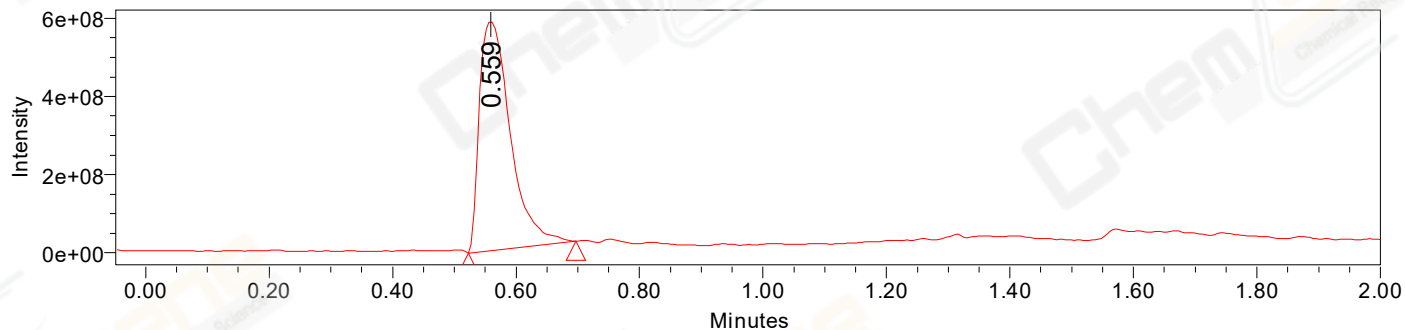
Auto-Scaled Chromatogram



Auto-Scaled Chromatogram



Auto-Scaled Chromatogram



Peak Results
Channel Name: PDA Ch2 254nm@4.8nm

	RT	Width (sec)	Area	Height	% Area	Base Peak (Combined) (m/z)	Channel Name
1	0.551	3.600	1154806	1183750	99.21	151.98	PDA Ch2 254nm@4.8nm
2	0.659	1.150	842	1363	0.07	184.64	PDA Ch2 254nm@4.8nm
3	0.752	1.700	8324	11788	0.72	327.16	PDA Ch2 254nm@4.8nm

Peak Results
Channel Name: PDA Ch1 214nm@4.8nm

	RT	Width (sec)	Area	Height	% Area	Base Peak (Combined) (m/z)	Channel Name
1	0.551	3.200	2257268	2246409	99.22	151.99	PDA Ch1 214nm@4.8nm
2	0.712	0.950	1769	3348	0.08	153.03	PDA Ch1 214nm@4.8nm
3	0.752	1.350	15903	24449	0.70	327.15	PDA Ch1 214nm@4.8nm

Peak Results
Channel Name: MS TIC

	RT	Width (sec)	Area	Height	% Area	Base Peak (Combined) (m/z)	Channel Name
1	0.559	10.446	2040580607	585678764	100.00	177.67	MS TIC

Match Plot

