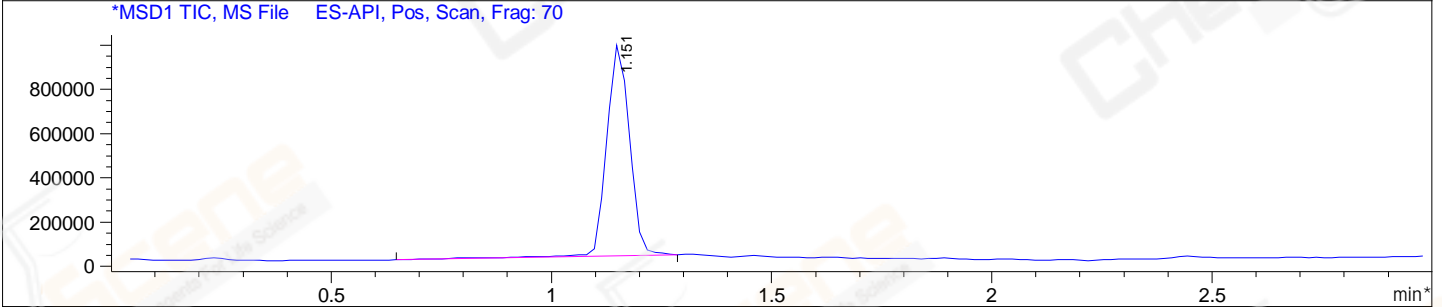
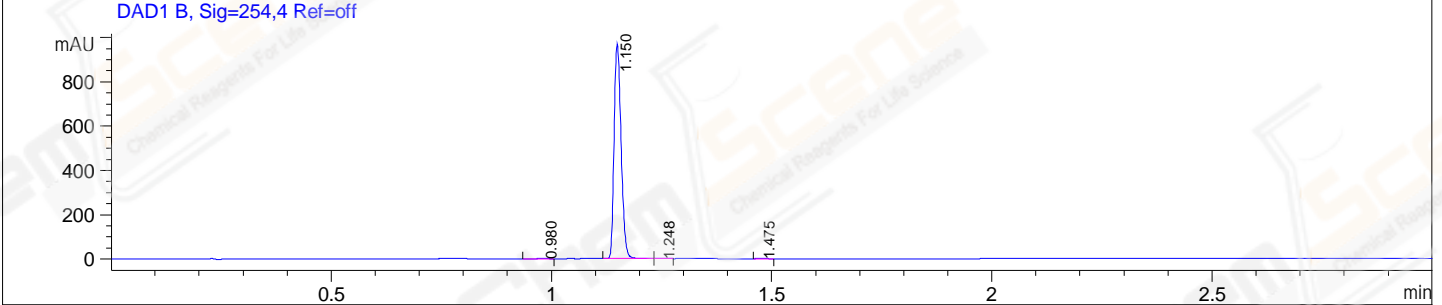
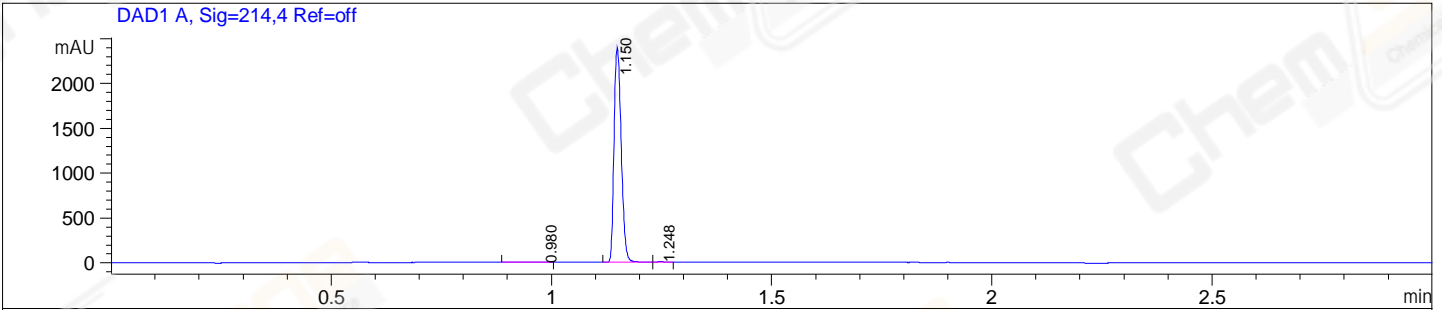


File E:\ChemStation\1\DATA\2023\2023-11\2023-11-24\CPK2023-N23-59040-UPLC-MS-10-020390.D
 Injection Date : 24-Nov-23, 08:42:18 Tgt Mass(EZX) :
 Sample Name : CPK2023-N23-59040 Location : P1-A-03
 Acq. Operator : LY_2278 Inj : 1
 Spec. Reported : MS Integration Inj Volume : 0.8 ul
 Acq. Method : E:\ChemStation\1\Methods\1-POS-UPLC3.0MIN(1.2)(150-1000).M
 Analysis Method : E:\CHEMSTATION\1\METHODS\1-POS-UPLC3.0MIN(1.2)(150-1000).M
 CAS NO. : 1698055-85-4 WalkUp method: '1-POS-3MIN' Project: CPK2023
 Method Info : Mobile Phase: A: water(0.01%TFA) B:ACN(0.01%TFA)
 Gradient: 5% to 95%B within 2.0 min
 Flow Rate :1.2ml/min
 Column :Shim-pack Scepter C18-120, 3.0*33mm,3um
 Oven Temperature : 45C



Integration Results for DAD1 A, Sig=214,4 Ref=off

RetTim	Width	Area	Height	Area%
0.98	0.02	4.71	4.79	0.17
1.15	0.02	2707.90	2386.39	99.62
1.25	0.02	5.72	5.52	0.21

Integration Results for DAD1 B, Sig=254,4 Ref=off

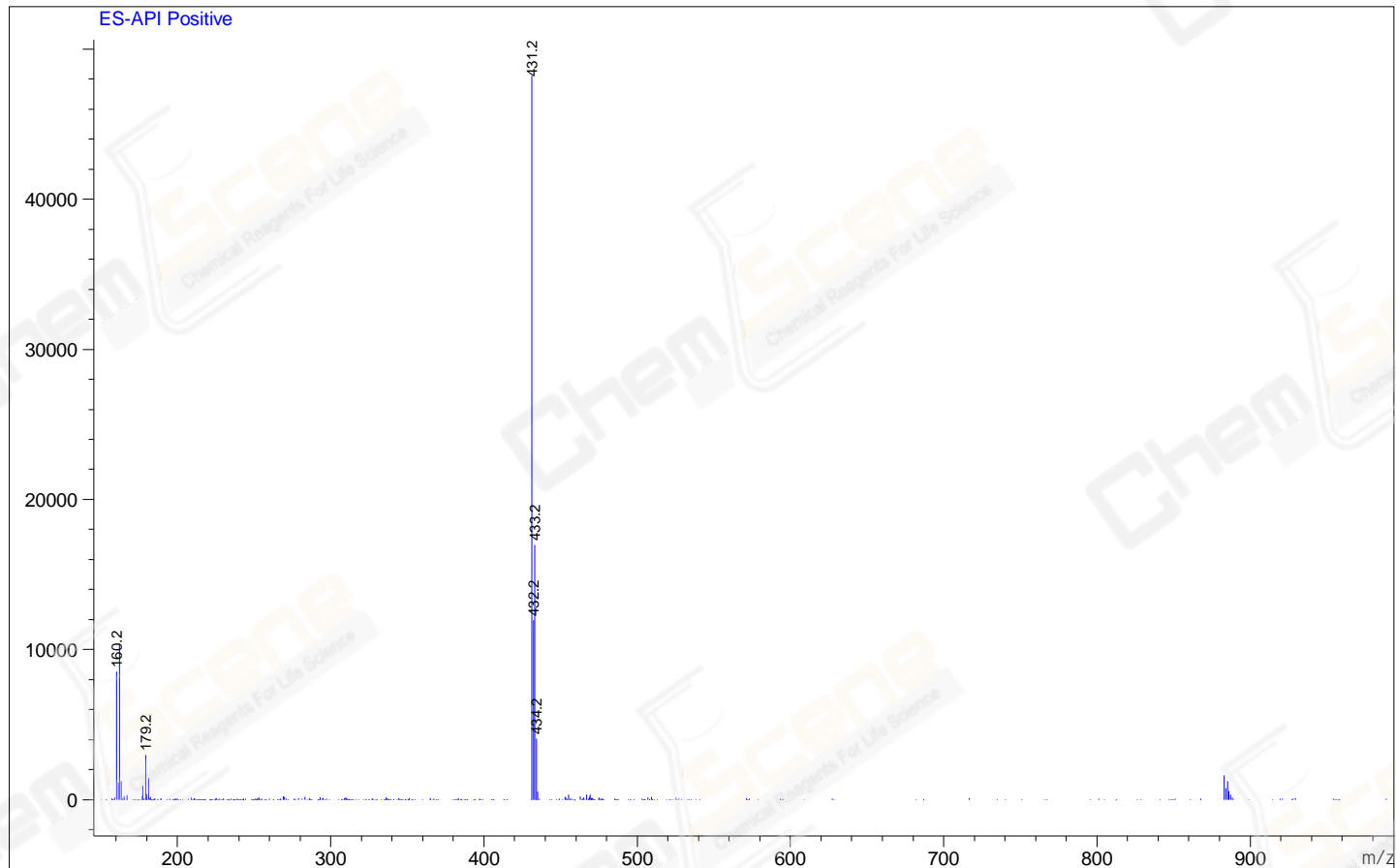
RetTim	Width	Area	Height	Area%
0.98	0.02	1.57	1.54	0.15
1.15	0.02	1069.49	966.98	99.59
1.25	0.02	1.63	1.59	0.15
1.48	0.02	1.23	1.04	0.11

Integration Results for MSD1 TIC, MS File

RetTim	Width	Area	Height	Area%
1.15	0.06	3428961.25	954351.94	100.00

Ret. Time: 1.15

<<<< POSITIVE SPECTRA >>>>



*** End of Report ***