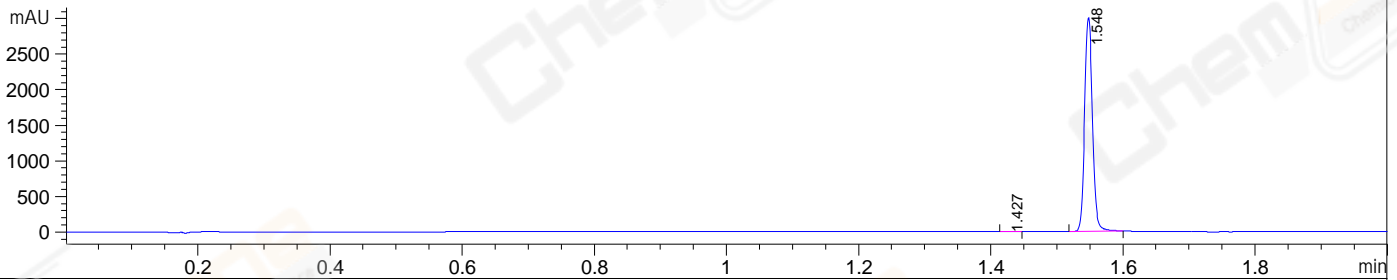
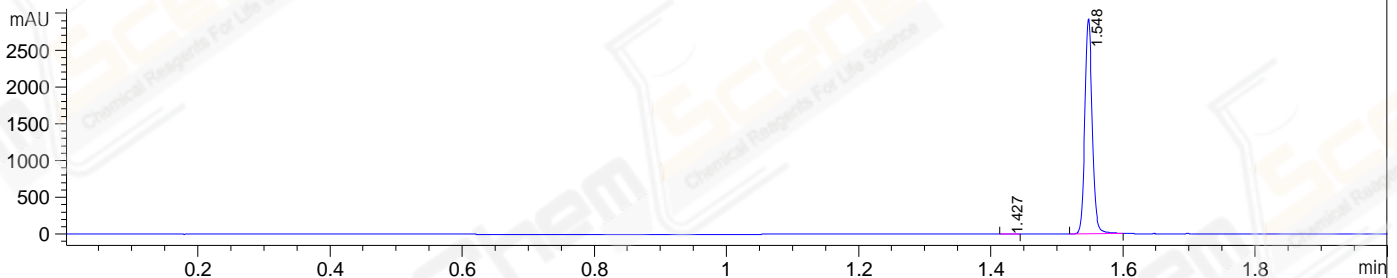


File E:\ChemStation\1\DATA\2023\2023-06\2023-06-08\CPK2023-608-59320-LCMS-20-005578.D  
 Injection Date : 08-Jun-23, 14:56:32 Tgt Mass(EZX) :  
 Sample Name : CPK2023-608-59320 Location : P1-D-06  
 Acq. Operator : LY\_2278 Inj : 1  
 Spec. Reported : MS Integration Inj Volume : 1 ul  
 Acq. Method : E:\ChemStation\1\Methods\1-POS-2MIN(1.5ML)-(150-1000).M  
 Analysis Method : E:\CHEMSTATION\1\METHODS\1-POS-2MIN(1.5ML)-(150-1000).M  
 CAS NO. : 2097938-73-1 WalkUp method: '1-POS-2MIN(150-1000)' Project: CPK2023  
 Method Info : Mobile Phase: A: water(0.01%FA) B:ACN(0.01%FA)  
 Flow Rate :1.5ml/min  
 Column :Shim-pack Scepter C18-120, 3.0\*33mm,3um  
 Oven Temperature : 45C

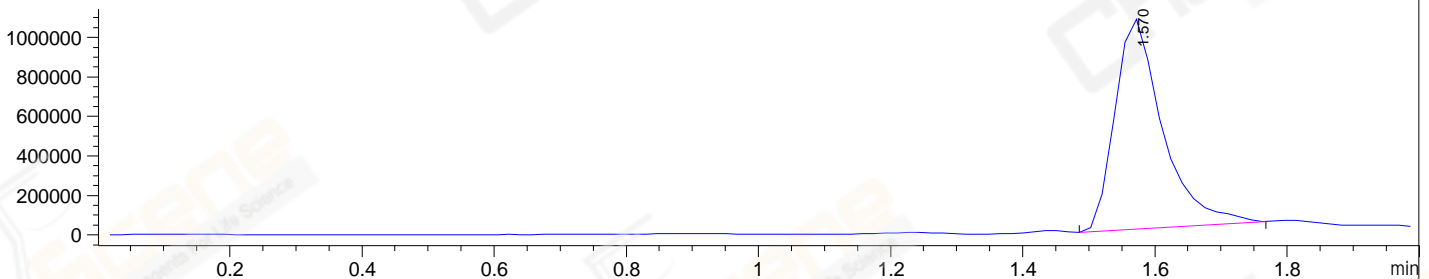
DAD1 A, Sig=214,4 Ref=off



DAD1 B, Sig=254,4 Ref=off



MSD1 TIC, MS File ES-API, Pos, Scan, Frag: 70



Integration Results for DAD1 A, Sig=214,4 Ref=off

RetTim	Width	Area	Height	Area%
1.43	0.01	3.51	5.08	0.14
1.55	0.01	2482.44	3006.89	99.86

Integration Results for DAD1 B, Sig=254,4 Ref=off

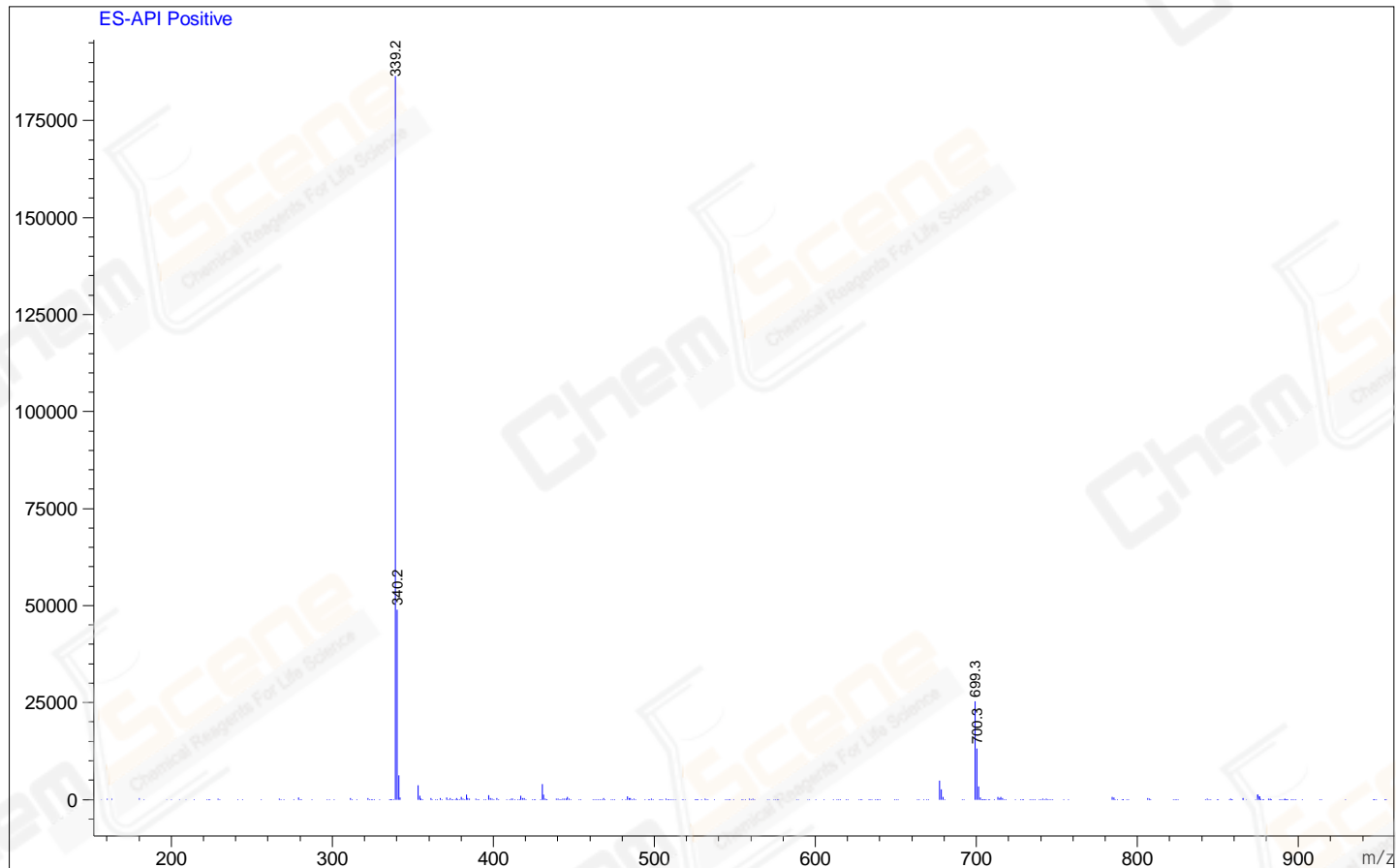
RetTim	Width	Area	Height	Area%
1.43	0.01	2.33	3.25	0.10
1.55	0.01	2270.11	2923.04	99.90

Integration Results for MSD1 TIC, MS File

RetTim	Width	Area	Height	Area%
1.57	0.07	5300302.00	1063629.13	100.00

Ret. Time: 1.57

<<<< POSITIVE SPECTRA >>>>



\*\*\* End of Report \*\*\*