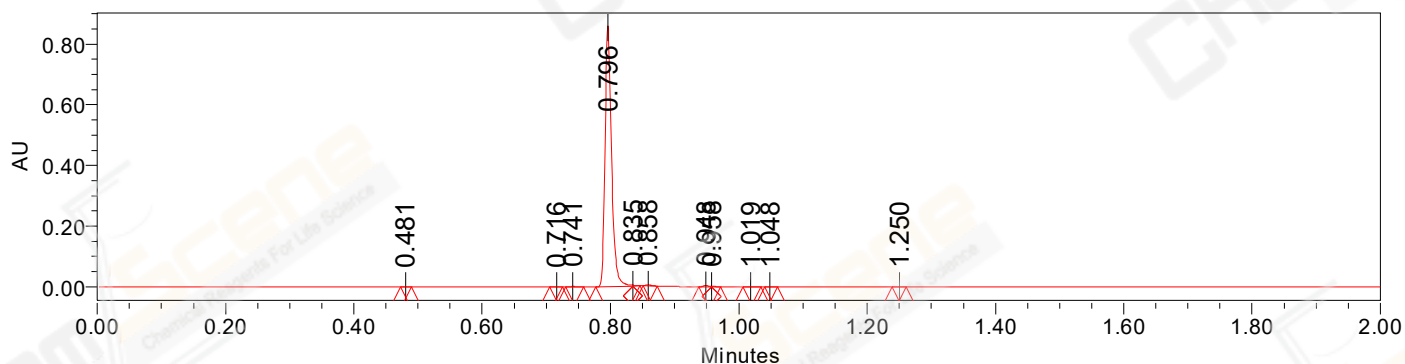


SAMPLE INFORMATION

Sample Name: CPK2022-O17
CAS NO.: 1848959-11-4
Vial: 1:E,4
Injection #: 1
Injection Volume: 0.30 ul
Run Time: 2.8 Minutes
Sample Set Name: 20221017

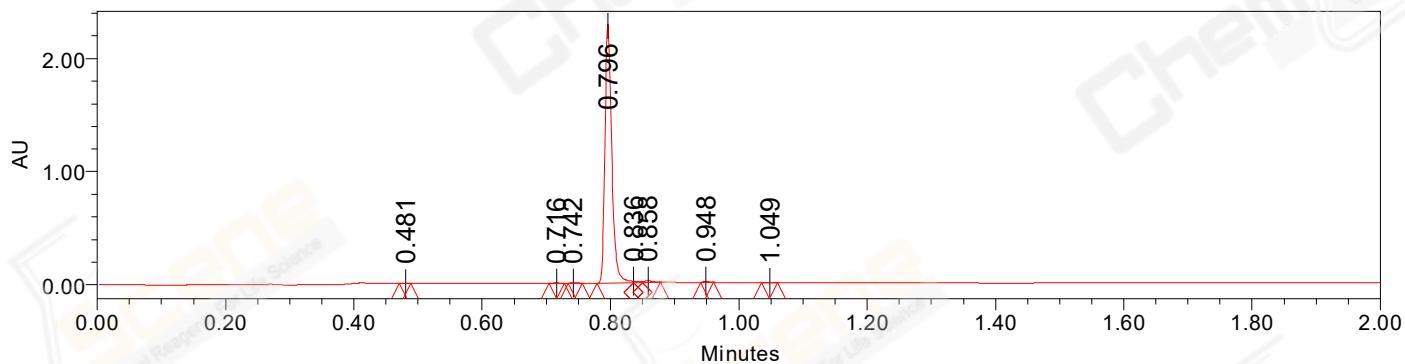
Acquired By: LY
Date Acquired: 10/17/2022 4:41:28 PM CST
Acq. Method Set: 1_POS_2MIN
Date Processed: 10/18/2022 10:14:27 AM CST,
Processing Method: PDA_01, MS_scan
Channel Name: PDA Ch1 214nm@4.8nm, MS TIC,
Column Name: A-RP-985

Auto-Scaled Chromatogram



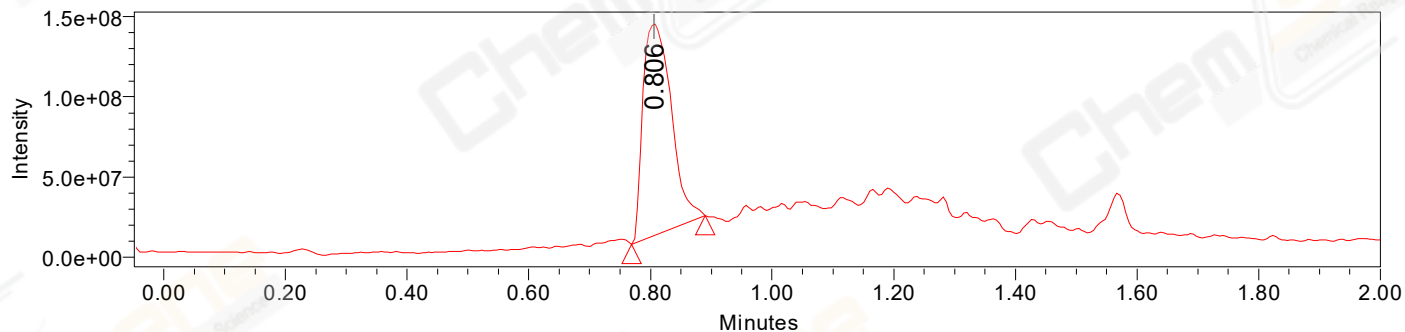
Processed Channel Descr. PDA Ch2 254nm@4.8nm

Auto-Scaled Chromatogram



Processed Channel Descr. PDA Ch1 214nm@4.8nm

Auto-Scaled Chromatogram



Processed Channel Descr. ACQ-SQD2 1: MS Scan MS TIC, Smoothed by 9 point Savitzky-Golay Filter., Time offset by -0.053 mins. (1: 150.00-1000.00 ES+, Centroid, CV=30)

Peak Results
Channel Name: PDA Ch2 254nm@4.8nm

	RT	Width (sec)	Area	Height	% Area	Base Peak (Combined) (m/z)	Channel Name
1	0.481	1.050	290	525	0.05	152.03	PDA Ch2 254nm@4.8nm
2	0.716	1.200	1005	1787	0.16	151.95	PDA Ch2 254nm@4.8nm
3	0.741	1.700	1780	2224	0.29	153.08	PDA Ch2 254nm@4.8nm
4	0.796	3.500	610625	860281	98.37	151.98	PDA Ch2 254nm@4.8nm
5	0.835	0.650	799	2275	0.13	152.00	PDA Ch2 254nm@4.8nm
6	0.858	1.300	1680	2635	0.27	507.14	PDA Ch2 254nm@4.8nm
7	0.948	1.200	2431	3851	0.39	513.97	PDA Ch2 254nm@4.8nm
8	0.958	0.850	573	1128	0.09	152.12	PDA Ch2 254nm@4.8nm
9	1.019	1.650	398	489	0.06	563.17	PDA Ch2 254nm@4.8nm
10	1.048	1.200	523	875	0.08	152.00	PDA Ch2 254nm@4.8nm
11	1.250	1.300	624	999	0.10	152.95	PDA Ch2 254nm@4.8nm

Peak Results
Channel Name: PDA Ch1 214nm@4.8nm

	RT	Width (sec)	Area	Height	% Area	Base Peak (Combined) (m/z)	Channel Name
1	0.481	1.100	913	1713	0.05	152.99	PDA Ch1 214nm@4.8nm
2	0.716	1.450	2189	3605	0.13	151.94	PDA Ch1 214nm@4.8nm
3	0.742	1.300	2438	3379	0.14	235.20	PDA Ch1 214nm@4.8nm
4	0.796	3.400	1703817	2289759	98.12	153.12	PDA Ch1 214nm@4.8nm
5	0.836	0.850	7558	12361	0.44	507.14	PDA Ch1 214nm@4.8nm
6	0.858	1.650	11685	13321	0.67	507.14	PDA Ch1 214nm@4.8nm
7	0.948	1.250	5804	10371	0.33	151.03	PDA Ch1 214nm@4.8nm
8	1.049	1.550	1978	3103	0.11	152.01	PDA Ch1 214nm@4.8nm

Peak Results
Channel Name: MS TIC

	RT	Width (sec)	Area	Height	% Area	Base Peak (Combined) (m/z)	Channel Name
1	0.806	7.254	425998315	132070656	100.00	507.14	MS TIC

Match Plot

