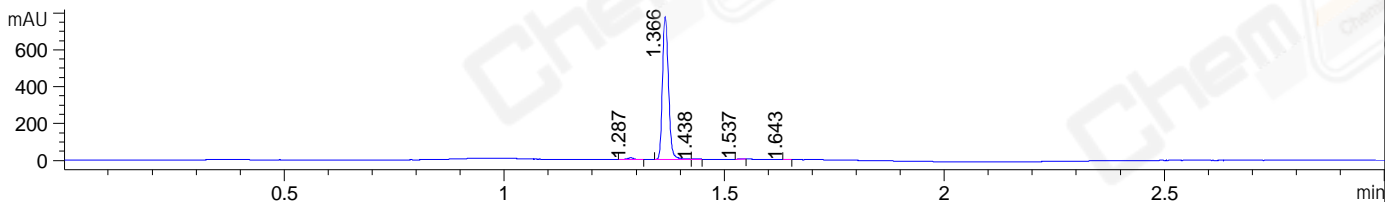
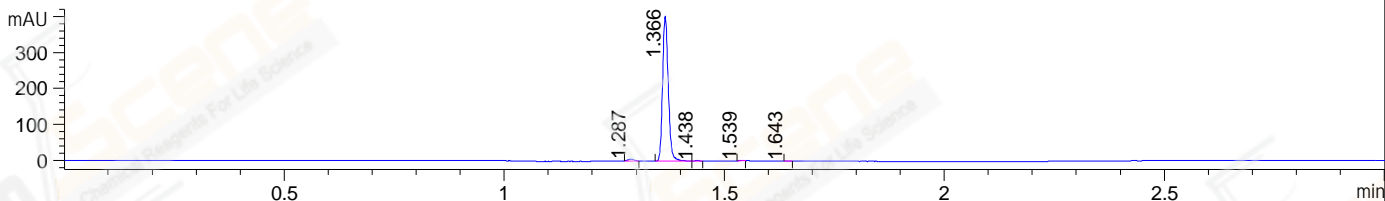


File ..1\DATA\2020\20200220\842\BIZ2020-220-CXL4.D Tgt Mass (CHM):
 Injection Date : 20 Feb 20 5:29 pm +0800 Seq. Line : 109
 Sample Name : BIZ2020-220-CXL4 Location : P1-D-06
 Acq. Operator : ZJ_1432 Inj : 1
 Spec. Reported : MS Integration Inj Volume : 0.5 ul
 Acq. Method : D:\Chem32\1\data\2020\20200220\842\1-POS-3MIN.M
 Analysis Method : D:\CHEM32\1\DATA\2020\20200220\842\1-POS-3MIN.M
 Catalog No : CS-0095953
 Method Info : Mobile Phase: A: water(0.01%TFA) B:ACN(0.01%TFA)
 Gradient: 5% to 95%B within 1.3 min
 Flow Rate :1.8ml/min
 Column :SunFire C18, 4.6*50mm,3.5um A-RP-433
 Oven Temperature : 45□

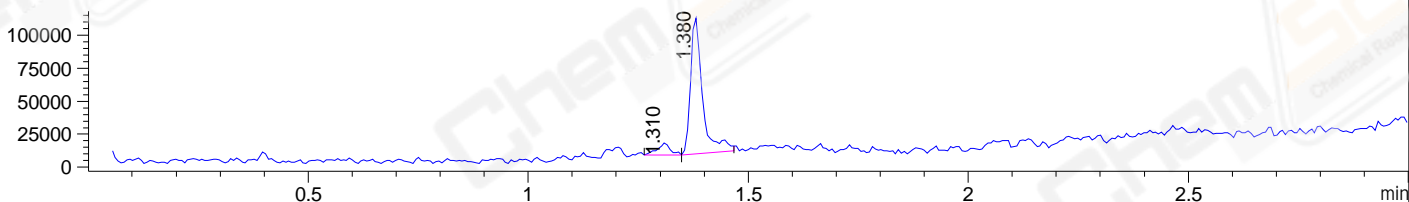
DAD1 B, Sig=214,4 Ref=off



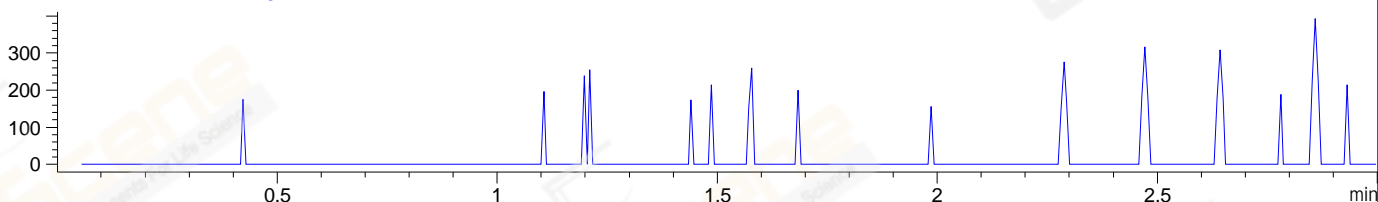
DAD1 C, Sig=254,4 Ref=off



MSD1 TIC, MS File ES-API, Pos, Scan, Frag: 70



Ion 543, MSD1 543, Target Mass 542 +H Positive, EIC=542.7:543.7



Integration Results for DAD1 B, Sig=214,4 Ref=off

RetTim	Width	Area	Height	Area%	MS (+)
1.29	0.02	10.10	9.70	1.34	509
1.37	0.02	740.56	776.25	98.01	507
1.44	0.01	1.53	2.14	0.20	507
1.54	0.01	2.56	3.46	0.34	563
1.64	0.01	0.87	1.58	0.12	ND

Integration Results for DAD1 C, Sig=254,4 Ref=off

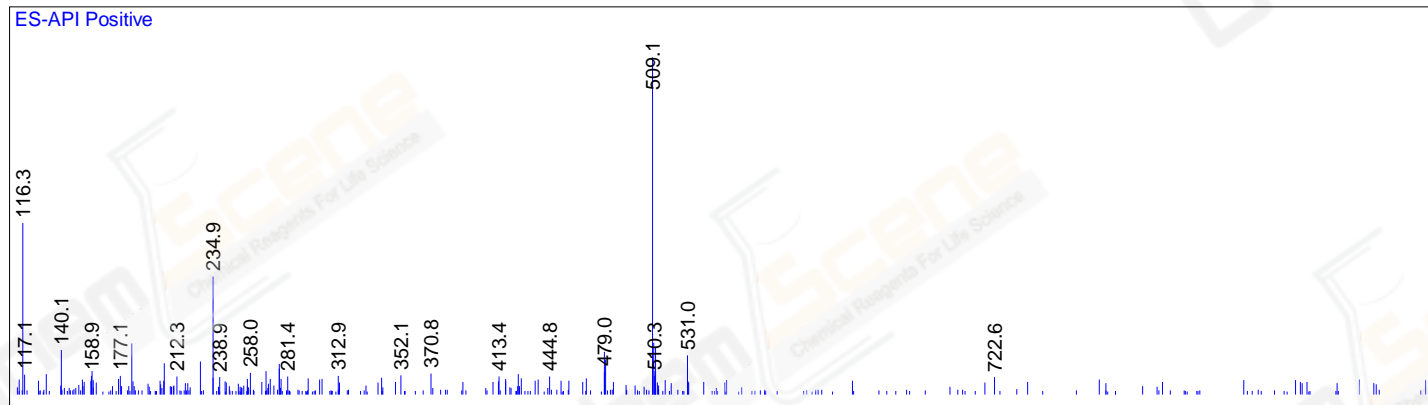
RetTim	Width	Area	Height	Area%	MS (+)
1.29	0.01	4.33	5.27	1.17	509
1.37	0.02	364.58	404.40	98.28	507
1.44	0.01	1.14	1.31	0.31	507
1.54	0.01	0.57	1.00	0.15	ND
1.64	0.01	0.36	0.54	0.10	591

Integration Results for MSD1 TIC, MS File

RetTim	Width	Area	Height	Area%	MS (+)
--------	-------	------	--------	-------	--------

1.31	0.04	19147.74	9208.19	8.92	509
1.38	0.03	195477.02	103782.38	91.08	507

Ret. Time: 1.31 <<<< POSITIVE SPECTRA >>>>



Ret. Time: 1.38

