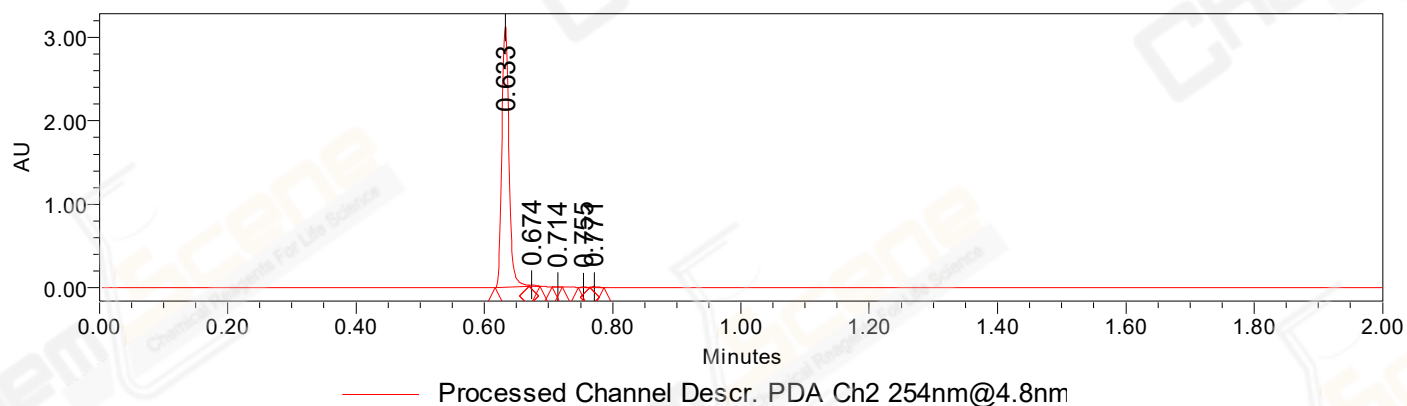


## SAMPLE INFORMATION

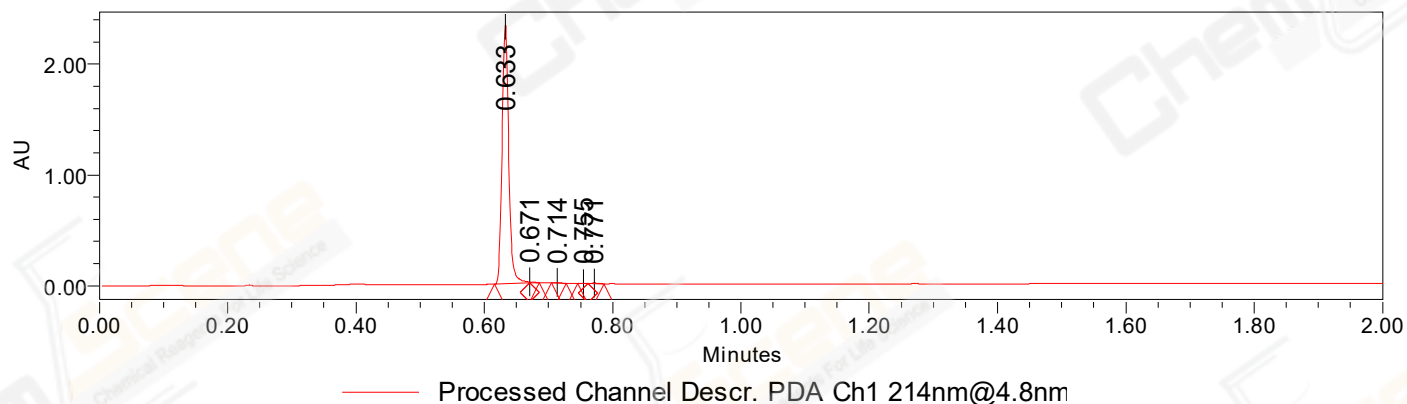
CAS NO.: 779353-01-4  
Sample information: 2:E,6  
Vial: 1  
Injection #: 1  
Injection Volume: 0.30 ul  
Run Time: 2.8 Minutes  
Sample Set Name: 20221103

Acquired By: LY  
Date Acquired: 11/3/2022 6:03:54 PM CST  
Acq. Method Set: 1\_POS\_2MIN  
Date Processed: 11/4/2022 9:51:30 AM CST,  
Processing Method: PDA\_01, MS\_scan  
Channel Name: PDA Ch1 214nm@4.8nm, MS TIC,  
Column Name: A-RP-985

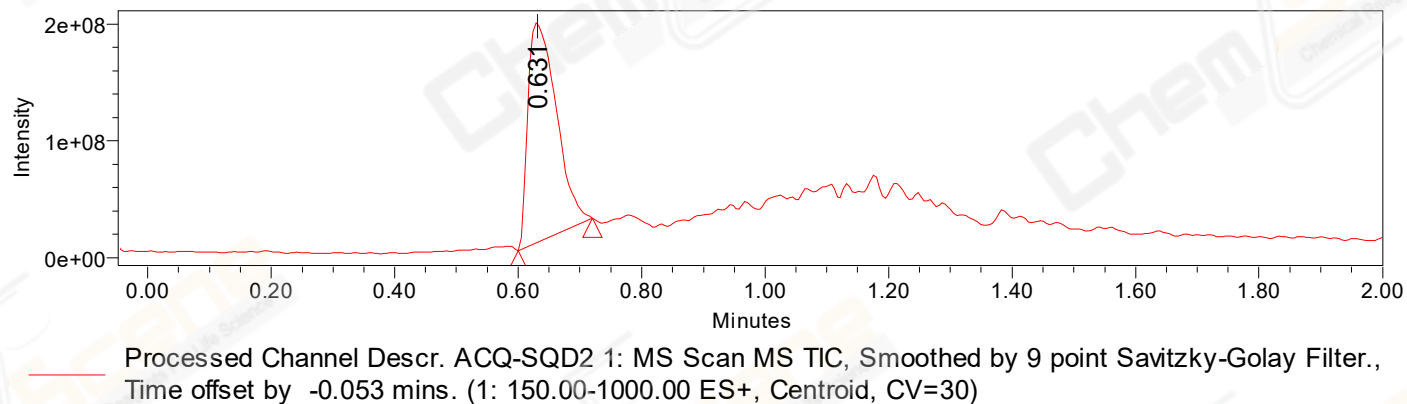
### Auto-Scaled Chromatogram



### Auto-Scaled Chromatogram



### Auto-Scaled Chromatogram



Peak Results  
Channel Name: PDA Ch2 254nm@4.8nm

	RT	Width (sec)	Area	Height	% Area	Base Peak (Combined) (m/z)	Channel Name
1	0.633	3.150	2429352	3128568	99.14	151.95	PDA Ch2 254nm@4.8nm
2	0.674	1.050	12961	20404	0.53	397.21	PDA Ch2 254nm@4.8nm
3	0.714	0.950	933	1946	0.04	397.21	PDA Ch2 254nm@4.8nm
4	0.755	1.050	974	1879	0.04	151.83	PDA Ch2 254nm@4.8nm
5	0.771	1.350	6238	10800	0.25	304.12	PDA Ch2 254nm@4.8nm

Peak Results  
Channel Name: PDA Ch1 214nm@4.8nm

	RT	Width (sec)	Area	Height	% Area	Base Peak (Combined) (m/z)	Channel Name
1	0.633	3.300	1693884	2342989	99.17	151.96	PDA Ch1 214nm@4.8nm
2	0.671	0.900	5160	10596	0.30	397.21	PDA Ch1 214nm@4.8nm
3	0.714	1.350	4006	7244	0.23	397.21	PDA Ch1 214nm@4.8nm
4	0.755	0.950	1166	2267	0.07	304.11	PDA Ch1 214nm@4.8nm
5	0.771	1.500	3928	6396	0.23	304.12	PDA Ch1 214nm@4.8nm

Peak Results  
Channel Name: MS TIC

	RT	Width (sec)	Area	Height	% Area	Base Peak (Combined) (m/z)	Channel Name
1	0.631	7.254	601581966	190007479	100.00	397.21	MS TIC

Match Plot

