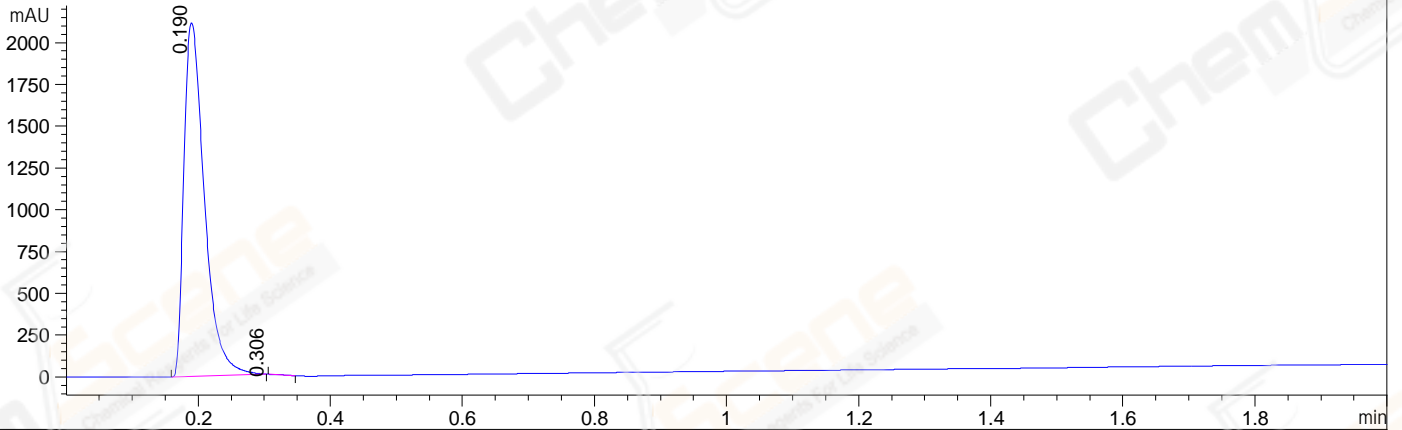
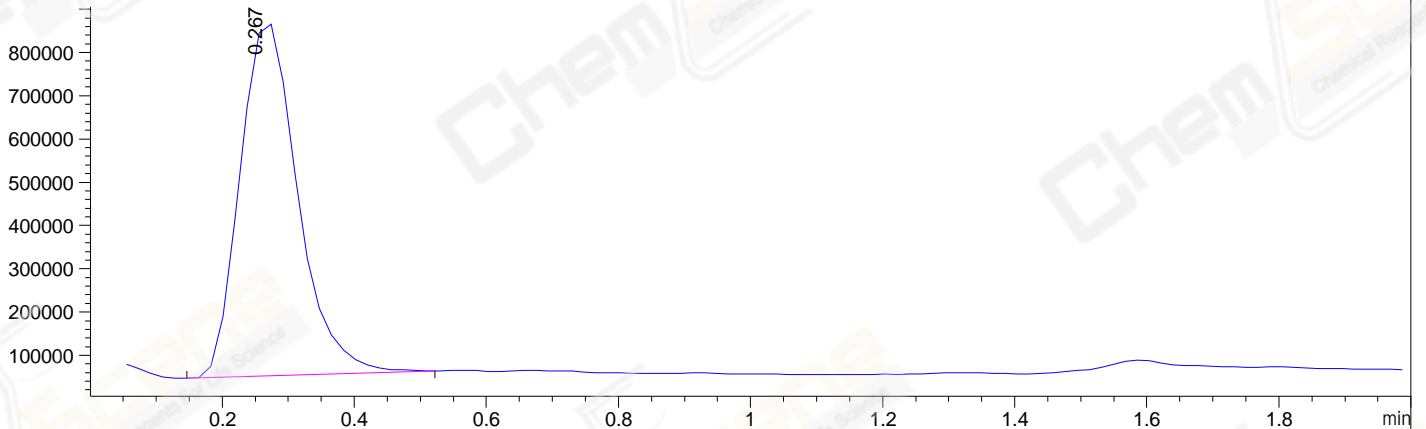


File ..-11-04\BIZ2024-N04-SCH9-UPLC-MS-06-066871.D Tgt Mass (EZ):  
 Injection Date : 04-Nov-24, 17:39:54 Seq. Line : 0  
 Sample Name : BIZ2024-N04-SCH9 Location :  
 Acq. Operator : LY\_2287 Inj : 1  
 Spec. Reported : MS Integration Inj Volume : 1 ul  
 Acq. Method : D:\software\method\Methods\1-NEG-UPLC2.0MIN(0.8ML).M  
 Analysis Method : D:\SOFTWARE\METHOD\METHODS\1-NEG-UPLC2.0MIN(0.8ML).M  
 CAS NO. : 106627-54-7 WalkUp method: '1-NEG-2MIN' Project: BIZ2024  
 Method Info : Mobile Phase: A: water(0.01%FA) B:ACN(0.01%FA)  
 Gradient: 5% to 95%B within 0.6 min  
 Flow Rate : 0.8ml/min  
 Column : Poroshell 120 EC- C18, 2.1\*50mm,1.9um  
 Oven Temperature : 45C

DAD1 A, Sig=214,4 Ref=off



MSD1 TIC, MS File ES-API, Neg, Scan, Frag: 70



Integration Results for DAD1 A, Sig=214,4 Ref=off

RetTim	Width	Area	Height	Area%	MS(-)
0.19	0.04	4563.45	2116.82	99.94	194
0.31	0.03	2.87	0.23	0.06	194

Integration Results for MSD1 TIC, MS File

RetTim	Width	Area	Height	Area%	MS(-)
0.27	0.09	4962040.50	823345.25	100.00	194

Ret. Time: 0.27

<<<< NEGATIVE SPECTRA >>>>

