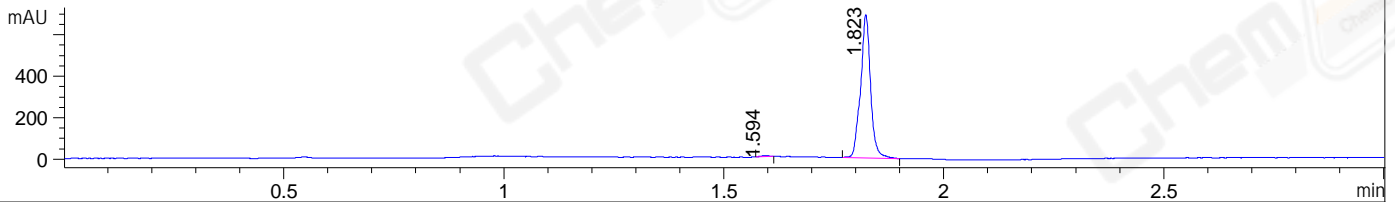
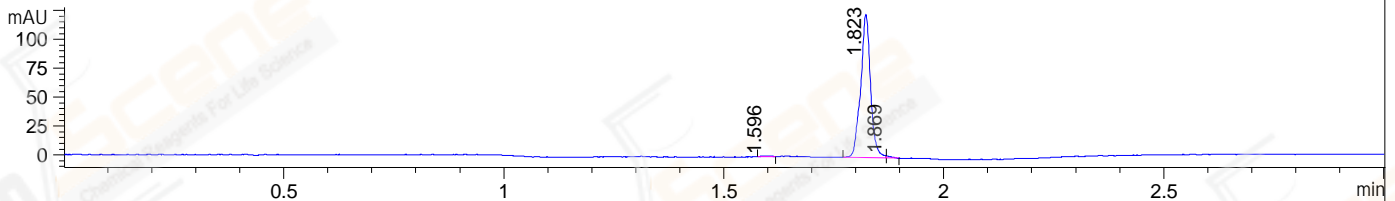


File ..\DATA\2020\20200328\898\BIZ2020-327-CXL6.D Tgt Mass (CHM):
 Injection Date : 28 Mar 20 1:41 pm +0800 Seq. Line : 50
 Sample Name : BIZ2020-327-CXL6 Location : P1-A-06
 Acq. Operator : ZJ_1432 Inj : 1
 Spec. Reported : MS Integration Inj Volume : 0.7 ul
 Acq. Method : D:\Chem32\1\data\2020\20200328\898\1-POS-3MIN.M
 Analysis Method : D:\CHEM32\1\DATA\2020\20200328\898\1-POS-3MIN.M
 Catalog No : CS-5427 Batch# 61986
 Method Info : Mobile Phase: A: water(0.01%TFA) B:ACN(0.01%TFA)
 Gradient: 5% to 95%B within 1.3 min
 Flow Rate :1.8ml/min
 Column :SunFire C18, 4.6*50mm,3.5um A-RP-433
 Oven Temperature : 45□

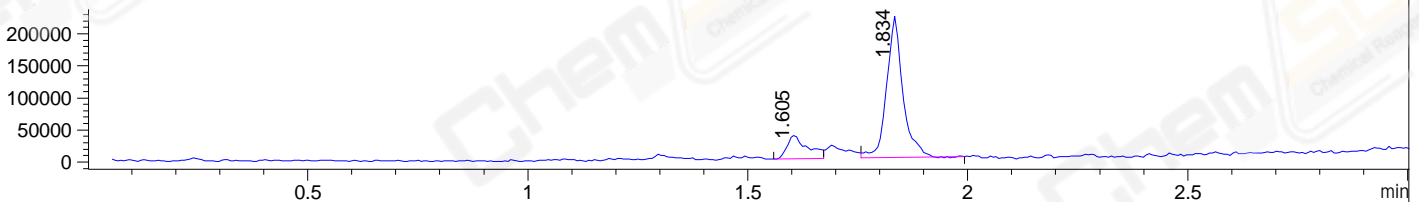
DAD1 B, Sig=214,4 Ref=off



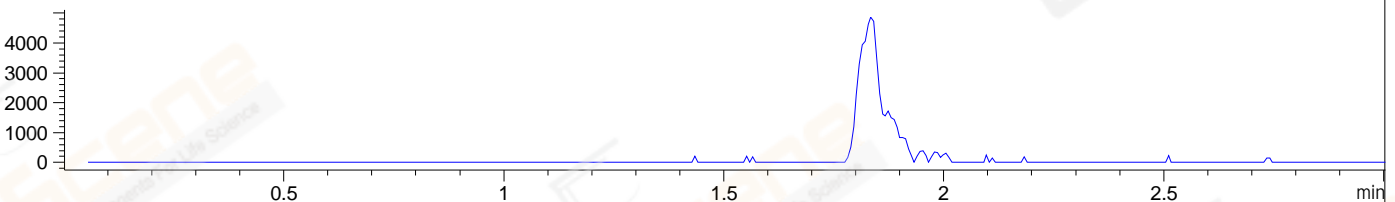
DAD1 C, Sig=254,4 Ref=off



MSD1 TIC, MS File ES-API, Pos, Scan, Frag: 70



Ion 427, MSD1 427, Target Mass 426 +H Positive, EIC=426.7:427.7



Integration Results for DAD1 B, Sig=214,4 Ref=off

RetTim	Width	Area	Height	Area%	MS (+)
1.59	0.02	7.38	6.51	0.67	174
1.82	0.03	1090.69	691.39	99.33	387

Integration Results for DAD1 C, Sig=254,4 Ref=off

RetTim	Width	Area	Height	Area%	MS (+)
1.60	0.02	0.82	0.65	0.42	174
1.82	0.03	192.94	123.91	99.01	387
1.87	0.01	1.11	1.75	0.57	387

Integration Results for MSD1 TIC, MS File

RetTim	Width	Area	Height	Area%	MS (+)
1.61	0.04	119018.24	36898.62	17.42	174
1.83	0.04	564148.13	220375.30	82.58	387

Ret. Time: 1.61

<<<< POSITIVE SPECTRA >>>>

ES-API Positive



Ret. Time: 1.83

ES-API Positive

