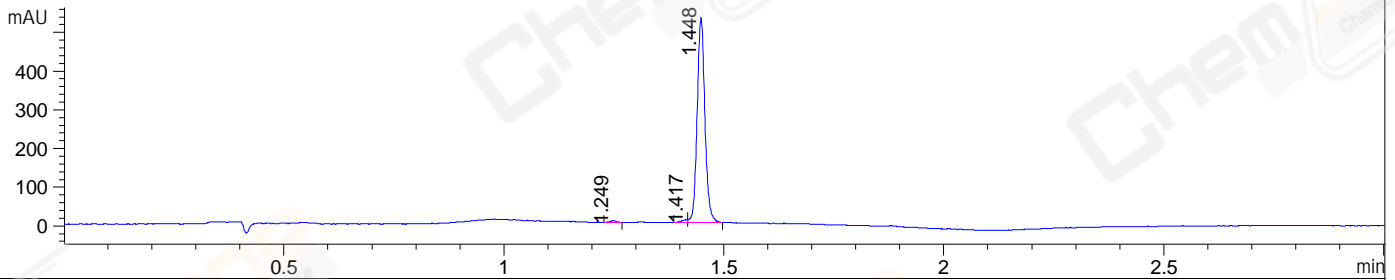
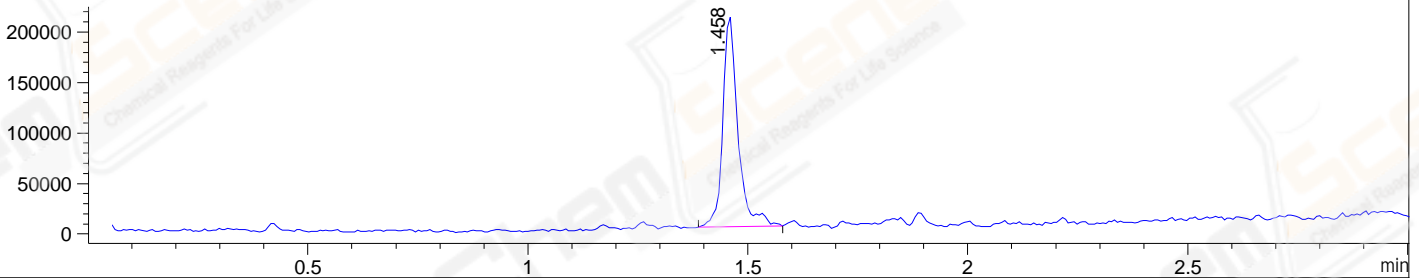


File ..\DATA\2020\20200327\897\BIZ2020-326-SCH5-.D Tgt Mass (CHM):  
 Injection Date : 27 Mar 20 2:36 pm +0800 Seq. Line : 71  
 Sample Name : BIZ2020-326-SCH5 Location : P1-D-06  
 Acq. Operator : ZJ\_1432 Inj : 1  
 Spec. Reported : MS Integration Inj Volume : 2 ul  
 Acq. Method : D:\Chem32\1\data\2020\20200327\897\1-POS-3MIN.M  
 Analysis Method : D:\CHEM32\1\DATA\2020\20200327\897\1-POS-3MIN.M  
 Catalog No : CS-0039416 Batch#62308  
 Method Info : Mobile Phase: A: water(0.01%TFA) B:ACN(0.01%TFA)  
 Gradient: 5% to 95%B within 1.3 min  
 Flow Rate :1.8ml/min  
 Column :SunFire C18, 4.6\*50mm,3.5um A-RP-433  
 Oven Temperature : 45□

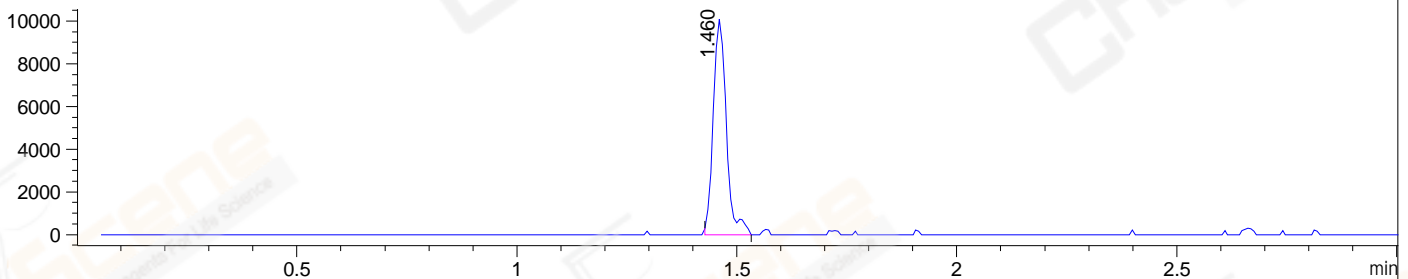
DAD1 B, Sig=214,4 Ref=off



MSD1 TIC, MS File ES-API, Pos, Scan, Frag: 70



Ion 437, MSD1 437, Target Mass 436 +H Positive, EIC=436.7:437.7



Integration Results for DAD1 B, Sig=214,4 Ref=off

RetTim	Width	Area	Height	Area%	MS (+)
1.25	0.02	4.59	4.51	0.70	ND
1.42	0.01	6.53	7.40	0.99	ND
1.45	0.02	646.83	528.59	98.31	381

Integration Results for MSD1 TIC, MS File

RetTim	Width	Area	Height	Area%	MS (+)
1.46	0.04	500776.25	209844.59	100.00	381

Ret. Time: 1.46

<<<< POSITIVE SPECTRA >>>>

ES-API Positive

