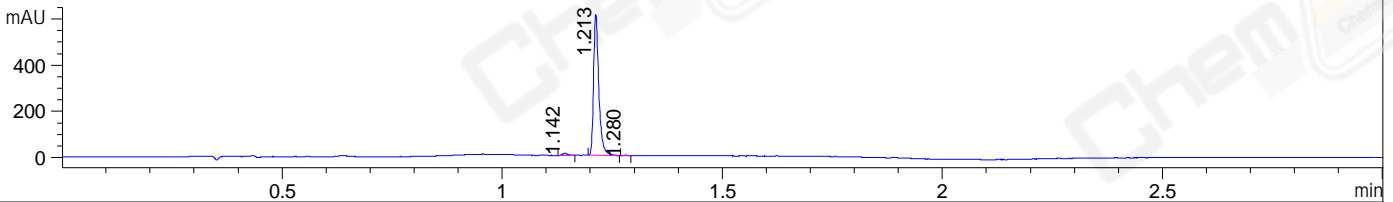
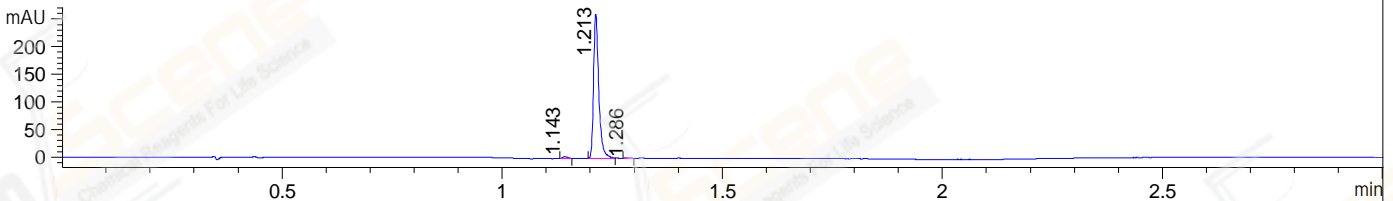


File ..1\DATA\2020\20200413\922\BIZ2020-409-WMX4.D Tgt Mass (CHM):
Injection Date : 13 Apr 20 11:08 am +0800 Seq. Line : 25
Sample Name : BIZ2020-409-WMX4 Location : P1-A-02
Acq. Operator : ZJ_1432 Inj : 1
Spec. Reported : MS Integration Inj Volume : 1 ul
Acq. Method : D:\Chem32\1\data\2020\20200413\922\1-POS-3MIN.M
Analysis Method : D:\CHEM32\1\DATA\2020\20200413\922\1-POS-3MIN.M
CAS NO. : 1234015-54-3
Method Info : Mobile Phase: A: water(0.01%TFA) B:ACN(0.01%TFA)
Gradient: 5% to 95%B within 1.3 min
Flow Rate :1.8ml/min
Column :SunFire C18, 4.6*50mm,3.5um A-RP-433
Oven Temperature : 45□

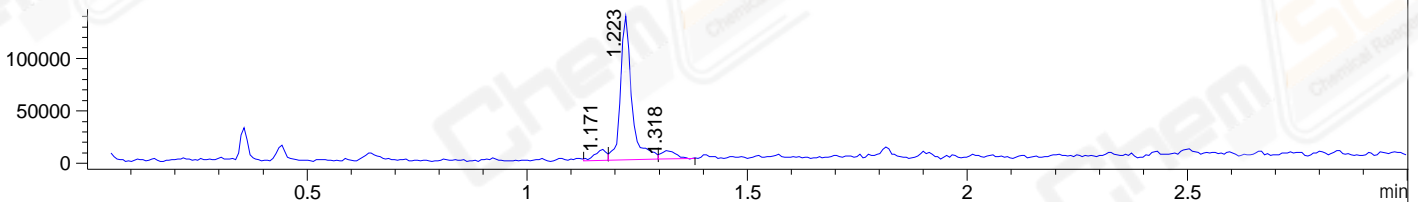
DAD1 B, Sig=214,4 Ref=off



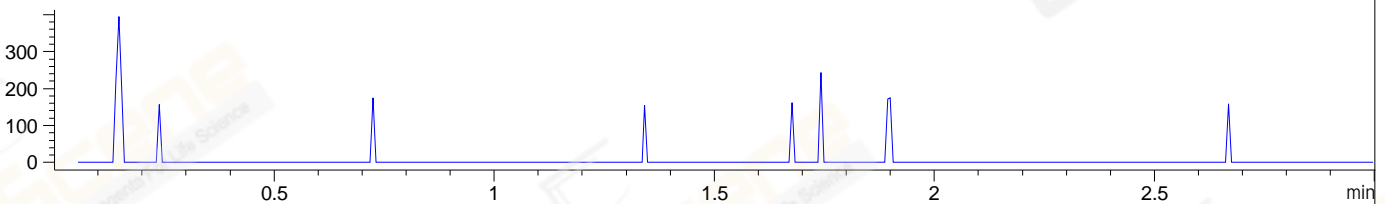
DAD1 C, Sig=254,4 Ref=off



MSD1 TIC, MS File ES-API, Pos, Scan, Frag: 70



Ion 438, MSD1 438, Target Mass 437 +H Positive, EIC=437.7:438.7



Integration Results for DAD1 B, Sig=214,4 Ref=off

RetTim	Width	Area	Height	Area%	MS (+)
1.14	0.01	8.11	9.41	1.57	361
1.21	0.01	509.36	612.91	98.33	366
1.28	0.01	0.53	1.21	0.10	302

Integration Results for DAD1 C, Sig=254,4 Ref=off

RetTim	Width	Area	Height	Area%	MS (+)
1.14	0.01	2.62	3.35	1.20	ND
1.21	0.01	215.64	261.64	98.35	366
1.29	0.02	1.00	1.00	0.45	302

Integration Results for MSD1 TIC, MS File

RetTim	Width	Area	Height	Area%	MS (+)
1.17	0.02	18452.29	10532.80	6.61	361
1.22	0.03	242292.78	136913.61	86.85	366
1.32	0.04	18239.69	8217.26	6.54	ND

Ret. Time: 1.17

<<<< POSITIVE SPECTRA >>>>

ES-API Positive



Ret. Time: 1.22

ES-API Positive

