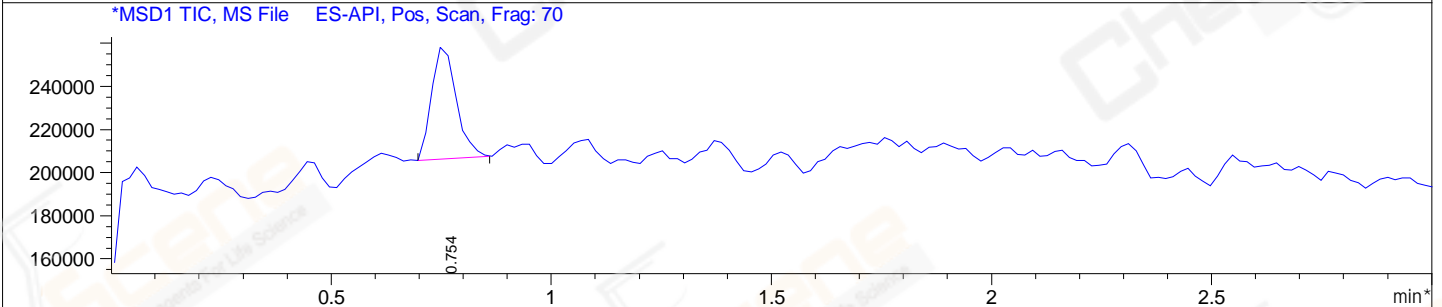
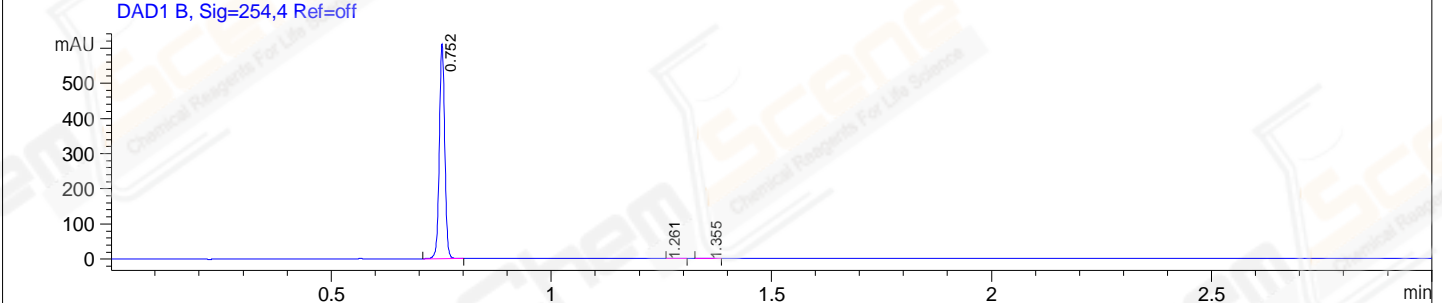
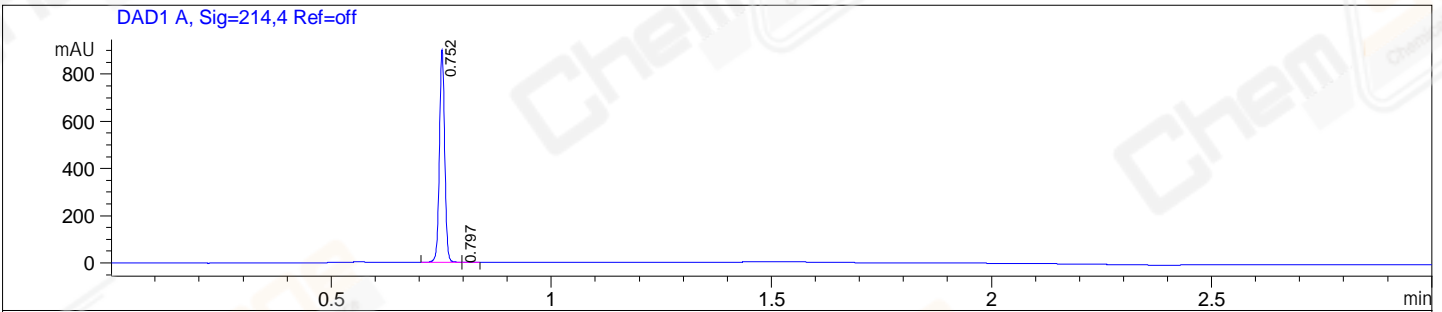


File E:\ChemStation\1\DATA\2023\2023-06\2023-06-28\CPK2023-627-63161-UPLC-MS-10-006638.D  
 Injection Date : 28-Jun-23, 11:25:04 Tgt Mass(EZX) :  
 Sample Name : CPK2023-627-63161 Location : P1-D-01  
 Acq. Operator : LY\_2278 Inj : 1  
 Spec. Reported : MS Integration Inj Volume : 0.2 ul  
 Acq. Method : E:\ChemStation\1\Methods\1-POS-UPLC3.0MIN(1.2)(0-2000).M  
 Analysis Method : E:\CHEMSTATION\1\METHODS\1-POS-UPLC3.0MIN(1.2)(0-2000).M  
 CAS NO. : 1670-87-7 WalkUp method: '1-POS-3MIN(0-2000)' Project: CPK2023  
 Method Info : Mobile Phase: A: water(0.01%TFA) B:ACN(0.01%TFA)  
 Gradient: 5% to 95%B within 2.0 min  
 Flow Rate :1.2ml/min  
 Column :Shim-pack Scepter C18-120, 3.0\*33mm,3um  
 Oven Temperature : 45C



Integration Results for DAD1 A, Sig=214,4 Ref=off

RetTim	Width	Area	Height	Area%
0.75	0.01	746.89	903.89	99.91
0.80	0.02	0.71	0.63	0.09

Integration Results for DAD1 B, Sig=254,4 Ref=off

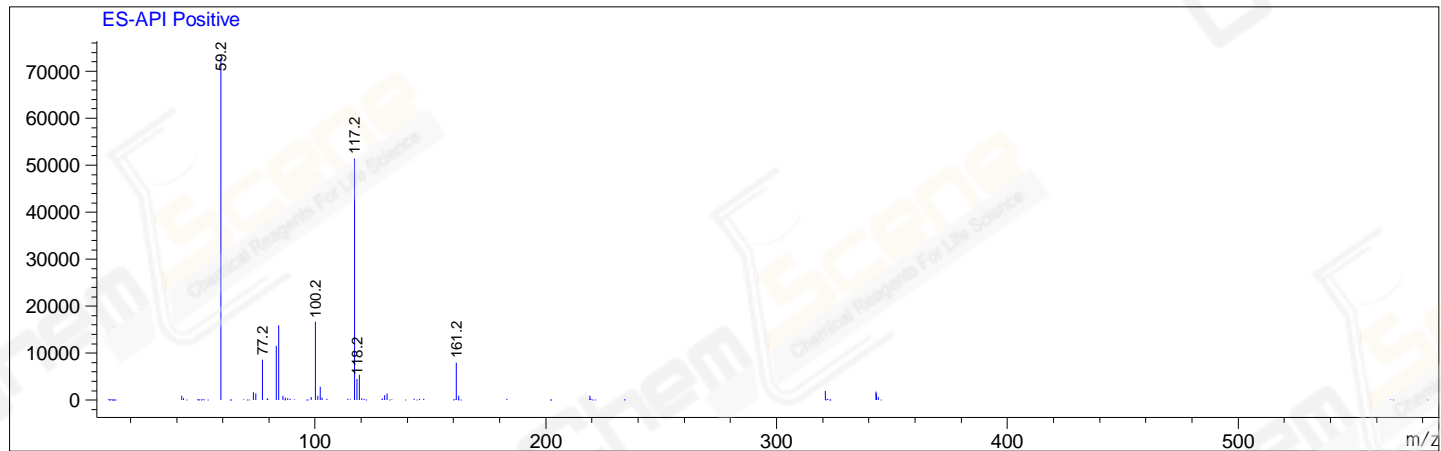
RetTim	Width	Area	Height	Area%
0.75	0.01	519.83	607.17	99.72
1.26	0.02	0.29	0.00	0.06
1.36	0.02	1.19	1.05	0.23

Integration Results for MSD1 TIC, MS File

RetTim	Width	Area	Height	Area%
0.75	0.06	201799.92	52682.15	100.00

Ret. Time: 0.75

<<<< POSITIVE SPECTRA >>>>



Base Peak Ion Ratios:

2nd Largest Peak Ion Ratios:

Ion	Mass	Abundance	Ratio
A	59.20	72839	100.00
A + 4	63.00	84	0.12

Ion	Mass	Abundance	Ratio
B	117.20	51476	100.00
B + 1	118.20	4532	8.80
B + 2	119.20	5364	10.42
B + 3	120.15	404	0.79
B + 4	121.20	235	0.46
B + 5	122.00	63	0.12

\*\*\* End of Report \*\*\*