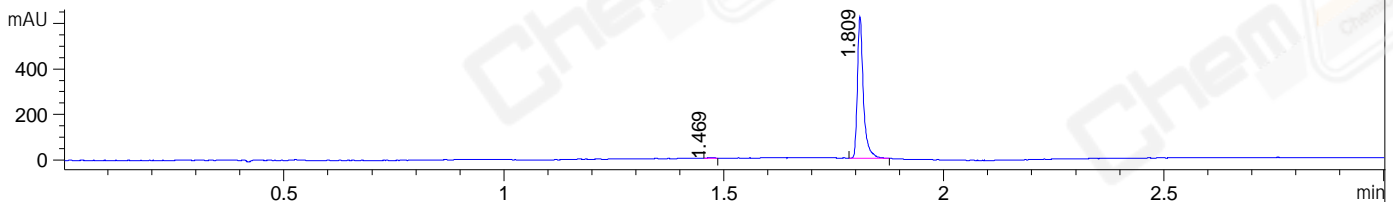
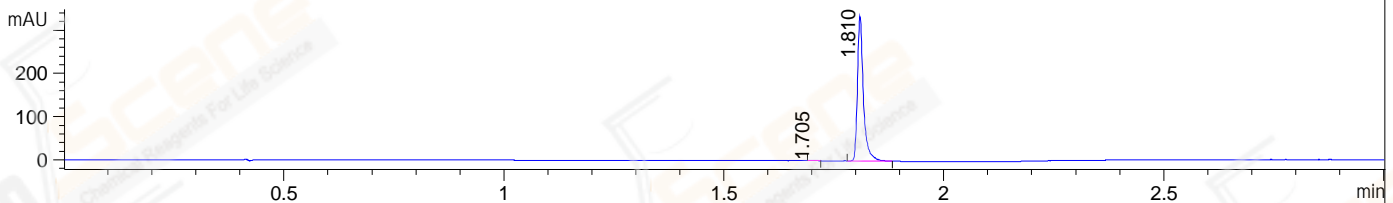


File ..\DATA\2020\20200420\932\BIZ2020-420-SCH1-.D Tgt Mass (CHM):
 Injection Date : 20 Apr 20 11:17 am +0800 Seq. Line : 26
 Sample Name : BIZ2020-420-SCH1 Location : P1-A-02
 Acq. Operator : ZJ_1432 Inj : 1
 Spec. Reported : MS Integration Inj Volume : 0.4 ul
 Acq. Method : D:\Chem32\1\data\2020\20200420\932\1-POS-3MIN.M
 Analysis Method : D:\CHEM32\1\DATA\2020\20200420\932\1-POS-3MIN.M
 Catalog No : CS-0032374
 Method Info : Mobile Phase: A: water(0.01%TFA) B:ACN(0.01%TFA)
 Gradient: 5% to 95%B within 1.3 min
 Flow Rate :1.8ml/min
 Column :SunFire C18, 4.6*50mm,3.5um A-RP-607
 Oven Temperature : 45□

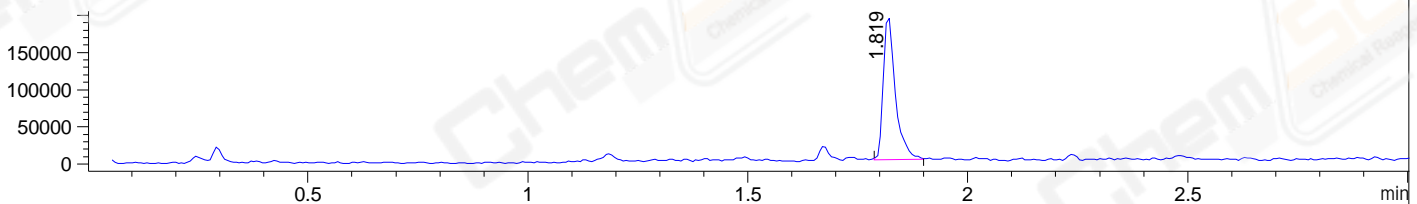
DAD1 B, Sig=214,4 Ref=off



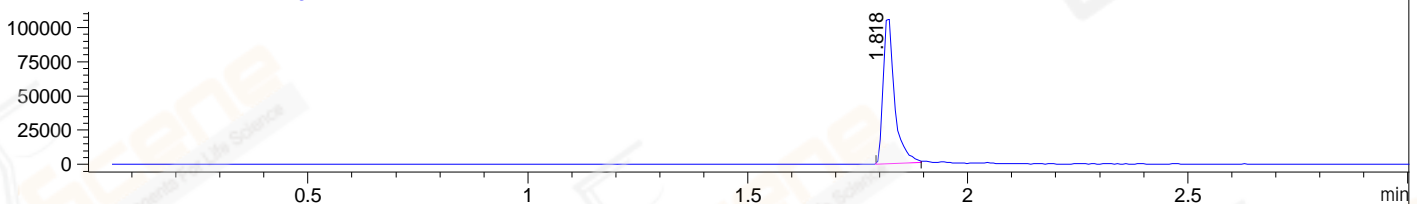
DAD1 C, Sig=254,4 Ref=off



MSD1 TIC, MS File ES-API, Pos, Scan, Frag: 70



Ion 339, MSD1 339, Target Mass 338 +H Positive, EIC=338.7:339.7



Integration Results for DAD1 B, Sig=214,4 Ref=off

RetTim	Width	Area	Height	Area%	MS (+)
1.47	0.01	2.21	2.51	0.37	ND
1.81	0.02	590.39	623.20	99.63	339

Integration Results for DAD1 C, Sig=254,4 Ref=off

RetTim	Width	Area	Height	Area%	MS (+)
1.71	0.01	0.35	0.52	0.11	ND
1.81	0.02	315.93	334.81	99.89	339

Integration Results for MSD1 TIC, MS File

RetTim	Width	Area	Height	Area%	MS (+)
1.82	0.03	362386.53	194221.45	100.00	339

Ret. Time: 1.82

<<<< POSITIVE SPECTRA >>>>

ES-API Positive

