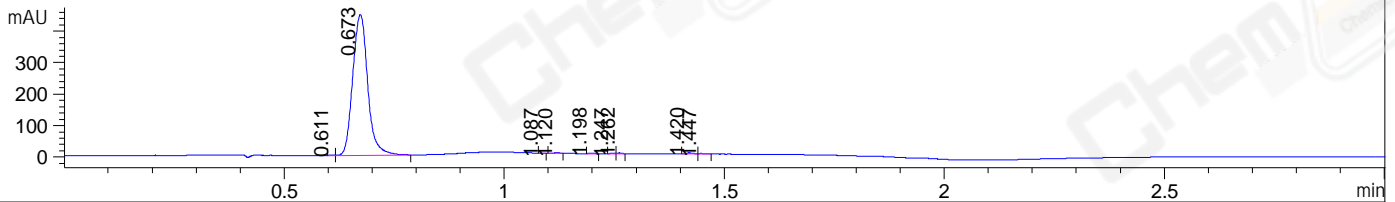
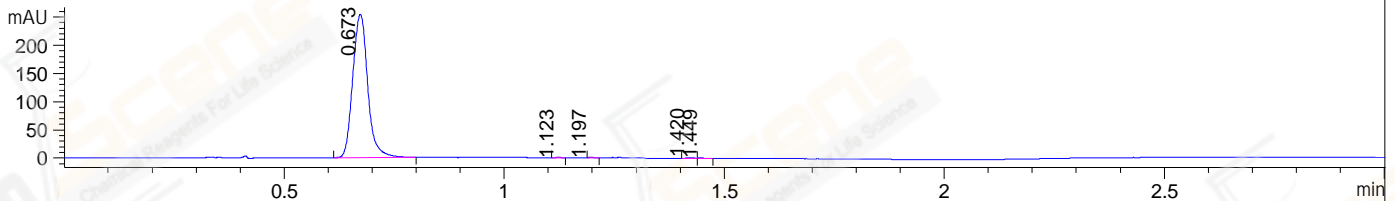


File ..1\DATA\2020\20200521\968\BIZ2020-518-WMX6.D Tgt Mass (CHM):  
Injection Date : 21 May 20 10:28 am +0800 Seq. Line : 22  
Sample Name : BIZ2020-518-WMX6 Location : P1-B-09  
Acq. Operator : ZJ\_1432 Inj : 1  
Spec. Reported : MS Integration Inj Volume : 1 ul  
Acq. Method : D:\Chem32\1\data\2020\20200521\968\1-POS-3MIN.M  
Analysis Method : D:\CHEM32\1\DATA\2020\20200521\968\1-POS-3MIN.M  
CAS NO. : 13441-51-5  
Method Info : Mobile Phase: A: water(0.01%TFA) B:ACN(0.01%TFA)  
Gradient: 5% to 95%B within 1.3 min  
Flow Rate :1.8ml/min  
Column :SunFire C18, 4.6\*50mm,3.5um A-RP-607  
Oven Temperature : 45□

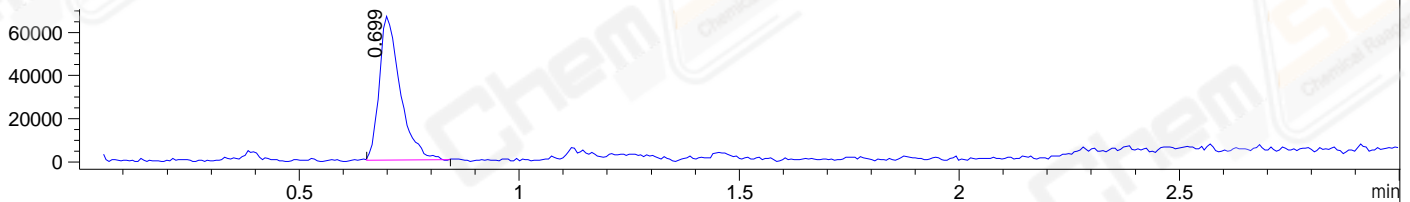
DAD1 B, Sig=214,4 Ref=off



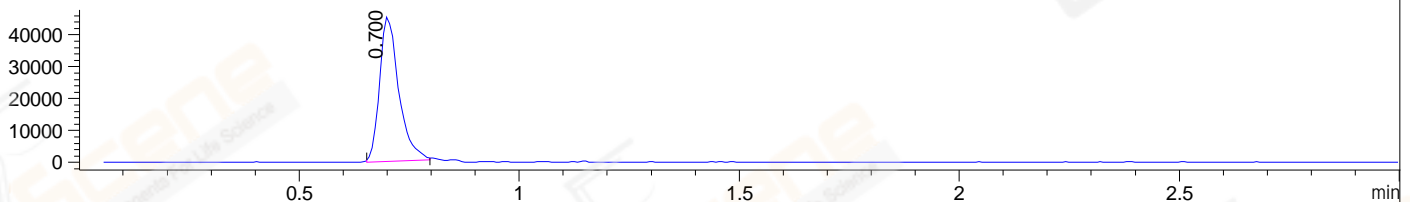
DAD1 C, Sig=254,4 Ref=off



MSD1 TIC, MS File ES-API, Pos, Scan, Frag: 70



Ion 209, MSD1 209, Target Mass 208 +H Positive, EIC=208.7:209.7



Integration Results for DAD1 B, Sig=214,4 Ref=off

RetTim	Width	Area	Height	Area%	MS(+)
0.61	0.01	0.67	0.86	0.06	ND
0.67	0.04	1053.01	446.94	98.84	209
1.09	0.01	0.46	0.69	0.04	ND
1.12	0.02	1.82	1.65	0.17	287
1.20	0.01	1.67	1.96	0.16	361
1.25	0.01	0.95	1.66	0.09	ND
1.26	0.01	1.77	2.47	0.17	ND
1.42	0.02	3.63	3.56	0.34	ND
1.45	0.02	1.40	1.49	0.13	146

Integration Results for DAD1 C, Sig=254,4 Ref=off

RetTim	Width	Area	Height	Area%	MS(+)
0.67	0.04	599.74	253.78	99.42	209
1.12	0.01	0.60	0.73	0.10	287
1.20	0.01	0.74	0.97	0.12	361
1.42	0.02	1.35	1.22	0.22	ND
1.45	0.02	0.80	0.79	0.13	146

## Integration Results for MSD1 TIC, MS File

RetTime	Width	Area	Height	Area%	MS(+)
0.70	0.05	219478.92	66624.02	100.00	209

Ret. Time: 0.70

<<<< POSITIVE SPECTRA >>>>

