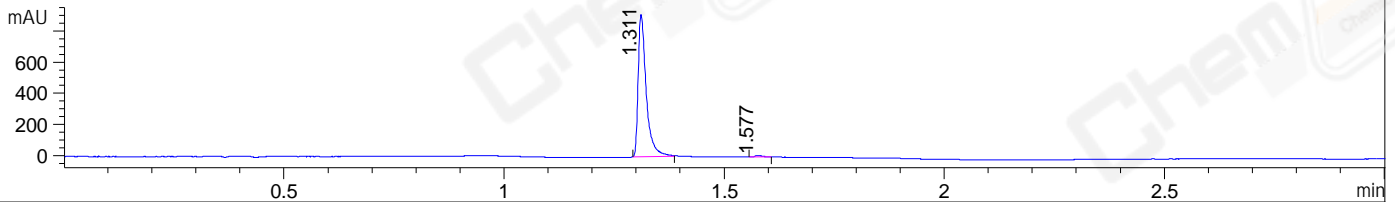
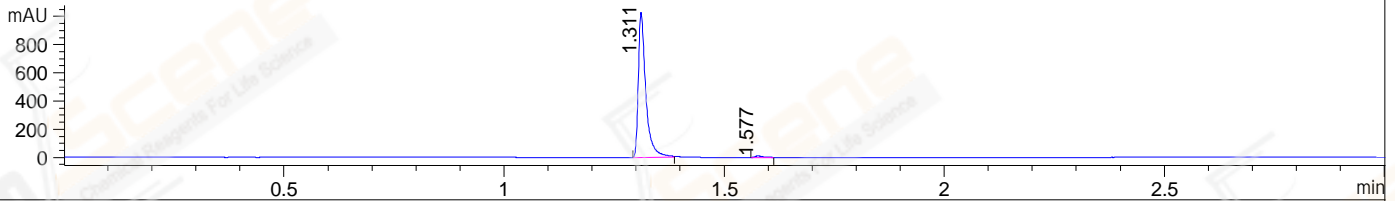


File ..\DATA\2019\20190302\555\CPK2019-221-20483.D Tgt Mass (CHM):
 Injection Date : 2 Mar 19 5:09 pm +0800 Seq. Line : 11
 Sample Name : CPK2019-221-20483 Location : P1-C-03
 Acq. Operator : LQ_1052 Inj : 1
 Spec. Reported : MS Integration Inj Volume : 1 ul
 Acq. Method : D:\Chem32\1\data\2019\20190302\555\1-POS-3MIN-1.M
 Analysis Method : D:\CHEM32\1\DATA\2019\20190302\555\1-POS-3MIN-1.M
 Catalog No : CS-5580
 Method Info : Mobile Phase: A: water(0.01%TFA) B:ACN(0.01%TFA)
 Gradient: 5% to 95%B within 1.3 min
 Flow Rate :1.8ml/min
 Column :SunFire C18, 4.6*50mm,3.5um A-RP-314
 Oven Temperature : 45□

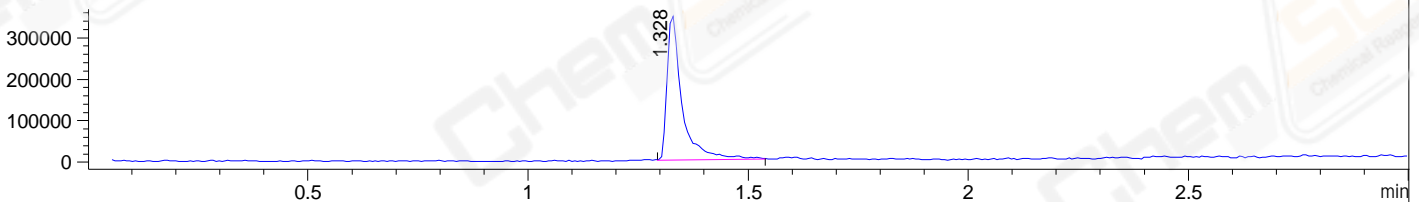
DAD1 B, Sig=214,4 Ref=off



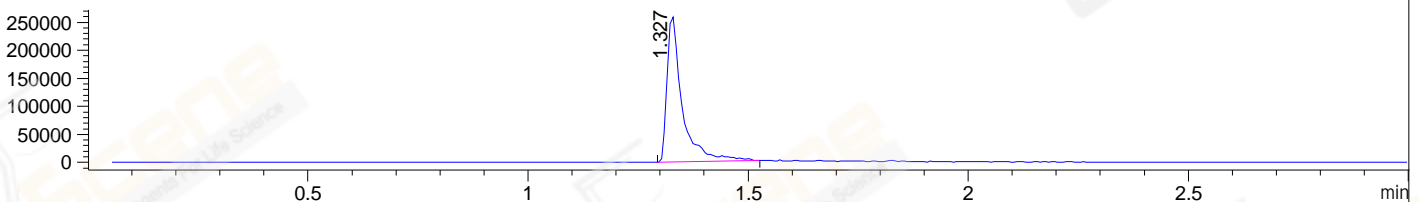
DAD1 C, Sig=254,4 Ref=off



MSD1 TIC, MS File ES-API, Pos, Scan, Frag: 70



Ion 421.3, MSD1 421.3, Target Mass 420.3 +H Positive, EIC=421:422



Integration Results for DAD1 B, Sig=214,4 Ref=off

RetTim	Width	Area	Height	Area%	MS (+)
1.31	0.02	1166.34	913.48	98.90	421
1.58	0.02	12.92	10.44	1.10	421

Integration Results for DAD1 C, Sig=254,4 Ref=off

RetTim	Width	Area	Height	Area%	MS (+)
1.31	0.02	1212.78	1029.92	98.87	421
1.58	0.02	13.90	11.69	1.13	421

Integration Results for MSD1 TIC, MS File

RetTim	Width	Area	Height	Area%	MS (+)
1.33	0.04	822106.31	350341.16	100.00	421

Ret. Time: 1.33

<<<< POSITIVE SPECTRA >>>>

ES-API Positive

