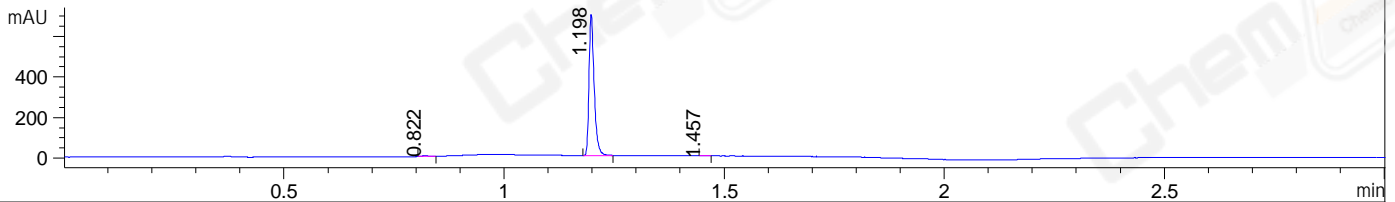
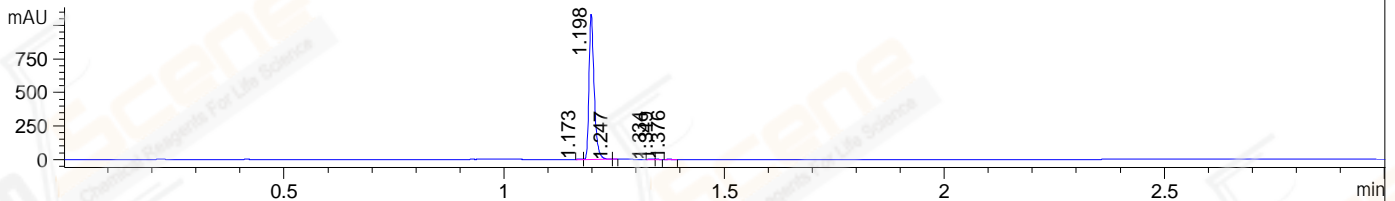


File ..\DATA\2020\20200603\984\BIZ2020-602-SCH5-.D Tgt Mass (CHM):
Injection Date : 3 Jun 20 12:30 pm +0800 Seq. Line : 48
Sample Name : BIZ2020-602-SCH5 Location : P1-B-04
Acq. Operator : ZJ_1432 Inj : 1
Spec. Reported : MS Integration Inj Volume : 0.4 ul
Acq. Method : D:\Chem32\1\data\2020\20200603\984\1-POS-3MIN.M
Analysis Method : D:\CHEM32\1\DATA\2020\20200603\984\1-POS-3MIN.M
Catalog No : CS-0541
Method Info : Mobile Phase: A: water(0.01%TFA) B:ACN(0.01%TFA)
Gradient: 5% to 95%B within 1.3 min
Flow Rate :1.8ml/min
Column :SunFire C18, 4.6*50mm,3.5um A-RP-607
Oven Temperature : 45□

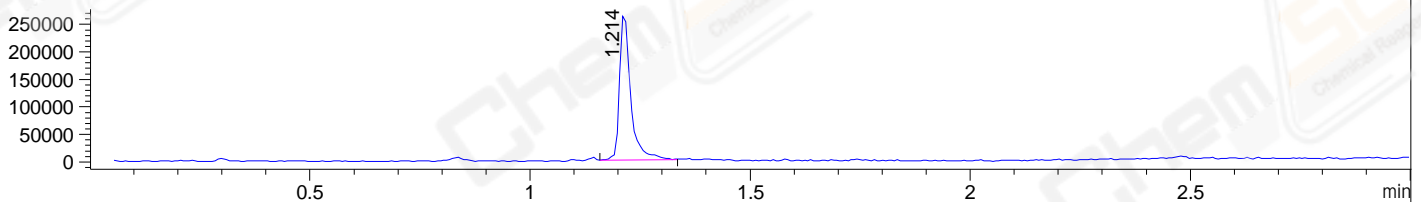
DAD1 B, Sig=214,4 Ref=off



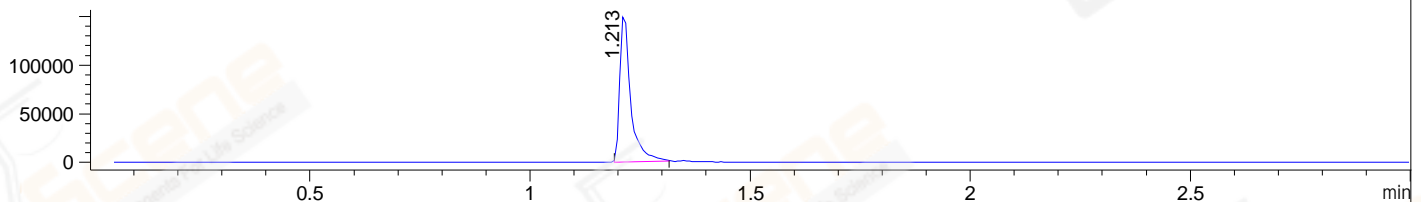
DAD1 C, Sig=254,4 Ref=off



MSD1 TIC, MS File ES-API, Pos, Scan, Frag: 70



Ion 397, MSD1 397, Target Mass 396 +H Positive, EIC=396.7:397.7



Integration Results for DAD1 B, Sig=214,4 Ref=off

RetTim	Width	Area	Height	Area%	MS (+)
0.82	0.02	2.68	2.32	0.47	142
1.20	0.01	564.84	696.97	99.36	397
1.46	0.02	0.97	1.01	0.17	ND

Integration Results for DAD1 C, Sig=254,4 Ref=off

RetTim	Width	Area	Height	Area%	MS (+)
1.17	0.01	1.50	2.34	0.17	381
1.20	0.01	879.67	1086.87	99.52	397
1.25	0.01	0.33	0.79	0.04	397
1.33	0.01	0.80	1.02	0.09	397
1.35	0.01	0.44	0.72	0.05	397
1.38	0.01	1.17	1.54	0.13	ND

Integration Results for MSD1 TIC, MS File

RetTim	Width	Area	Height	Area%	MS (+)
--------	-------	------	--------	-------	--------

1.21 0.03 469894.97 271266.53 100.00 397

Ret. Time: 1.21

<<<< POSITIVE SPECTRA >>>>

ES-API Positive

