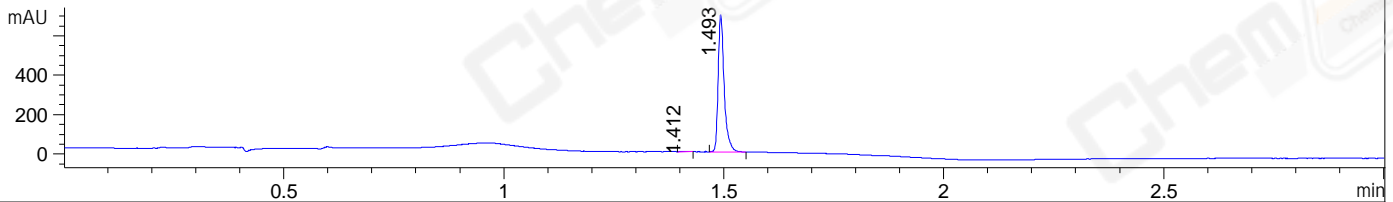
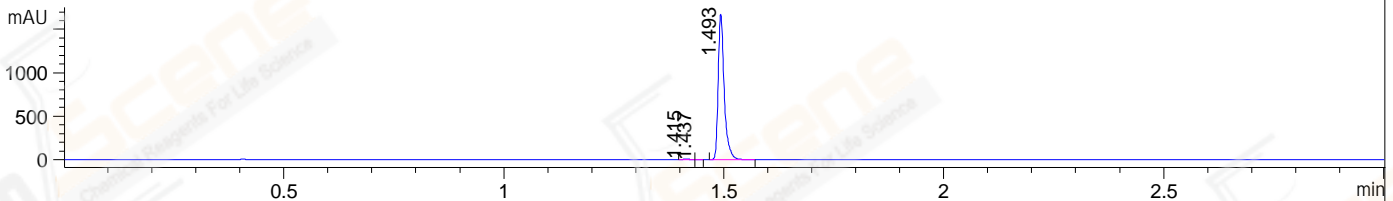


File ..1\DATA\2020\20200612\991\BIZ2020-611-SCH1.D Tgt Mass (CHM):
 Injection Date : 12 Jun 20 3:42 pm +0800 Seq. Line : 65
 Sample Name : BIZ2020-611-SCH1 Location : P1-C-03
 Acq. Operator : ZJ_1432 Inj : 1
 Spec. Reported : MS Integration Inj Volume : 1 ul
 Acq. Method : D:\Chem32\1\data\2020\20200612\991\1-POS-3MIN.M
 Analysis Method : D:\CHEM32\1\DATA\2020\20200612\991\1-POS-3MIN.M
 Catalog No : CS-0019706
 Method Info : Mobile Phase: A: water(0.01%TFA) B:ACN(0.01%TFA)
 Gradient: 5% to 95%B within 1.3 min
 Flow Rate :1.8ml/min
 Column :SunFire C18, 4.6*50mm,3.5um A-RP-607
 Oven Temperature : 45□

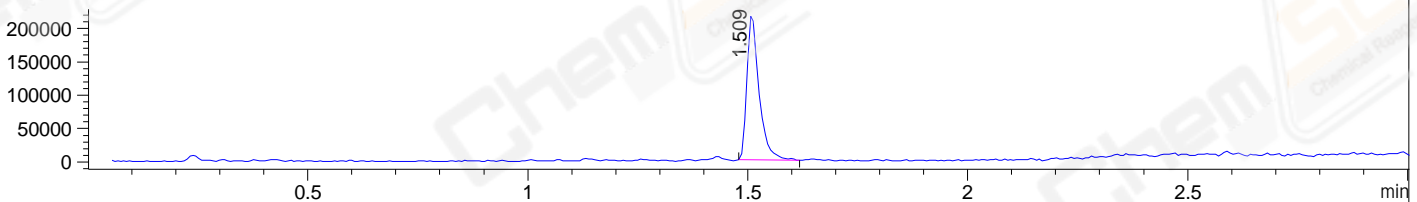
DAD1 B, Sig=214,4 Ref=off



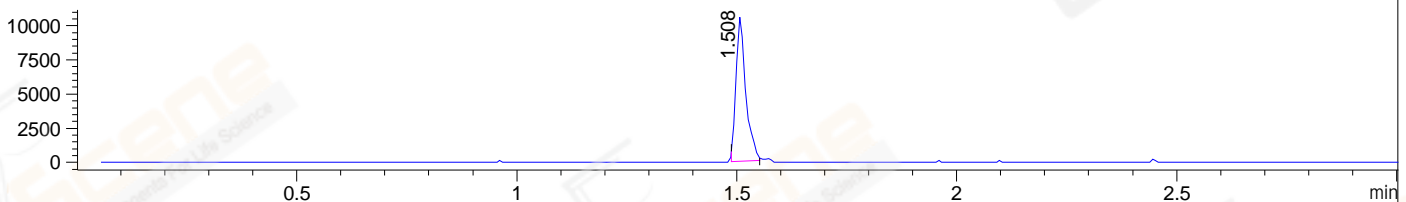
DAD1 C, Sig=254,4 Ref=off



MSD1 TIC, MS File ES-API, Pos, Scan, Frag: 70



Ion 265, MSD1 265, Target Mass 264 +H Positive, EIC=264.7:265.7



Integration Results for DAD1 B, Sig=214,4 Ref=off

RetTim	Width	Area	Height	Area%	MS (+)
1.41	0.02	1.85	1.61	0.28	ND
1.49	0.02	661.94	697.94	99.72	247

Integration Results for DAD1 C, Sig=254,4 Ref=off

RetTim	Width	Area	Height	Area%	MS (+)
1.41	0.01	5.95	6.81	0.37	ND
1.44	0.01	0.48	0.69	0.03	ND
1.49	0.02	1590.03	1674.19	99.60	247

Integration Results for MSD1 TIC, MS File

RetTim	Width	Area	Height	Area%	MS (+)
1.51	0.03	422382.66	221469.95	100.00	247

Ret. Time: 1.51

<<<< POSITIVE SPECTRA >>>>

ES-API Positive

