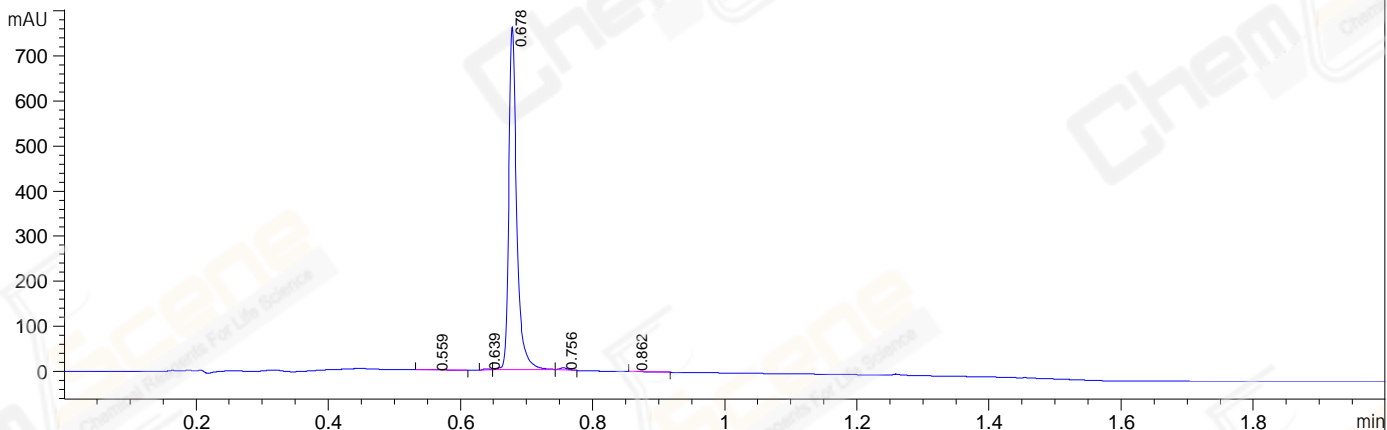
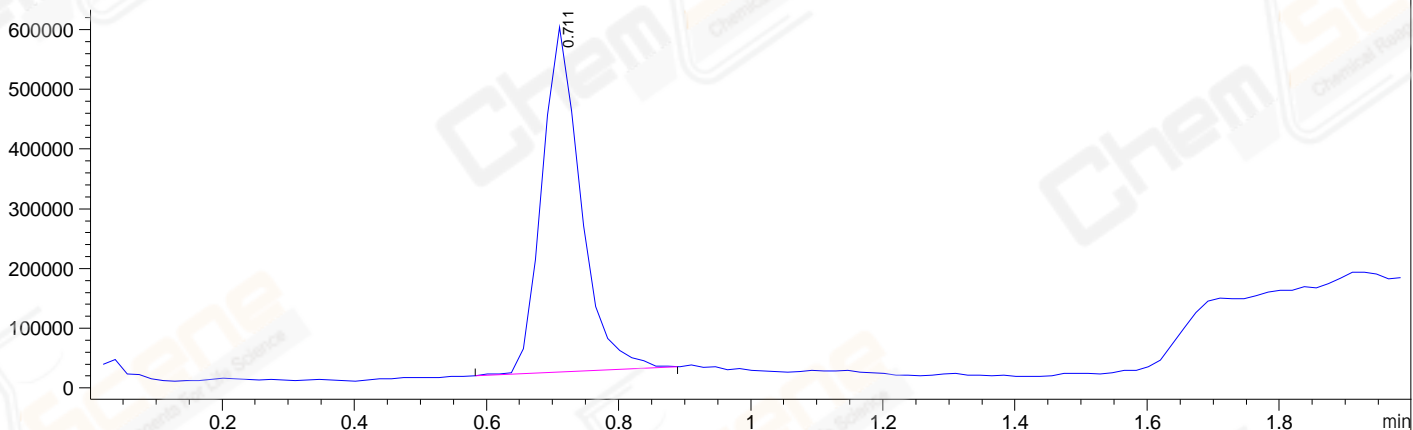


File E:\DATA\2023\2023-06\2023-06-05\CPK2023-605-66073-UPLC-MS-03-011308.D
 Injection Date : 05-Jun-23, 16:09:43 Tgt Mass(EZX) :
 Sample Name : CPK2023-605-66073 Location :
 Acq. Operator : LY_2278 Inj : 1
 Spec. Reported : MS Integration Inj Volume : 0.5 ul
 Acq. Method : E:\Chem32\1\Methods\1-POS-UPLC2.0MIN(0.8)(200-2000).M
 Analysis Method : E:\CHEM32\1\METHODS\1-POS-UPLC2.0MIN(0.8)(200-2000).M
 Product Name: MOTS-c(human) (acetate) WalkUp method: '1-POS-2MIN(200-2000)' Project: CPK2023
 Method Info : Mobile Phase: A: water(0.01%TFA) B:ACN(0.01%TFA)
 Gradient: 5% to 95%B within 1.3 min
 Flow Rate :0.8ml/min
 Column :Poroshell 120 EC- C18, 2.1*50mm,1.9um
 Oven Temperature : 45C

DAD1 A, Sig=214,4 Ref=off



MSD1 TIC, MS File ES-API, Pos, Scan, Frag: 70



Integration Results for DAD1 A, Sig=214,4 Ref=off

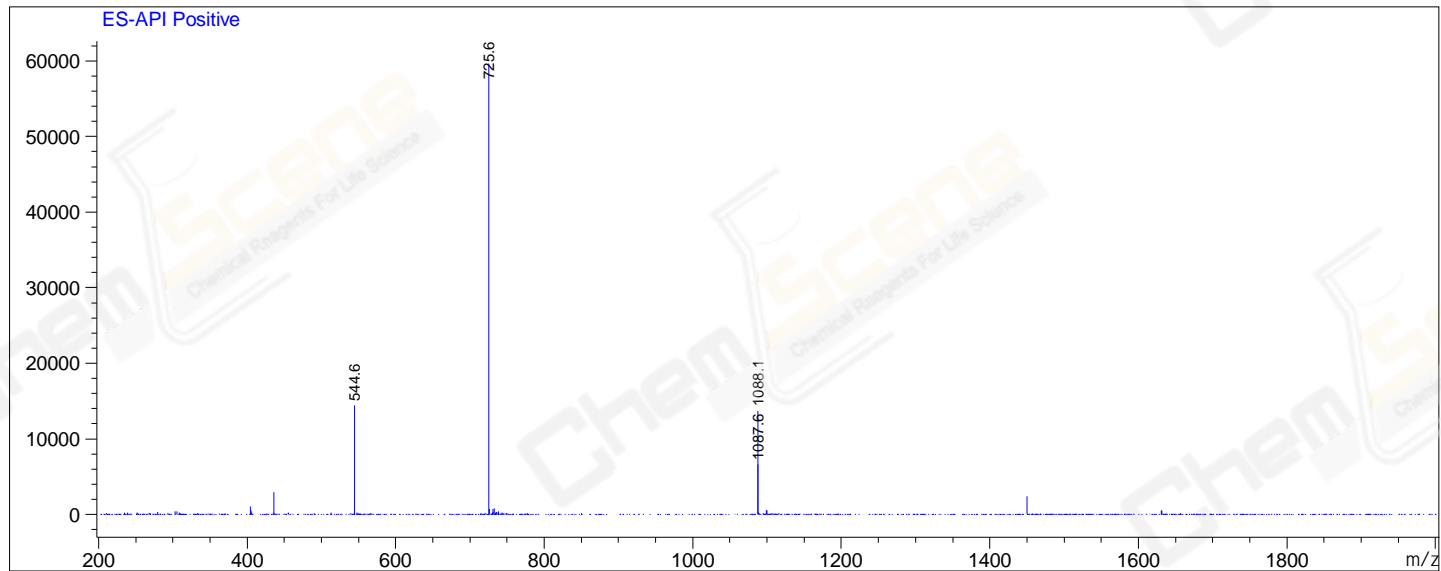
RetTim	Width	Area	Height	Area%
0.56	0.04	1.37	0.50	0.21
0.64	0.01	1.33	2.13	0.21
0.68	0.01	631.84	756.26	98.97
0.76	0.01	3.30	4.32	0.52
0.86	0.02	0.60	0.34	0.09

Integration Results for MSD1 TIC, MS File

RetTim	Width	Area	Height	Area%
0.71	0.06	2347443.00	577429.19	100.00

Ret. Time: 0.71

<<<< POSITIVE SPECTRA >>>>



*** End of Report ***