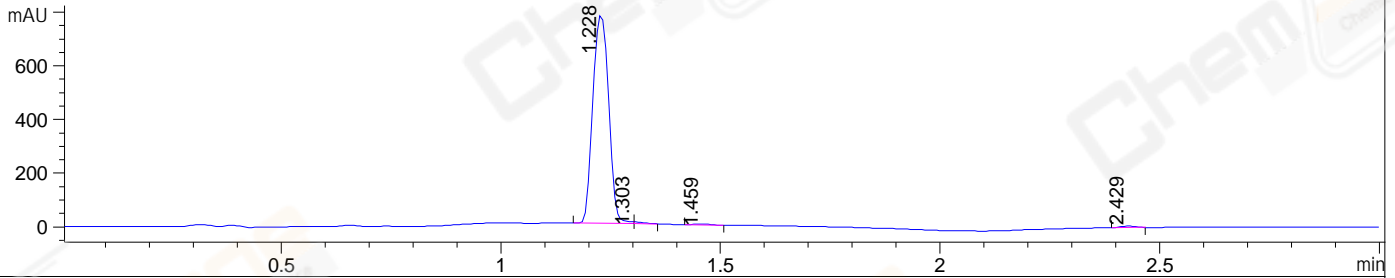
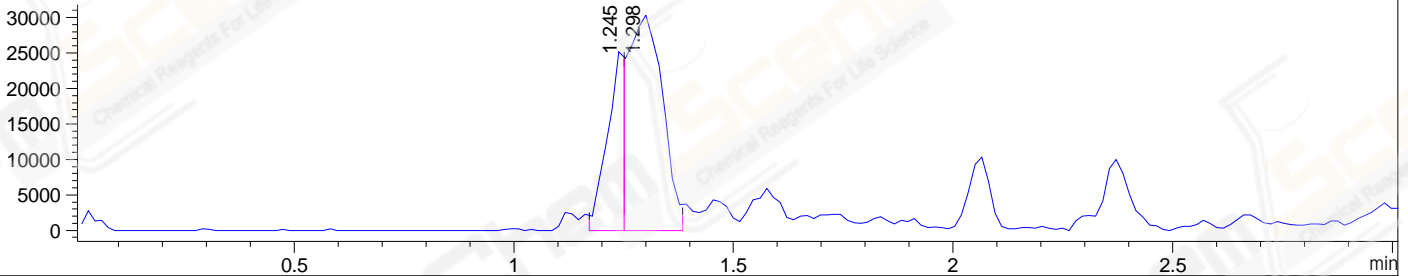


File ..\DATA\2020\20200714\1036\BIZ2020-713-SCH3.D Tgt Mass (CHM):  
Injection Date : 14 Jul 20 9:34 pm +0800 Seq. Line : 132  
Sample Name : BIZ2020-713-SCH3 Location : P1-C-04  
Acq. Operator : ZJ\_1432 Inj : 1  
Spec. Reported : MS Integration Inj Volume : 5 ul  
Acq. Method : D:\Chem32\1\data\2020\20200714\1036\1-POS-3MIN-1(500-2000).M  
Analysis Method : D:\CHEM32\1\DATA\2020\20200714\1036\1-POS-3MIN-1(500-2000).M  
Catalog No : CS-3577  
Method Info : Mobile Phase: A: water(0.01%TFA) B:ACN(0.01%TFA)  
Gradient: 5% to 95%B within 1.3 min  
Flow Rate :1.8ml/min  
Column :SunFire C18, 4.6\*50mm,3.5um A-RP-314  
Oven Temperature : 45C  
Positive,MS:500-2000

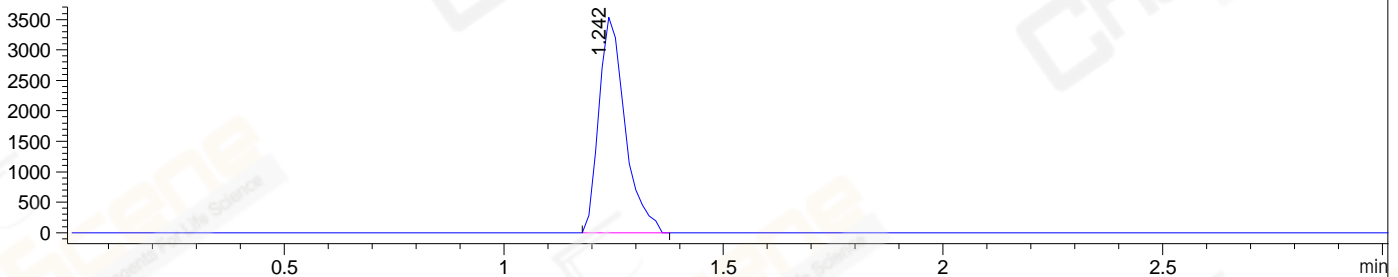
DAD1 B, Sig=214,4 Ref=off



MSD1 TIC, MS File ES-API, Pos, Scan, Frag: 70



Ion 1526, MSD1 1526, Target Mass 1525 +H Positive, EIC=1525.7:1526.7



Integration Results for DAD1 B, Sig=214,4 Ref=off

RetTim	Width	Area	Height	Area%	MS (+)
1.23	0.04	1963.98	778.89	98.44	764
1.30	0.02	9.50	6.74	0.48	680
1.46	0.05	7.91	2.92	0.40	ND
2.43	0.04	13.68	5.85	0.69	ND

Integration Results for MSD1 TIC, MS File

RetTim	Width	Area	Height	Area%	MS (+)
1.25	0.05	64420.51	25854.80	28.18	764
1.30	0.09	164163.61	30400.96	71.82	680

Ret. Time: 1.25 <<<< POSITIVE SPECTRA >>>>



Ret. Time: 1.30

