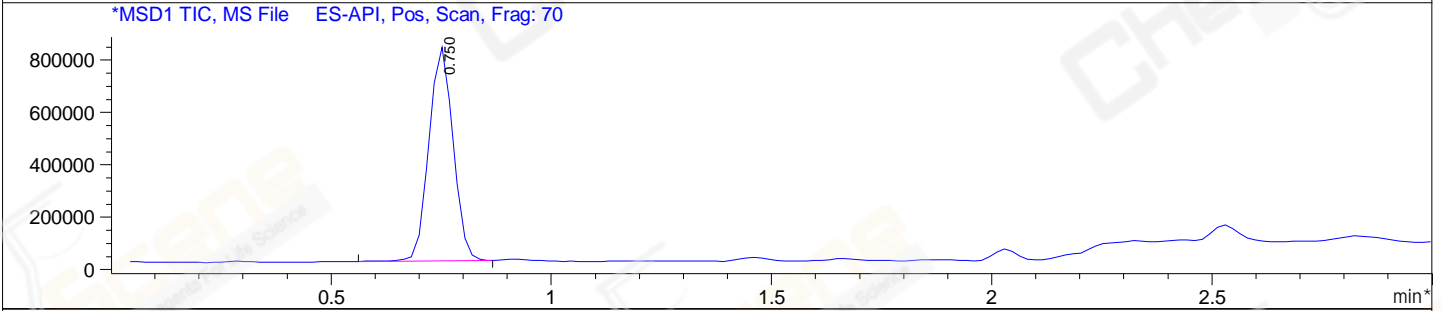
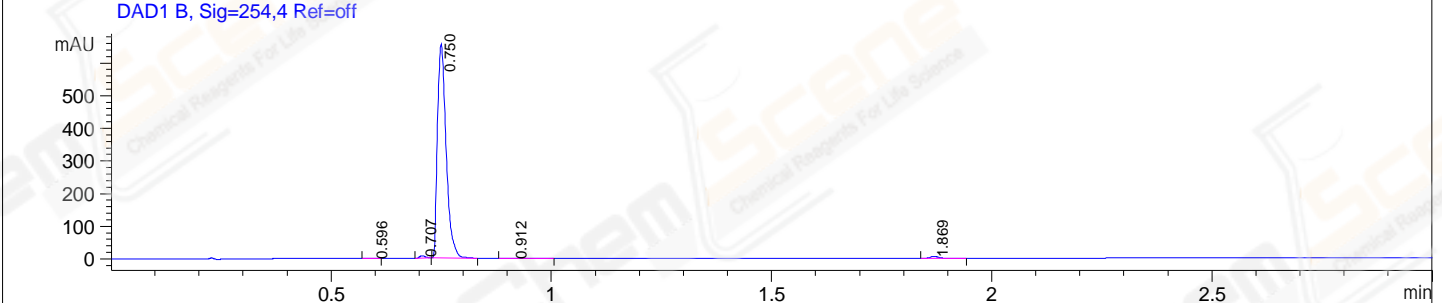
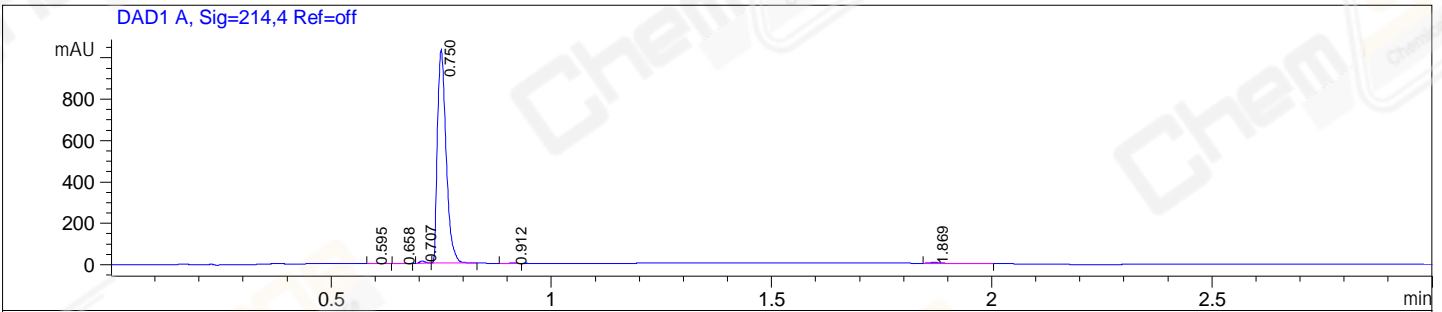


File E:\ChemStation\1\DATA\2023\2023-11\2023-11-21\CPK2023-N21-67514-UPLC-MS-10-020154.D
 Injection Date : 21-Nov-23, 15:26:29 Tgt Mass(EZX) :
 Sample Name : CPK2023-N21-67514 Location : P1-E-01
 Acq. Operator : LY_2278 Inj : 1
 Spec. Reported : MS Integration Inj Volume : 0.8 ul
 Acq. Method : E:\ChemStation\1\Methods\1-POS-UPLC3.0MIN(1.2)(150-1000).M
 Analysis Method : E:\CHEMSTATION\1\METHODS\1-POS-UPLC3.0MIN(1.2)(150-1000).M
 CAS NO. : 2109805-56-1 WalkUp method: '1-POS-3MIN' Project: CPK2023
 Method Info : Mobile Phase: A: water(0.01%TFA) B:ACN(0.01%TFA)
 Gradient: 5% to 95%B within 2.0 min
 Flow Rate :1.2ml/min
 Column :Shim-pack Scepter C18-120, 3.0*33mm,3um
 Oven Temperature : 45C



Integration Results for DAD1 A, Sig=214,4 Ref=off

RetTim	Width	Area	Height	Area%
0.60	0.01	0.93	1.04	0.06
0.66	0.02	0.95	0.90	0.07
0.71	0.01	9.44	10.66	0.66
0.75	0.02	1411.77	1028.88	98.63
0.91	0.02	0.75	0.64	0.05
1.87	0.02	7.60	4.56	0.53

Integration Results for DAD1 B, Sig=254,4 Ref=off

RetTim	Width	Area	Height	Area%
0.60	0.01	0.64	0.68	0.07
0.71	0.01	6.23	6.97	0.68
0.75	0.02	896.15	653.24	98.23
0.91	0.04	1.37	0.47	0.15
1.87	0.02	7.92	6.08	0.87

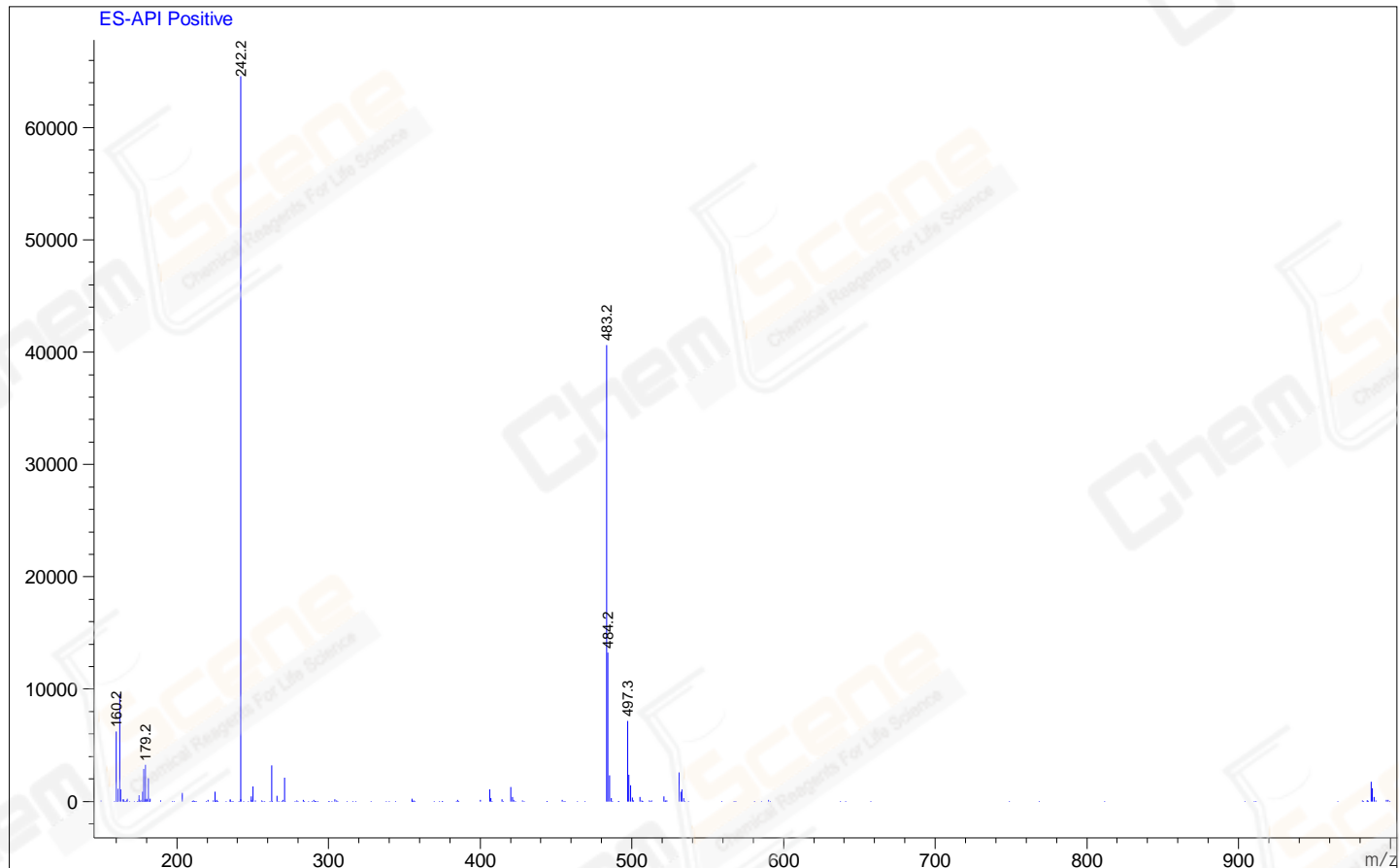
Integration Results for MSD1 TIC, MS File



RetTim	Width	Area	Height	Area%
--------	-------	------	--------	-------

Ret. Time: 0.75

<<<< POSITIVE SPECTRA >>>>



*** End of Report ***