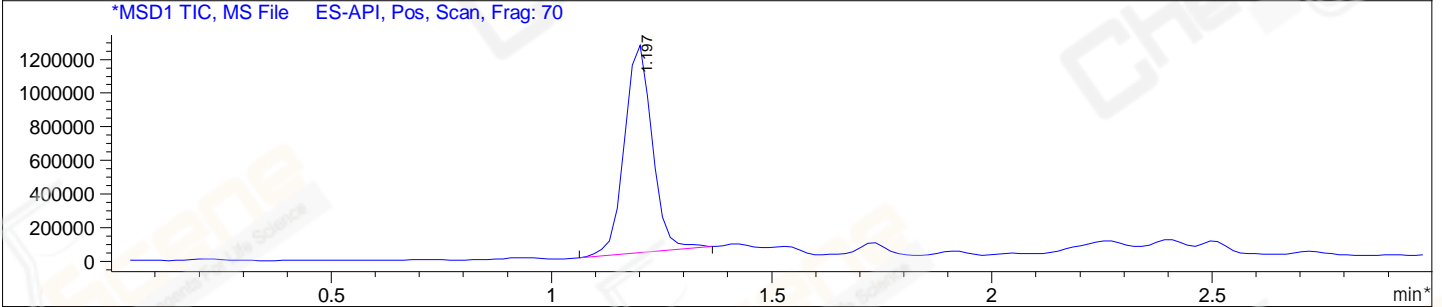
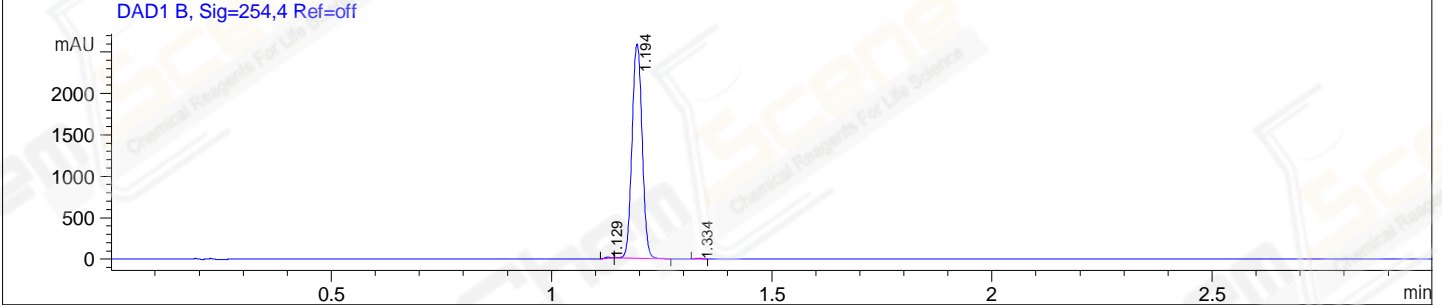
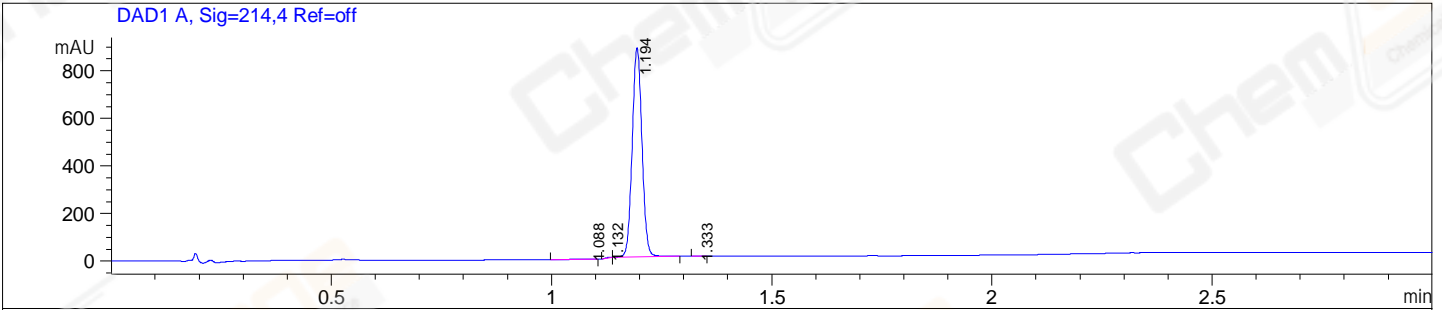


File E:\ChemStation\1\DATA\2024\2024-12\2024-12-24\BIZ2024-D19-126-UPLC-MS-10-051867.D
 Injection Date : 24-Dec-24, 15:53:12 Tgt Mass(EZX) :
 Sample Name : BIZ2024-D19-126 Location : P2-E-10
 Acq. Operator : LY_2278 Inj : 1
 Spec. Reported : MS Integration Inj Volume : 5 ul
 Acq. Method : E:\ChemStation\1\Methods\1-POS-UPLC3.0MIN(1.2)(150-1000).M
 Analysis Method : E:\CHEMSTATION\1\METHODS\1-POS-UPLC3.0MIN(1.2)(150-1000).M
 CAS NO. : 52-39-1 WalkUp method: '1-POS-3MIN' Project: BIZ2024
 Method Info : Mobile Phase: A: water(0.01%TFA) B:ACN(0.01%TFA)
 Gradient: 5% to 95%B within 2.0 min
 Flow Rate :1.2ml/min
 Column :Shim-pack Scepter C18-120, 3.0*33mm,3um
 Oven Temperature : 45C



Integration Results for DAD1 A, Sig=214,4 Ref=off

RetTim	Width	Area	Height	Area%
1.09	0.05	3.88	1.04	0.28
1.13	0.02	2.19	2.10	0.16
1.19	0.02	1360.16	878.52	99.47
1.33	0.02	1.20	1.20	0.09

Integration Results for DAD1 B, Sig=254,4 Ref=off

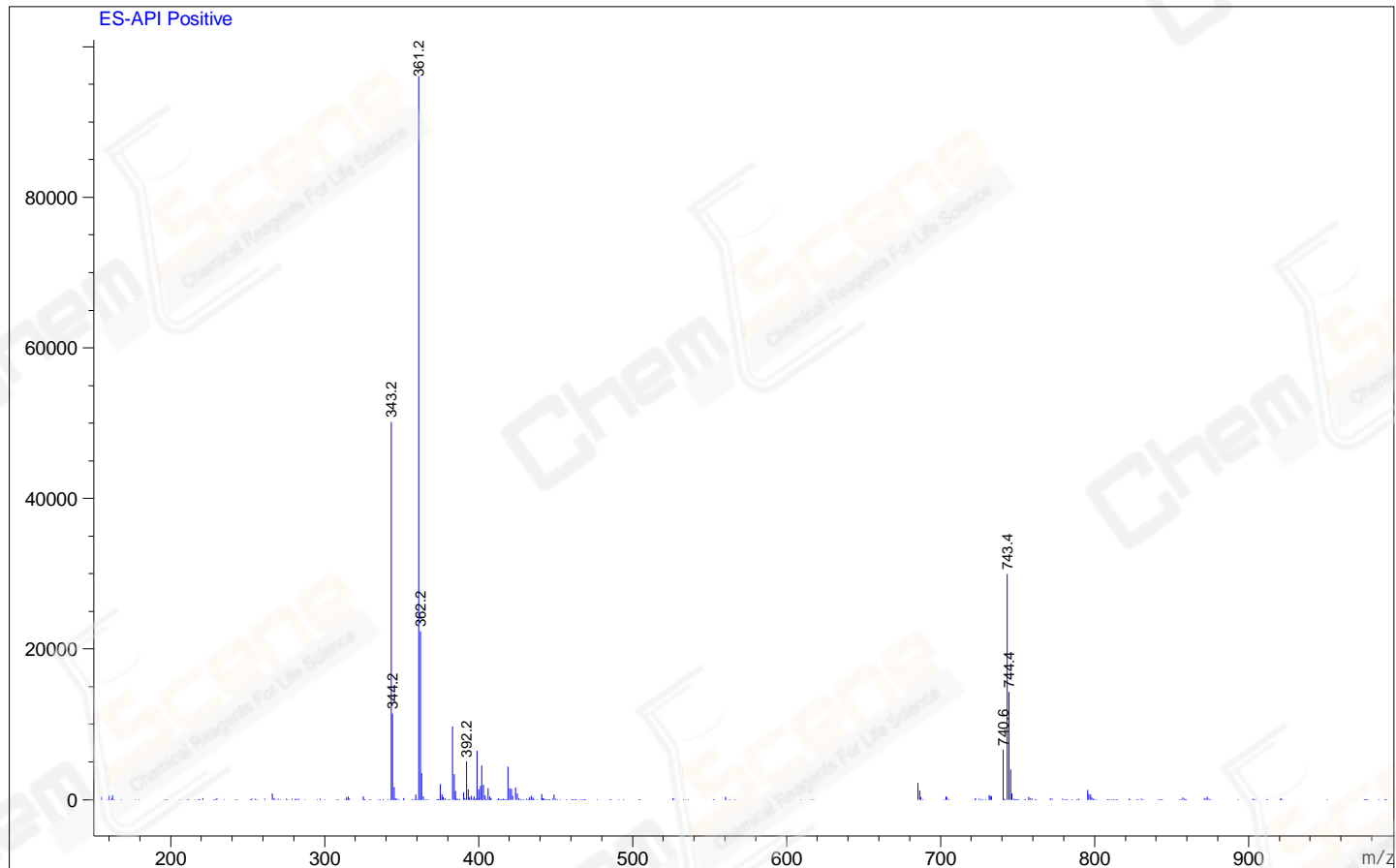
RetTim	Width	Area	Height	Area%
1.13	0.02	12.40	12.99	0.30
1.19	0.03	4129.37	2583.92	99.61
1.33	0.02	3.95	3.81	0.10

Integration Results for MSD1 TIC, MS File

RetTim	Width	Area	Height	Area%
1.20	0.07	5433107.50	1241531.63	100.00

Ret. Time: 1.20

<<<< POSITIVE SPECTRA >>>>



*** End of Report ***