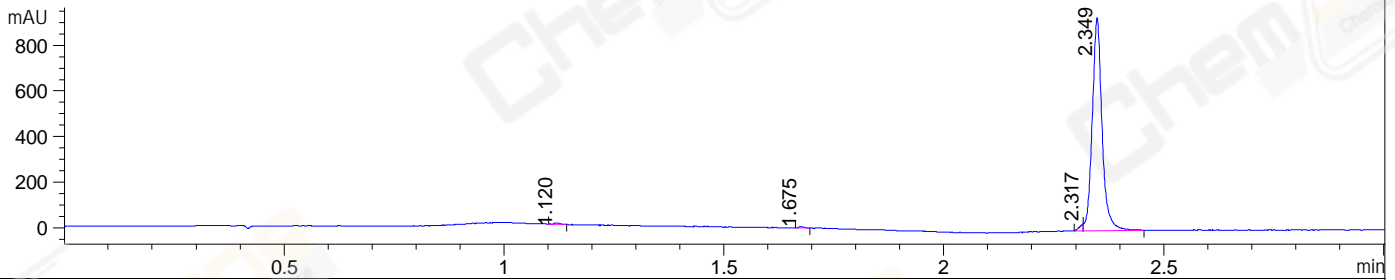
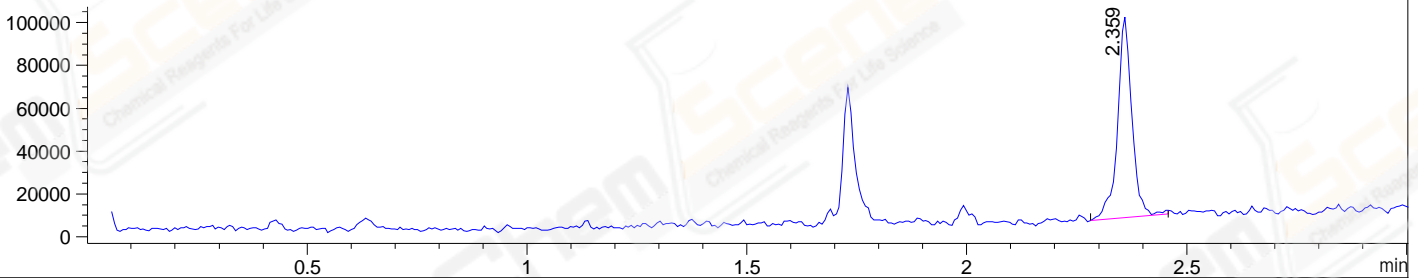


File ..\DATA\2020\20200716\1040\BIZ2020-714-WMX6.D Tgt Mass (CHM):
 Injection Date : 16 Jul 20 3:57 pm +0800 Seq. Line : 45
 Sample Name : BIZ2020-714-WMX6 Location : P1-C-04
 Acq. Operator : ZJ_1432 Inj : 1
 Spec. Reported : MS Integration Inj Volume : 1 ul
 Acq. Method : D:\Chem32\1\data\2020\20200716\1040\1-POS-3MIN.M
 Analysis Method : D:\CHEM32\1\DATA\2020\20200716\1040\1-POS-3MIN.M
 Catalog No : CS-7178
 Method Info : Mobile Phase: A: water(0.01%TFA) B:ACN(0.01%TFA)
 Gradient: 5% to 95%B within 1.3 min
 Flow Rate :1.8ml/min
 Column :SunFire C18, 4.6*50mm,3.5um A-RP-607
 Oven Temperature : 45□

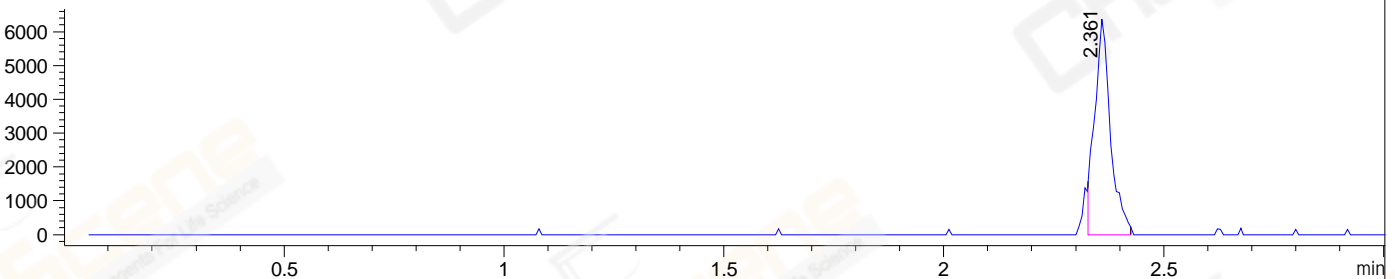
DAD1 B, Sig=214,4 Ref=off



MSD1 TIC, MS File ES-API, Pos, Scan, Frag: 70



Ion 297, MSD1 297, Target Mass 296 +H Positive, EIC=296.7:297.7



Integration Results for DAD1 B, Sig=214,4 Ref=off

RetTim	Width	Area	Height	Area%	MS (+)
1.12	0.01	5.14	6.20	0.35	261
1.68	0.01	5.05	5.52	0.34	261
2.32	0.01	18.53	29.57	1.25	261
2.35	0.03	1451.64	934.07	98.06	319

Integration Results for MSD1 TIC, MS File

RetTim	Width	Area	Height	Area%	MS (+)
2.36	0.03	213156.95	93988.44	100.00	319

Ret. Time: 2.36

<<<< POSITIVE SPECTRA >>>>

ES-API Positive

