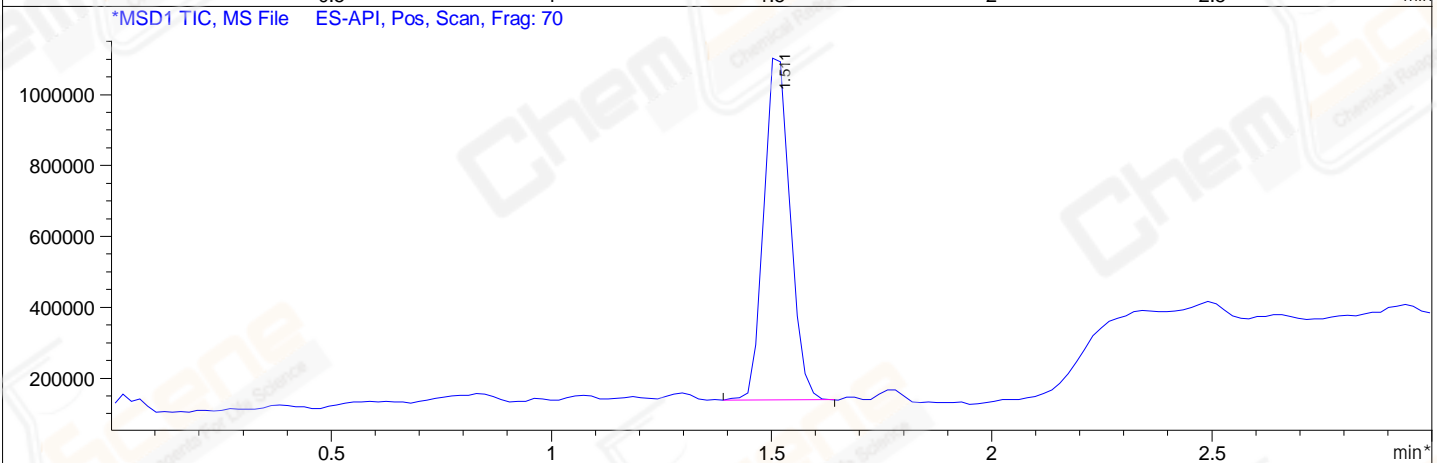
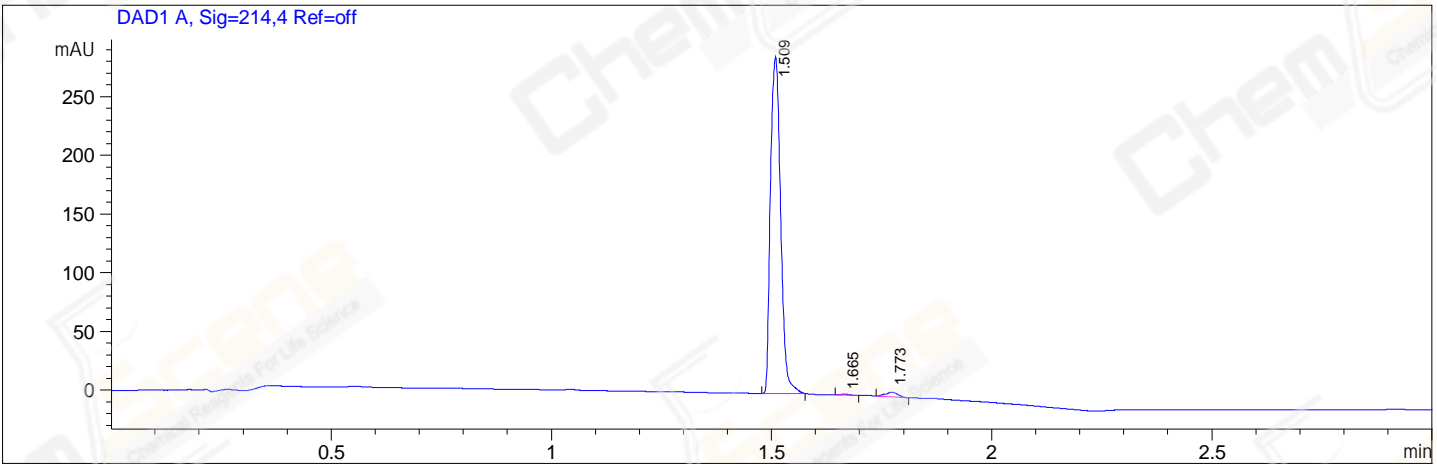


File E:\ChemStation\1\DATA\2023\2023-08\2023-08-22\CPK2023-822-67691-UPLC-MS-10-011428.D
 Injection Date : 22-Aug-23, 17:45:28 Tgt Mass(EZX) :
 Sample Name : CPK2023-822-67691 Location : P1-E-02
 Acq. Operator : LY_2278 Inj : 1
 Spec. Reported : MS Integration Inj Volume : 0.5 ul
 Acq. Method : E:\ChemStation\1\Methods\1-POS-UPLC3.0MIN(1.2)(150-2000).M
 Analysis Method : E:\CHEMSTATION\1\METHODS\1-POS-UPLC3.0MIN(1.2)(150-2000).M
 CAS NO. : 2249944-98-5 WalkUp method: '1-POS-3MIN-(150-2000)' Project: CPK2023
 Method Info : Mobile Phase: A: water(0.01%TFA) B:ACN(0.01%TFA)
 Gradient: 5% to 95%B within 2.0 min
 Flow Rate :1.2ml/min
 Column :Shim-pack Scepter C18-120, 3.0*33mm,3um
 Oven Temperature : 45C



Integration Results for DAD1 A, Sig=214,4 Ref=off

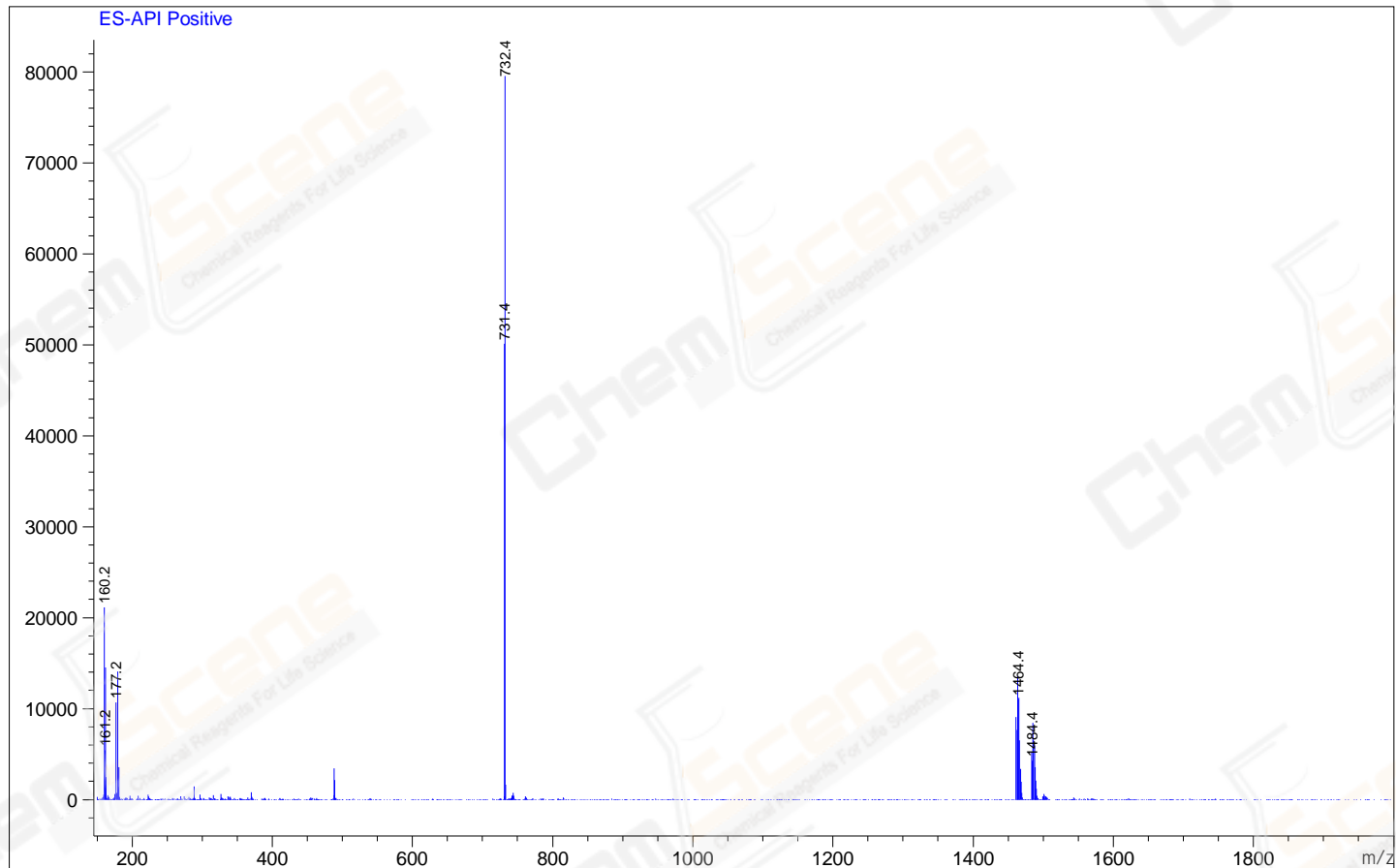
RetTim	Width	Area	Height	Area%
1.51	0.03	459.80	287.16	98.11
1.67	0.02	1.12	0.78	0.24
1.77	0.03	7.73	4.05	1.65

Integration Results for MSD1 TIC, MS File

RetTim	Width	Area	Height	Area%
1.51	0.09	4006190.50	1012717.50	100.00

Ret. Time: 1.51

<<<< POSITIVE SPECTRA >>>>



*** End of Report ***