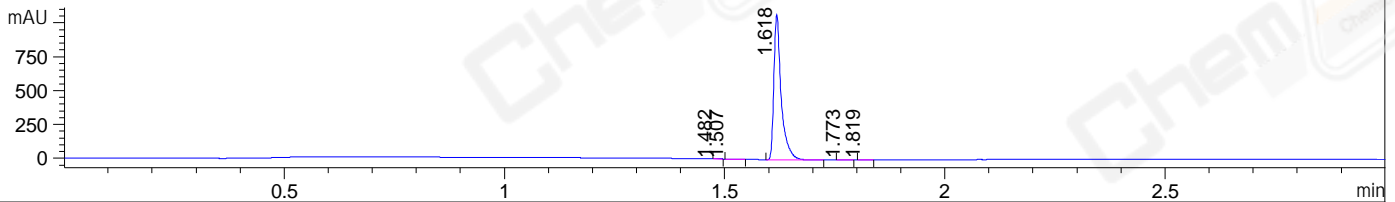
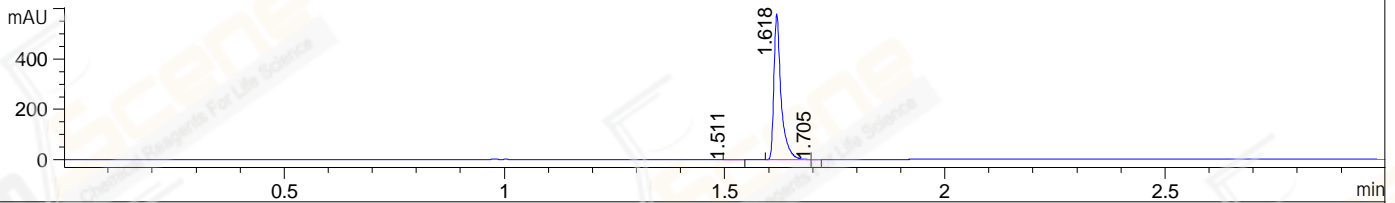


File ..20191123 2019-11-23 08-32-47\LJ1911210091.D Tgt Mass (CHM):  
 Injection Date : 23 Nov 19 1:29 pm +0800 Seq. Line : 54  
 Sample Name : LJ1911210091 Location : P1-E-02  
 Acq. Operator : SYSTEM Inj : 1  
 Spec. Reported : MS Integration Inj Volume : 0.3 ul  
 Acq. Method : D:\LCMS03\Data\20191123\20191123 2019-11-23 08-32-47\1-POS-3MIN.M  
 Analysis Method : D:\CHEM32\1\DATA\2019\20191123\20191123 2019-11-23 08-32-47\1-POS-3MIN.M  
 Catalog No : CS-D1469 Batch#Lc1121086  
 Method Info : Mobile Phase: A: water(0.01%TFA) B:ACN(0.01%TFA)  
 Gradient: 5% to 95%B within 1.3 min  
 Flow Rate :1.8ml/min  
 Column :SunFire C18, 4.6\*50mm,3.5um A-RP-446  
 Oven Temperature : 45C

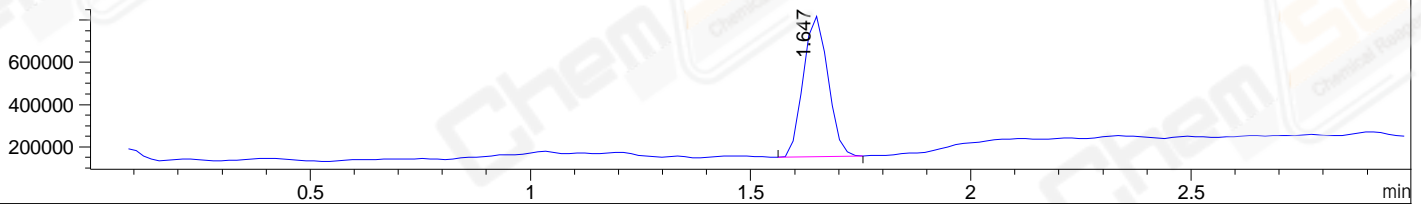
DAD1 A, Sig=214,4 Ref=off



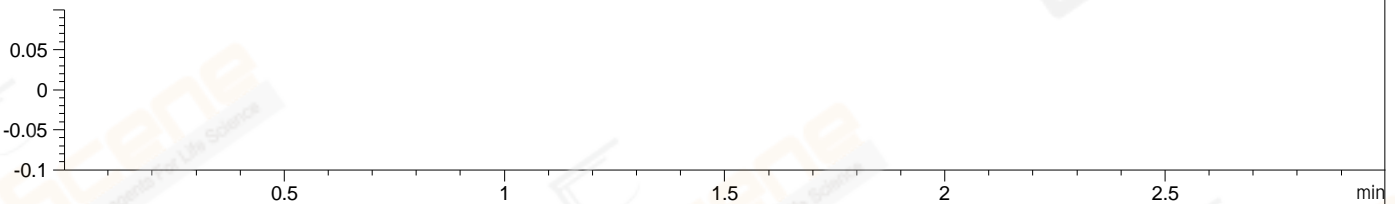
DAD1 B, Sig=254,4 Ref=off



MSD1 TIC, MS File ES-API, Pos, Scan, Frag: 70



Ion 1, MSD1 1, Target Mass 0 +H Positive, EIC=0.7:1.7



Integration Results for DAD1 A, Sig=214,4 Ref=off

RetTim	Width	Area	Height	Area%	MS (+)
1.48	0.01	0.44	0.58	0.04	114
1.51	0.02	0.73	0.47	0.06	114
1.62	0.02	1237.44	1071.01	99.84	434
1.77	0.01	0.37	0.43	0.03	114
1.82	0.02	0.44	0.43	0.04	114

Integration Results for DAD1 B, Sig=254,4 Ref=off

RetTim	Width	Area	Height	Area%	MS (+)
1.51	0.02	0.43	0.32	0.07	114
1.62	0.02	651.49	576.00	99.91	434
1.71	0.01	0.15	0.22	0.02	114

Integration Results for MSD1 TIC, MS File

RetTim	Width	Area	Height	Area%	MS (+)
1.65	0.06	2579250.00	667865.94	100.00	434

Ret. Time: 1.65

<<<< POSITIVE SPECTRA >>>>

