

File E:\DATA\2024\2024-12\2024-12-31\BIZ2024-D30-127-1-UPLC-MS-03-059852.D

Injection Date : 31-Dec-24, 15:03:23

Tgt Mass(EZX) :

Sample Name : BIZ2024-D30-127-1

Location :

Acq. Operator : LY\_2278

Inj : 1

Spec. Reported : MS Integration

Inj Volume : 5 ul

Acq. Method : E:\Chem32\1\Methods\1-POS-UPLC2.0MIN(0.8)-(150-2000).M

Analysis Method : E:\CHEM32\1\METHODS\1-POS-UPLC2.0MIN(0.8)-(150-2000).M

CAS NO. : 2170484-59-8 WalkUp method: '1-POS-2MIN(150-2000)' Project: BIZ2024

Method Info : Mobile Phase: A: water(0.01%TFA) B:ACN(0.01%TFA)

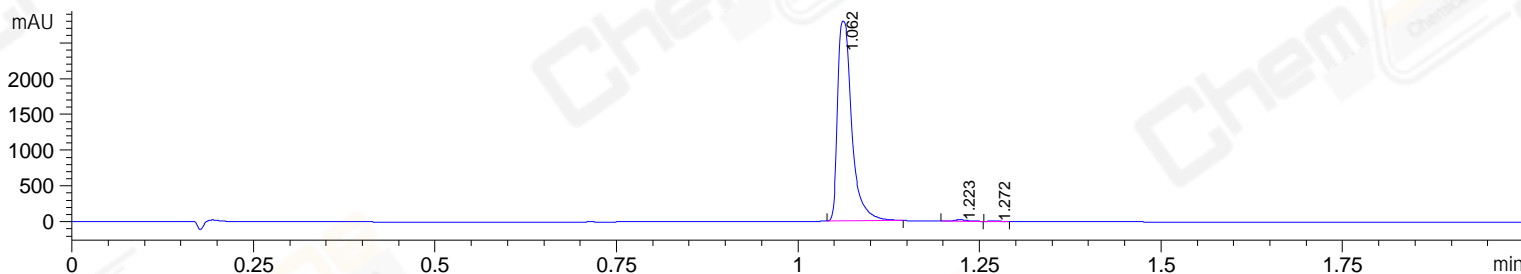
Gradient: 5% to 95%B within 4 min

Flow Rate :0.8ml/min

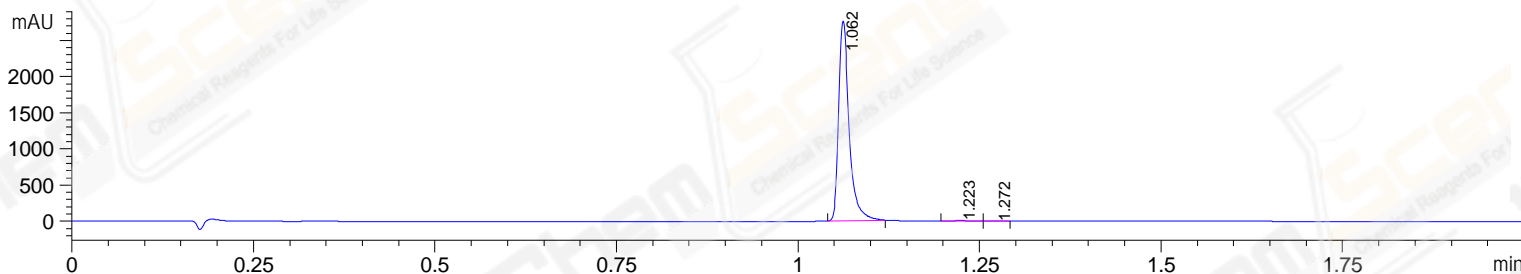
Column :Poroshell 120 EC- C18, 2.1\*50mm,1.9um

Oven Temperature : 45C

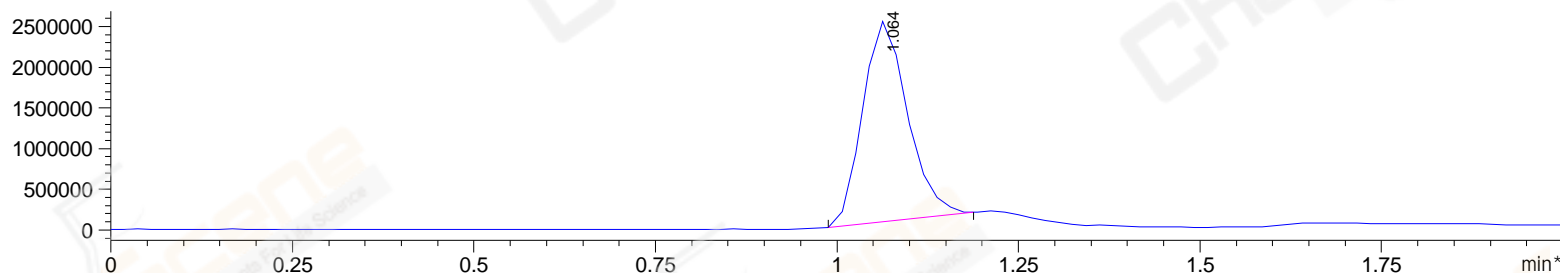
DAD1 A, Sig=214,4 Ref=off



DAD1 B, Sig=254,4 Ref=off



\*MSD1 TIC, MS File ES-API, Pos, Scan, Frag: 70



Integration Results for DAD1 A, Sig=214,4 Ref=off

| RetTim | Width | Area    | Height  | Area% |
|--------|-------|---------|---------|-------|
| 1.06   | 0.02  | 3782.63 | 2803.37 | 99.18 |
| 1.22   | 0.02  | 25.02   | 20.70   | 0.66  |
| 1.27   | 0.01  | 6.19    | 7.63    | 0.16  |

Integration Results for DAD1 B, Sig=254,4 Ref=off

| RetTim | Width | Area    | Height  | Area% |
|--------|-------|---------|---------|-------|
| 1.06   | 0.02  | 2762.33 | 2792.68 | 99.48 |
| 1.22   | 0.02  | 11.53   | 9.77    | 0.42  |
| 1.27   | 0.01  | 2.91    | 3.61    | 0.10  |

Integration Results for MSD1 TIC, MS File

| RetTim | Width | Area        | Height     | Area%  |
|--------|-------|-------------|------------|--------|
| 1.06   | 0.07  | 10633144.00 | 2463316.25 | 100.00 |

Ret. Time: 1.06

&lt;&lt;&lt;&lt; POSITIVE SPECTRA &gt;&gt;&gt;&gt;

