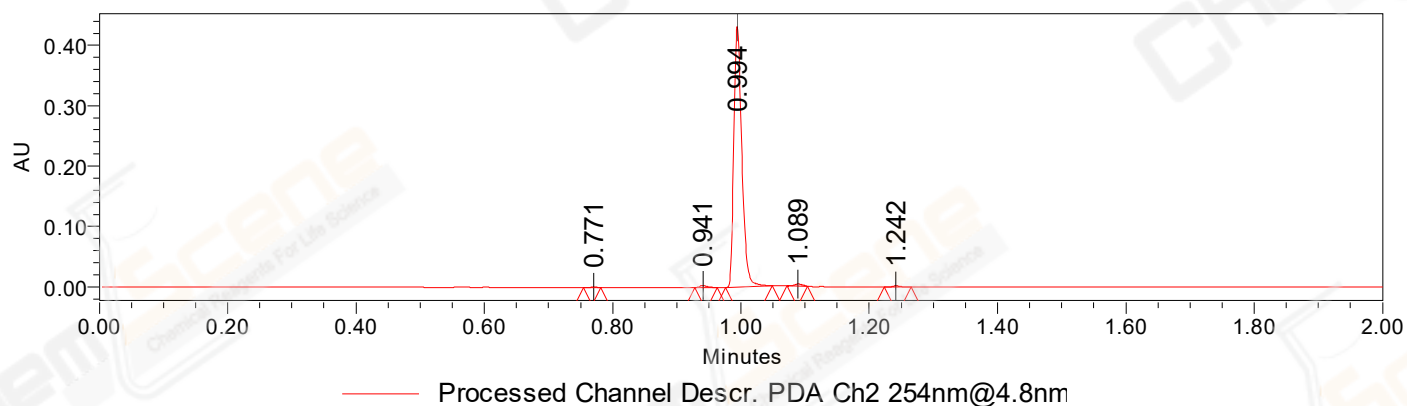


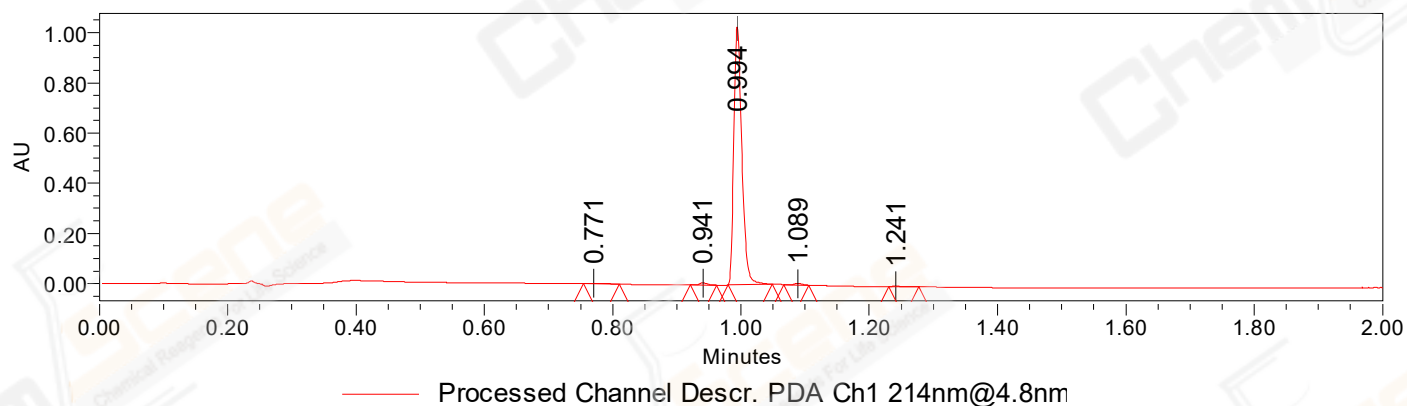
SAMPLE INFORMATION

CAS NO.:	1346607-05-3	Acquired By:	LY
Sample information:		Date Acquired:	2/15/2023 6:18:47 PM CST
Vial:	1:E,3	Acq. Method Set:	1_POS_2MIN
Injection #:	1	Date Processed:	2/16/2023 9:59:23 AM CST,
Injection Volume:	0.30 ul	Processing Method:	PDA_01, MS_scan
Run Time:	2.8 Minutes	Channel Name:	PDA Ch1 214nm@4.8nm, MS TIC,
Sample Set Name:	20230215	Column Name:	A-RP-985

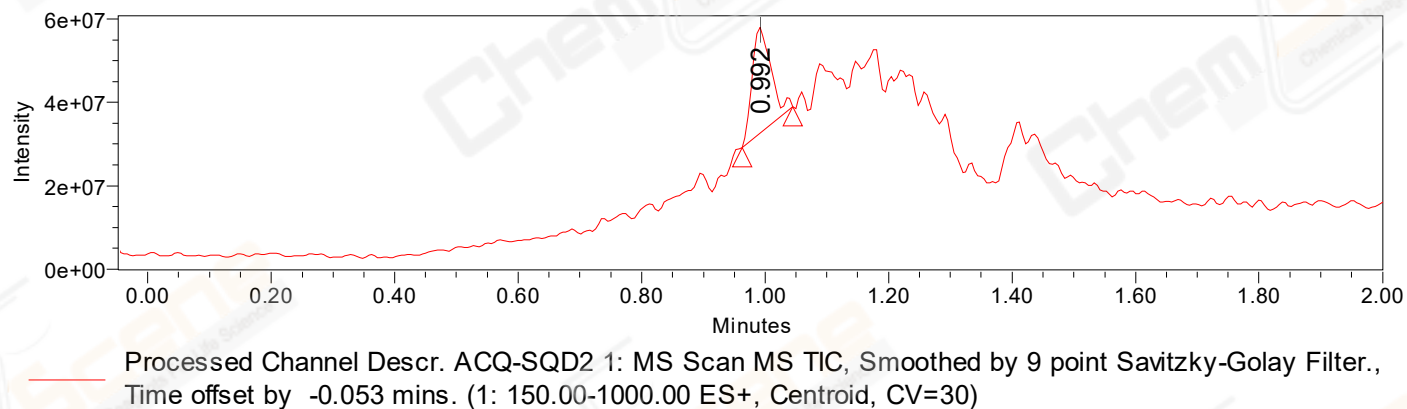
Auto-Scaled Chromatogram



Auto-Scaled Chromatogram



Auto-Scaled Chromatogram



Peak Results
Channel Name: PDA Ch2 254nm@4.8nm

	RT	Width (sec)	Area	Height	% Area	Base Peak (Combined) (m/z)	Channel Name
1	0.771	1.650	453	700	0.12	161.36	PDA Ch2 254nm@4.8nm
2	0.941	2.050	2734	3339	0.72	152.03	PDA Ch2 254nm@4.8nm
3	0.994	4.350	374239	431324	98.01	151.96	PDA Ch2 254nm@4.8nm
4	1.089	1.950	2979	3629	0.78	152.97	PDA Ch2 254nm@4.8nm
5	1.242	2.500	1431	1707	0.37	152.03	PDA Ch2 254nm@4.8nm

Peak Results
Channel Name: PDA Ch1 214nm@4.8nm

	RT	Width (sec)	Area	Height	% Area	Base Peak (Combined) (m/z)	Channel Name
1	0.771	3.350	2874	2303	0.32	151.01	PDA Ch1 214nm@4.8nm
2	0.941	2.400	6968	8576	0.77	152.08	PDA Ch1 214nm@4.8nm
3	0.994	4.150	890562	1027134	98.02	151.96	PDA Ch1 214nm@4.8nm
4	1.089	2.350	4967	5948	0.55	152.97	PDA Ch1 214nm@4.8nm
5	1.241	2.800	3140	2769	0.35	150.18	PDA Ch1 214nm@4.8nm

Peak Results
Channel Name: MS TIC

	RT	Width (sec)	Area	Height	% Area	Base Peak (Combined) (m/z)	Channel Name
1	0.992	4.932	53646719	25266850	100.00	490.00	MS TIC

Match Plot

