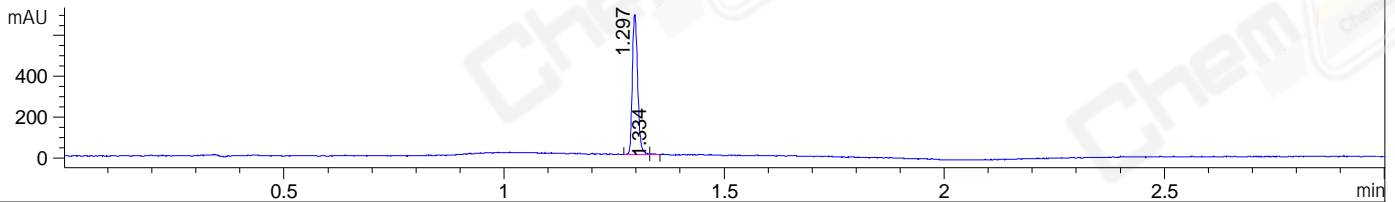
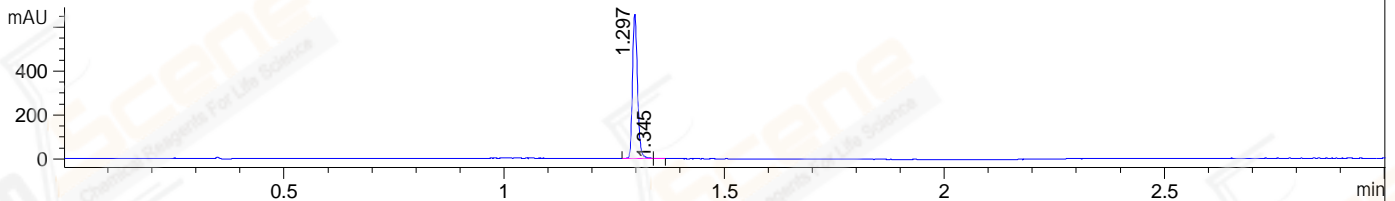


File ..DATA\2020\20200819\1076\BIZ2020-817-WLQ10.D Tgt Mass (CHM):
 Injection Date : 19 Aug 20 8:53 pm +0800 Seq. Line : 125
 Sample Name : BIZ2020-817-WLQ10 Location : P1-A-07
 Acq. Operator : zyj_1547 Inj : 1
 Spec. Reported : MS Integration Inj Volume : 1 ul
 Acq. Method : D:\Chem32\1\data\2020\20200819\1076\1-POS-3MIN.M
 Analysis Method : D:\CHEM32\1\DATA\2020\20200819\1076\1-POS-3MIN.M
 Catalog No : CS-0036
 Method Info : Mobile Phase: A: water(0.01%TFA) B:ACN(0.01%TFA)
 Gradient: 5% to 95%B within 1.3 min
 Flow Rate :1.8ml/min
 Column :SunFire C18, 4.6*50mm,3.5um A-RP-607
 Oven Temperature : 45C

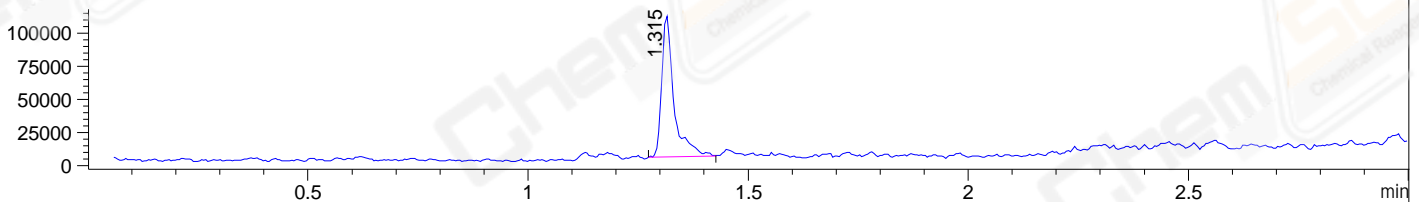
DAD1 B, Sig=214,4 Ref=off



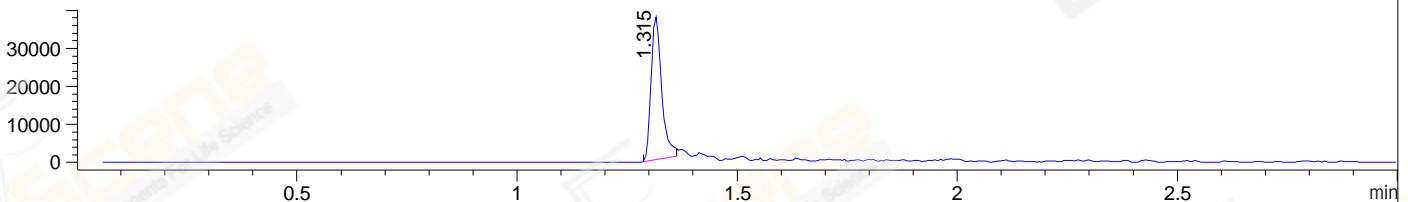
DAD1 C, Sig=254,4 Ref=off



MSD1 TIC, MS File ES-API, Pos, Scan, Frag: 70



Ion 581, MSD1 581, Target Mass 580 +H Positive, EIC=580.7:581.7



Integration Results for DAD1 B, Sig=214,4 Ref=off

RetTim	Width	Area	Height	Area%	MS (+)
1.30	0.01	577.06	688.24	99.49	581
1.33	0.01	2.97	3.96	0.51	581

Integration Results for DAD1 C, Sig=254,4 Ref=off

RetTim	Width	Area	Height	Area%	MS (+)
1.30	0.01	518.43	658.32	99.66	581
1.34	0.02	1.76	1.62	0.34	581

Integration Results for MSD1 TIC, MS File

RetTim	Width	Area	Height	Area%	MS (+)
1.31	0.03	204361.00	106992.37	100.00	581

Ret. Time: 1.31

<<<< POSITIVE SPECTRA >>>>

