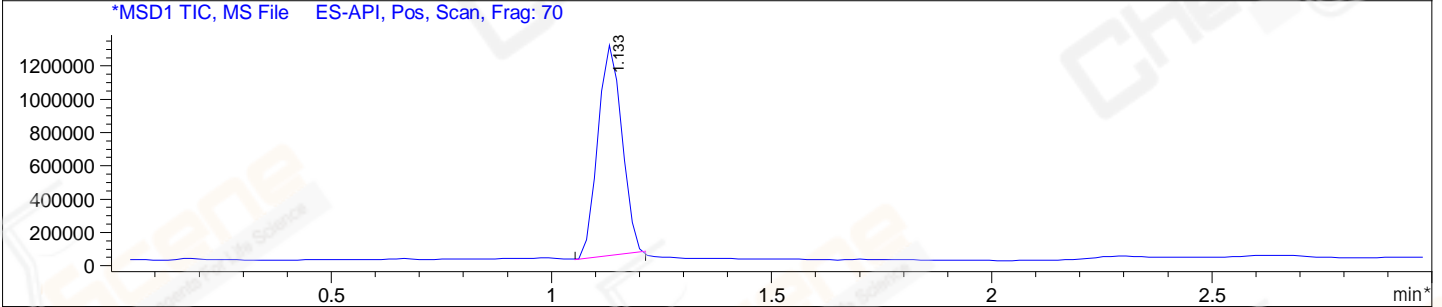
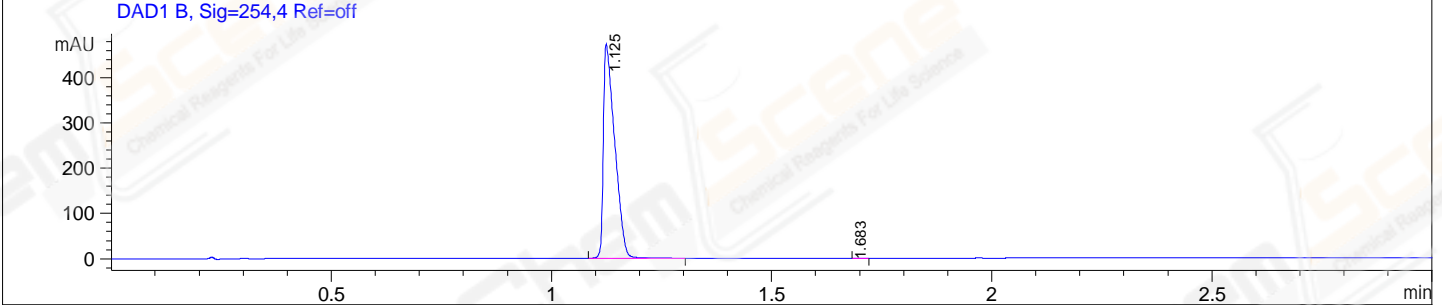
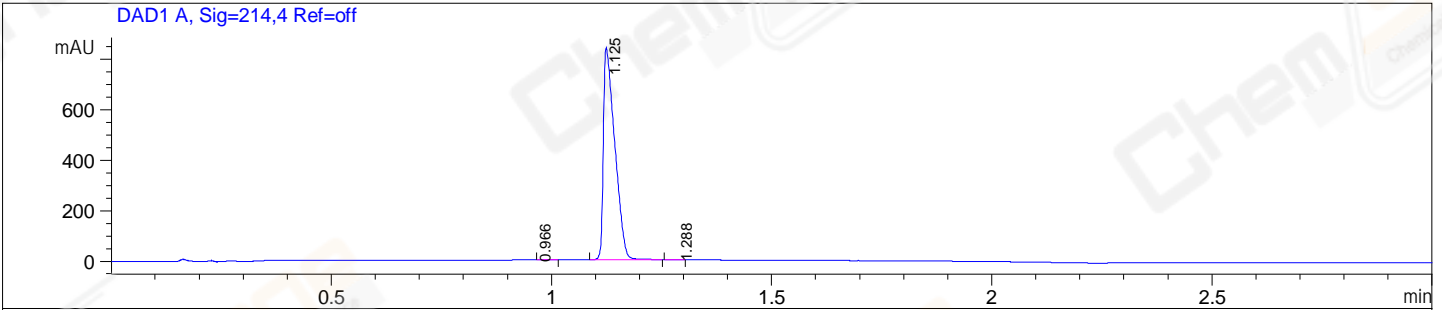


File E:\ChemStation\1\DATA\2024\2024-05\2024-05-21\CPK2024-521-79533-UPLC-MS-10-034174.D
 Injection Date : 21-May-24, 22:17:47 Tgt Mass(EZX) :
 Sample Name : CPK2024-521-79533 Location : P1-D-05
 Acq. Operator : LY_2278 Inj : 1
 Spec. Reported : MS Integration Inj Volume : 0.8 ul
 Acq. Method : E:\ChemStation\1\Methods\1-POS-UPLC3.0MIN(1.2)(150-1000).M
 Analysis Method : E:\CHEMSTATION\1\METHODS\1-POS-UPLC3.0MIN(1.2)(150-1000).M
 CAS NO. : 924416-43-3 WalkUp method: '1-POS-3MIN' Project: CPK2024
 Method Info : Mobile Phase: A: water(0.01%TFA) B:ACN(0.01%TFA)
 Gradient: 5% to 95%B within 2.0 min
 Flow Rate :1.2ml/min
 Column :Shim-pack Scepter C18-120, 3.0*33mm,3um
 Oven Temperature : 45C



Integration Results for DAD1 A, Sig=214,4 Ref=off

RetTim	Width	Area	Height	Area%
0.97	0.02	0.68	-0.01	0.04
1.12	0.03	1509.72	835.29	99.88
1.29	0.04	1.07	0.47	0.07

Integration Results for DAD1 B, Sig=254,4 Ref=off

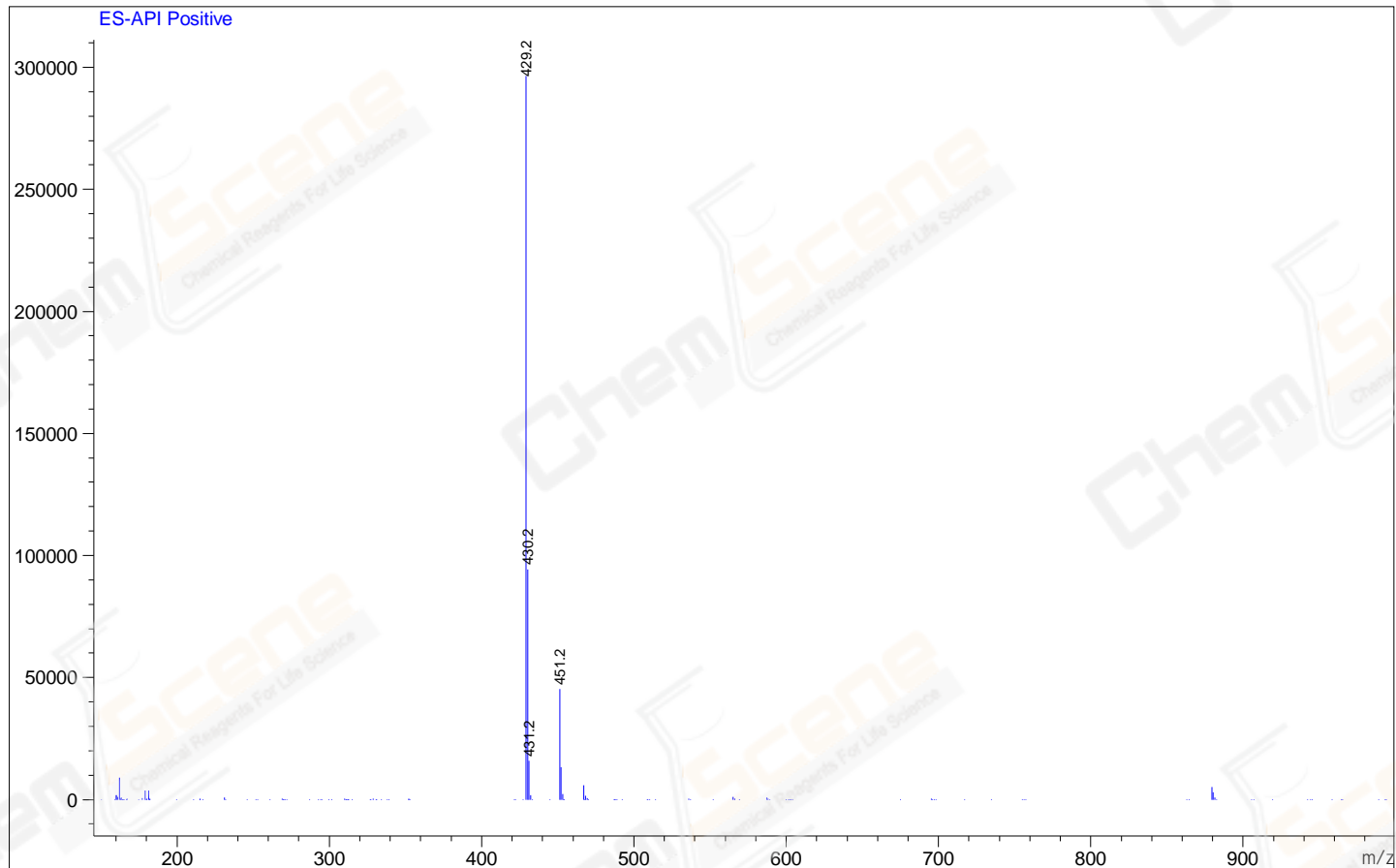
RetTim	Width	Area	Height	Area%
1.12	0.03	843.63	470.30	99.97
1.68	0.02	0.29	-0.02	0.03

Integration Results for MSD1 TIC, MS File

RetTim	Width	Area	Height	Area%
1.13	0.06	4818343.00	1285379.13	100.00

Ret. Time: 1.13

<<<< POSITIVE SPECTRA >>>>



*** End of Report ***