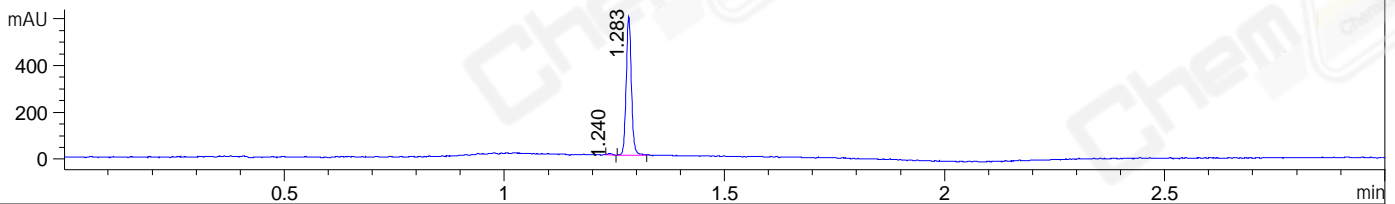
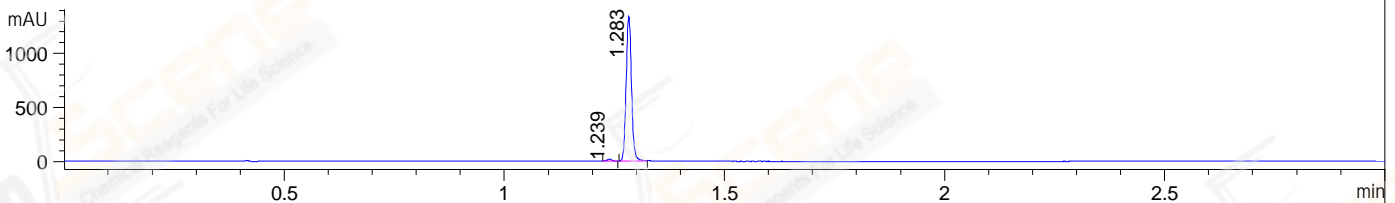


File ..DATA\2020\20200819\1076\BIZ2020-817-WLQ14.D Tgt Mass (CHM):
 Injection Date : 19 Aug 20 9:12 pm +0800 Seq. Line : 129
 Sample Name : BIZ2020-817-WLQ14 Location : P1-B-02
 Acq. Operator : zyj_1547 Inj : 1
 Spec. Reported : MS Integration Inj Volume : 1 ul
 Acq. Method : D:\Chem32\1\data\2020\20200819\1076\1-POS-3MIN.M
 Analysis Method : D:\CHEM32\1\DATA\2020\20200819\1076\1-POS-3MIN.M
 Catalog No : CS-7513
 Method Info : Mobile Phase: A: water(0.01%TFA) B:ACN(0.01%TFA)
 Gradient: 5% to 95%B within 1.3 min
 Flow Rate :1.8ml/min
 Column :SunFire C18, 4.6*50mm,3.5um A-RP-607
 Oven Temperature : 45C

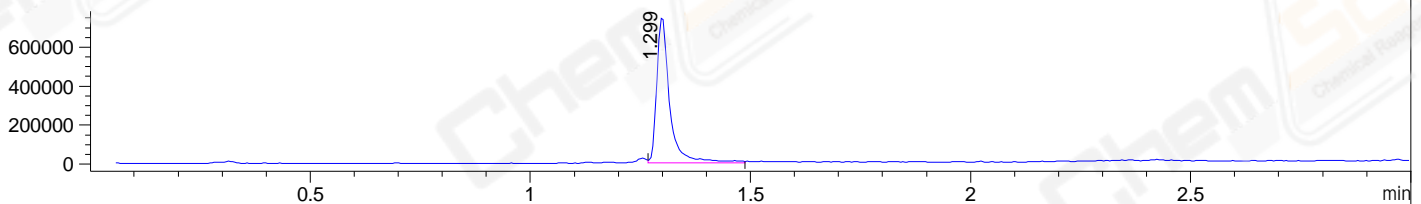
DAD1 B, Sig=214,4 Ref=off



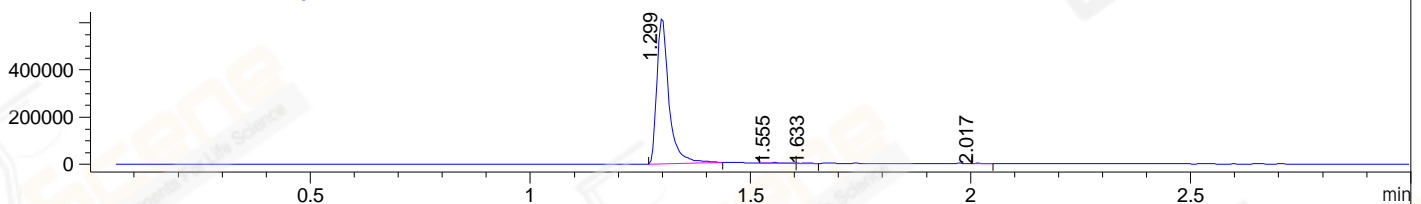
DAD1 C, Sig=254,4 Ref=off



MSD1 TIC, MS File ES-API, Pos, Scan, Frag: 70



Ion 266, MSD1 266, Target Mass 265 +H Positive, EIC=265.7:266.7



Integration Results for DAD1 B, Sig=214,4 Ref=off

| RetTim | Width | Area | Height | Area% | MS (+) |
|--------|-------|--------|--------|-------|--------|
| 1.24 | 0.01 | 5.09 | 6.96 | 1.03 | 252 |
| 1.28 | 0.01 | 488.38 | 593.44 | 98.97 | 266 |

Integration Results for DAD1 C, Sig=254,4 Ref=off

| RetTim | Width | Area | Height | Area% | MS (+) |
|--------|-------|---------|---------|-------|--------|
| 1.24 | 0.01 | 12.83 | 16.82 | 1.11 | 252 |
| 1.28 | 0.01 | 1140.00 | 1340.23 | 98.89 | 266 |

Integration Results for MSD1 TIC, MS File

| RetTim | Width | Area | Height | Area% | MS (+) |
|--------|-------|------------|-----------|--------|--------|
| 1.30 | 0.03 | 1541318.63 | 755735.38 | 100.00 | 266 |

Ret. Time: 1.30

<<<< POSITIVE SPECTRA >>>>

ES-API Positive

