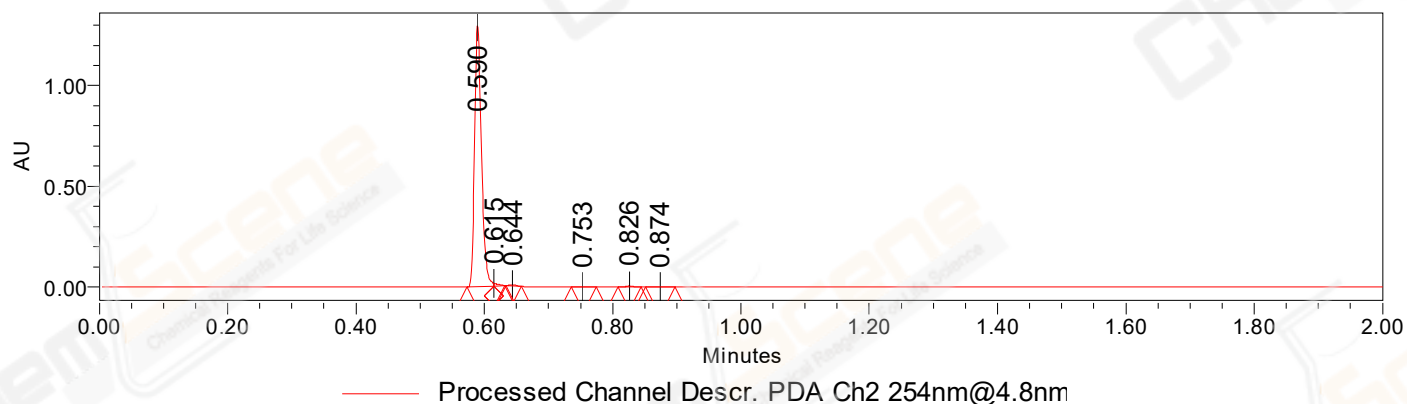


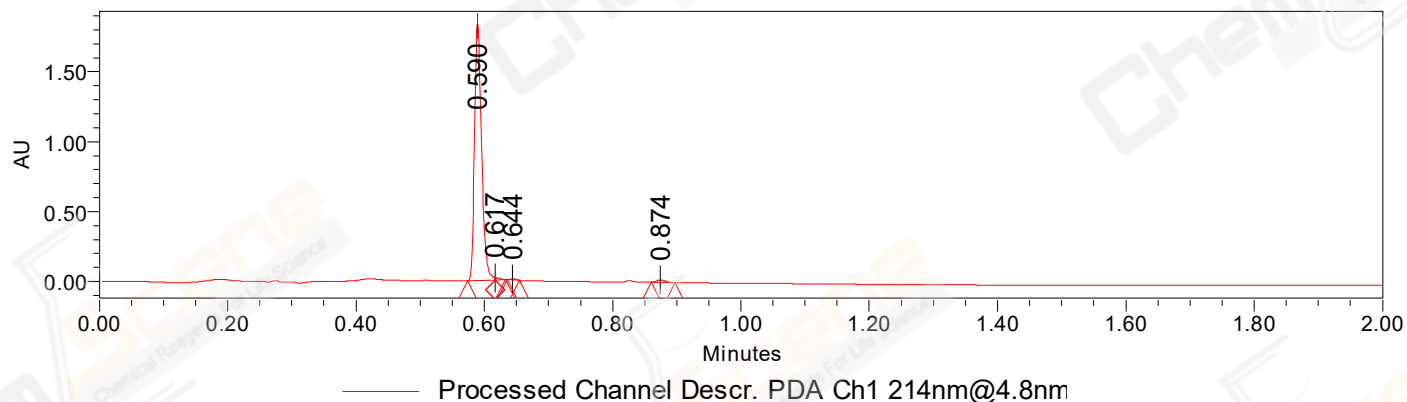
## SAMPLE INFORMATION

CAS NO.:	2109805-56-1	Acquired By:	LY
Sample information:		Date Acquired:	3/24/2023 9:06:56 AM CST
Vial:	1:D,3	Acq. Method Set:	1_POS_2MIN
Injection #:	1	Date Processed:	3/27/2023 11:00:57 AM CST,
Injection Volume:	0.50 ul	Processing Method:	PDA_01, MS_scan
Run Time:	2.8 Minutes	Channel Name:	PDA Ch1 214nm@4.8nm, MS TIC,
Sample Set Name:	20230323_1	Column Name:	A-RP-985

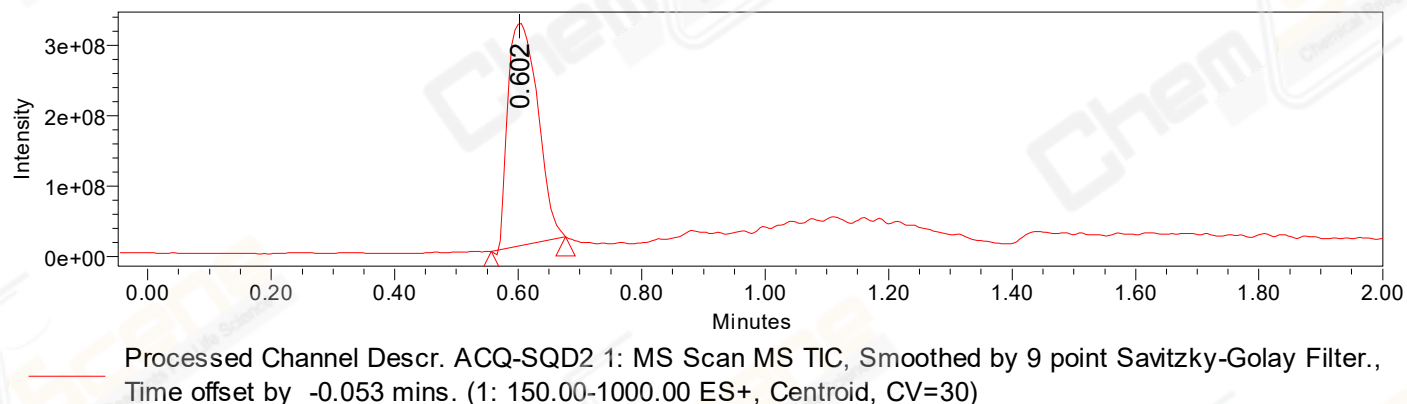
### Auto-Scaled Chromatogram



### Auto-Scaled Chromatogram



### Auto-Scaled Chromatogram



Peak Results  
Channel Name: PDA Ch2 254nm@4.8nm

	RT	Width (sec)	Area	Height	% Area	Base Peak (Combined) (m/z)	Channel Name
1	0.590	2.550	972047	1297769	98.01	151.00	PDA Ch2 254nm@4.8nm
2	0.615	1.000	6483	12806	0.65	151.11	PDA Ch2 254nm@4.8nm
3	0.644	1.450	4299	6174	0.43	242.26	PDA Ch2 254nm@4.8nm
4	0.753	2.400	979	1347	0.10	150.99	PDA Ch2 254nm@4.8nm
5	0.826	2.150	5030	6329	0.51	153.03	PDA Ch2 254nm@4.8nm
6	0.874	2.700	2926	3242	0.30	457.65	PDA Ch2 254nm@4.8nm

Peak Results  
Channel Name: PDA Ch1 214nm@4.8nm

	RT	Width (sec)	Area	Height	% Area	Base Peak (Combined) (m/z)	Channel Name
1	0.590	2.550	1407992	1838249	98.02	151.04	PDA Ch1 214nm@4.8nm
2	0.617	0.950	8168	16789	0.57	150.99	PDA Ch1 214nm@4.8nm
3	0.644	1.150	4431	6852	0.31	242.26	PDA Ch1 214nm@4.8nm
4	0.874	2.200	15830	18258	1.10	457.65	PDA Ch1 214nm@4.8nm

Peak Results  
Channel Name: MS TIC

	RT	Width (sec)	Area	Height	% Area	Base Peak (Combined) (m/z)	Channel Name
1	0.602	7.253	1060474049	316592790	100.00	242.22	MS TIC

Match Plot

