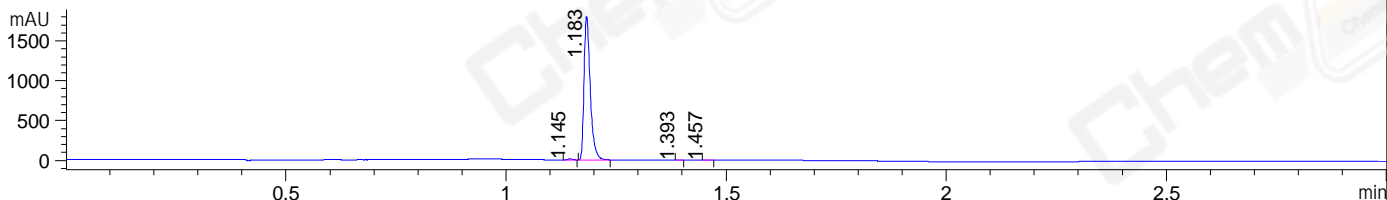
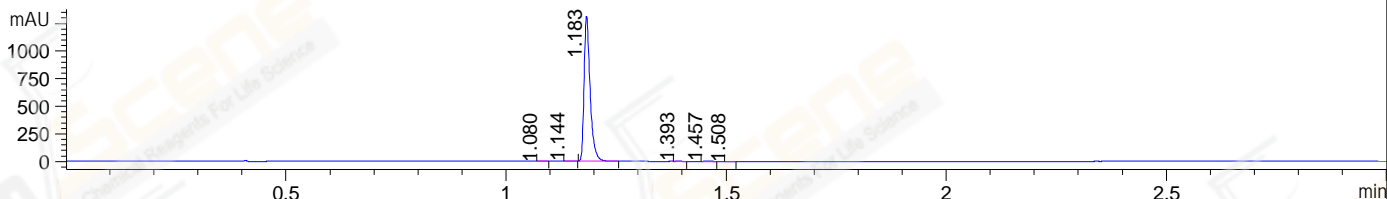


File ..\DATA\2020\20200909\1102\BIZ2020-907-SCH2.D Tgt Mass (CHM):
 Injection Date : 9 Sep 20 11:47 am +0800 Seq. Line : 30
 Sample Name : BIZ2020-907-SCH2 Location : P1-A-03
 Acq. Operator : zyj_1547 Inj : 1
 Spec. Reported : MS Integration Inj Volume : 1 ul
 Acq. Method : D:\Chem32\1\data\2020\20200909\1102\1-POS-3MIN.M
 Analysis Method : D:\CHEM32\1\DATA\2020\20200909\1102\1-POS-3MIN.M
 CAS NO. : 1670-87-7
 Method Info : Mobile Phase: A: water(0.01%TFA) B:ACN(0.01%TFA)
 Gradient: 5% to 95%B within 1.3 min
 Flow Rate :1.8ml/min
 Column :SunFire C18, 4.6*50mm,3.5um A-RP-624

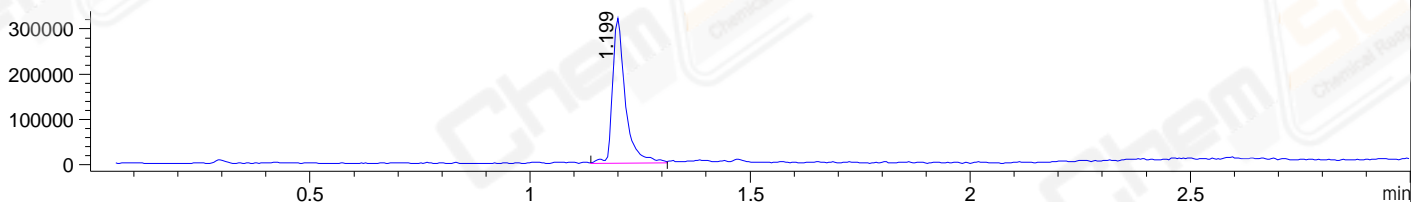
DAD1 B, Sig=214,4 Ref=off



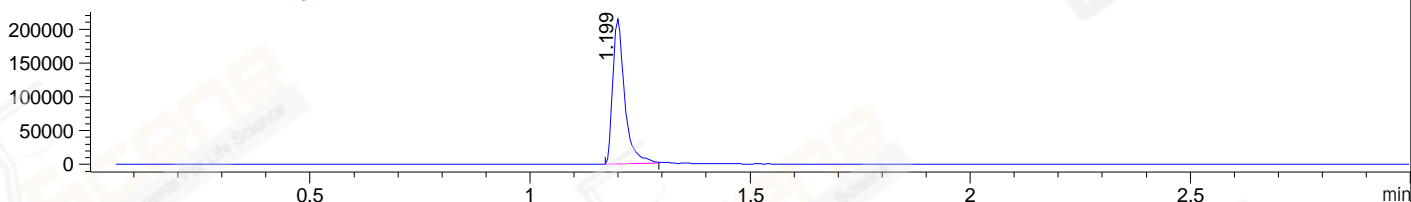
DAD1 C, Sig=254,4 Ref=off



MSD1 TIC, MS File ES-API, Pos, Scan, Frag: 70



Ion 161, MSD1 161, Target Mass 160 +H Positive, EIC=160.7:161.7



Integration Results for DAD1 B, Sig=214,4 Ref=off

RetTim	Width	Area	Height	Area%	MS(+)
1.14	0.01	9.94	12.07	0.56	136
1.18	0.02	1771.92	1803.59	99.17	161
1.39	0.01	2.03	2.95	0.11	189
1.46	0.01	2.90	3.51	0.16	347

Integration Results for DAD1 C, Sig=254,4 Ref=off

RetTim	Width	Area	Height	Area%	MS(+)
1.08	0.01	0.51	0.73	0.04	ND
1.14	0.01	1.28	1.55	0.10	136
1.18	0.02	1256.95	1317.58	99.47	161
1.39	0.01	0.62	0.96	0.05	189
1.46	0.01	3.65	4.36	0.29	347
1.51	0.01	0.60	0.77	0.05	ND

Integration Results for MSD1 TIC, MS File

RetTim	Width	Area	Height	Area%	MS(+)
--------	-------	------	--------	-------	-------

-----|-----|-----|-----|-----|-----|
1.20 0.03 651735.00 320715.13 100.00 161

Ret. Time: 1.20

<<<< POSITIVE SPECTRA >>>>

