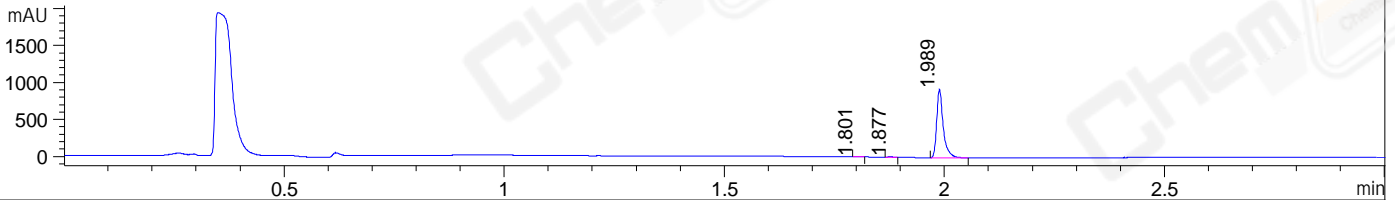
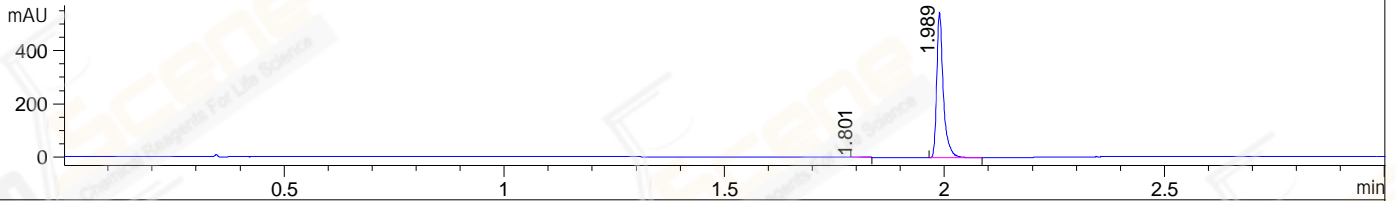


File ..\DATA\2020\20200914\1106\BIZ2020-910-WLQ6.D Tgt Mass (CHM):
 Injection Date : 14 Sep 20 12:10 pm +0800 Seq. Line : 40
 Sample Name : BIZ2020-910-WLQ6 Location : P1-A-07
 Acq. Operator : zyj_1547 Inj : 1
 Spec. Reported : MS Integration Inj Volume : 1 ul
 Acq. Method : D:\Chem32\1\data\2020\20200914\1106\1-POS-3MIN.M
 Analysis Method : D:\CHEM32\1\DATA\2020\20200914\1106\1-POS-3MIN.M
 Catalog No : CS-0019978
 Method Info : Mobile Phase: A: water(0.01%TFA) B:ACN(0.01%TFA)
 Gradient: 5% to 95%B within 1.3 min
 Flow Rate :1.8ml/min
 Column :SunFire C18, 4.6*50mm,3.5um A-RP-624

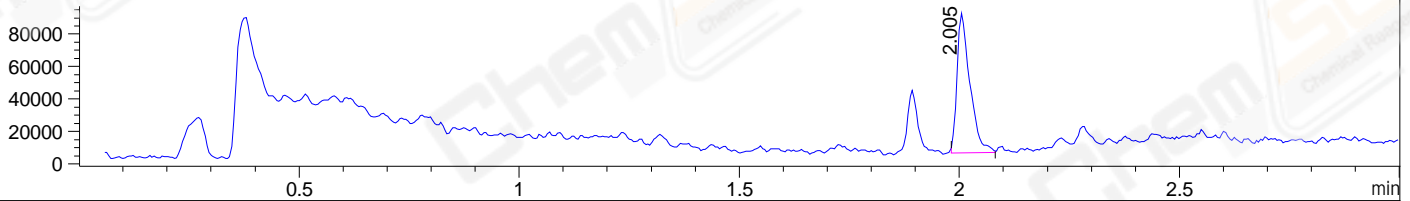
DAD1 B, Sig=214,4 Ref=off



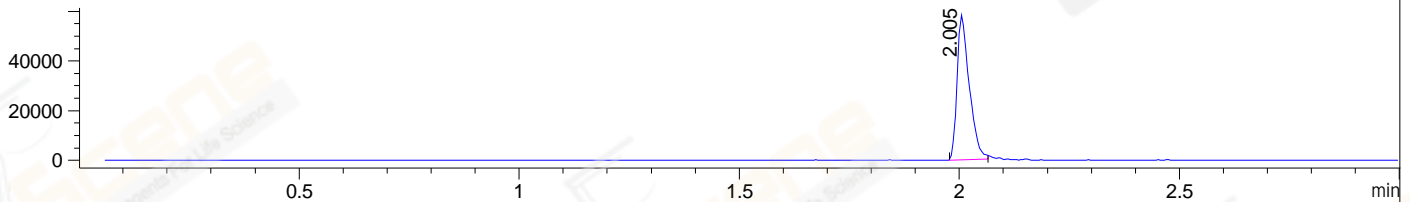
DAD1 C, Sig=254,4 Ref=off



MSD1 TIC, MS File ES-API, Pos, Scan, Frag: 70



Ion 584, MSD1 584, Target Mass 583 +H Positive, EIC=583.7:584.7



Integration Results for DAD1 B, Sig=214,4 Ref=off

| RetTim | Width | Area | Height | Area% | MS (+) |
|--------|-------|--------|--------|-------|--------|
| 1.80 | 0.01 | 1.48 | 1.76 | 0.15 | 157 |
| 1.88 | 0.01 | 3.58 | 4.33 | 0.37 | 288 |
| 1.99 | 0.02 | 961.25 | 924.08 | 99.48 | 584 |

Integration Results for DAD1 C, Sig=254,4 Ref=off

| RetTim | Width | Area | Height | Area% | MS (+) |
|--------|-------|--------|--------|-------|--------|
| 1.80 | 0.02 | 1.61 | 1.53 | 0.28 | 157 |
| 1.99 | 0.02 | 573.31 | 548.23 | 99.72 | 584 |

Integration Results for MSD1 TIC, MS File

| RetTim | Width | Area | Height | Area% | MS (+) |
|--------|-------|-----------|----------|--------|--------|
| 2.01 | 0.03 | 175413.13 | 86270.29 | 100.00 | 584 |

Ret. Time: 2.01

<<<< POSITIVE SPECTRA >>>>

ES-API Positive

