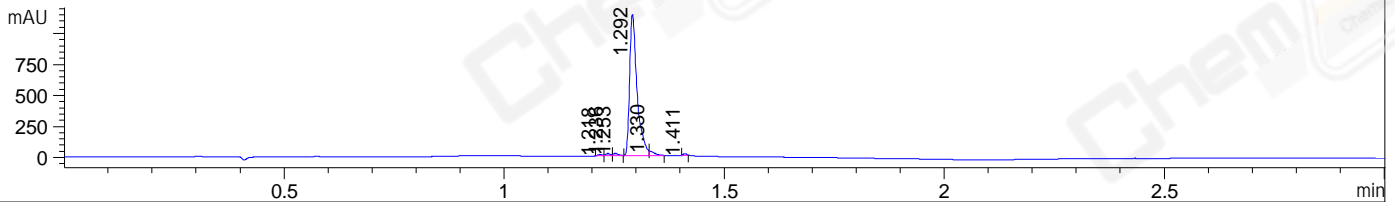
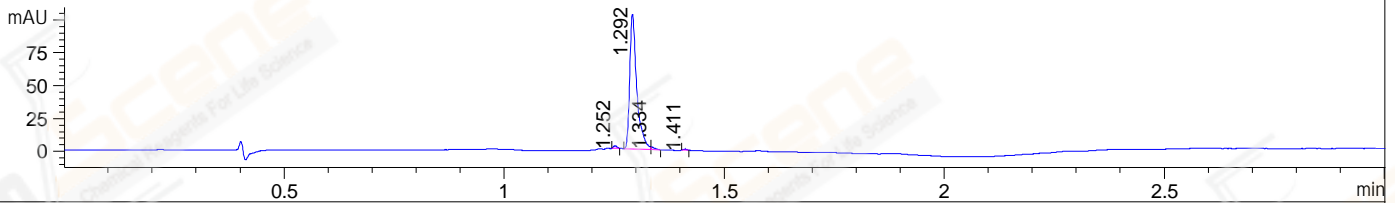


File ..ATA\2020\20201020\1130\BIZ2020-O17-WMX19-.D Tgt Mass (CHM):
 Injection Date : 20 Oct 20 4:40 pm +0800 Seq. Line : 88
 Sample Name : BIZ2020-O17-WMX19 Location : P1-A-03
 Acq. Operator : zyj_1547 Inj : 1
 Spec. Reported : MS Integration Inj Volume : 3 ul
 Acq. Method : D:\Chem32\1\data\2020\20201020\1130\1-POS-3MIN.M
 Analysis Method : D:\CHEM32\1\DATA\2020\20201020\1130\1-POS-3MIN.M
 Catalog No : CS-0028917
 Method Info : Mobile Phase: A: water(0.01%TFA) B:ACN(0.01%TFA)
 Gradient: 5% to 95%B within 1.3 min
 Flow Rate :1.8ml/min
 Column :SunFire C18, 4.6*50mm,3.5um A-RP-624

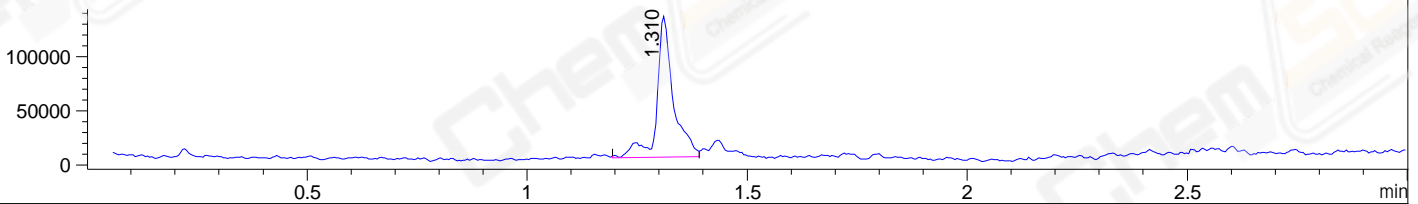
DAD1 B, Sig=214,4 Ref=off



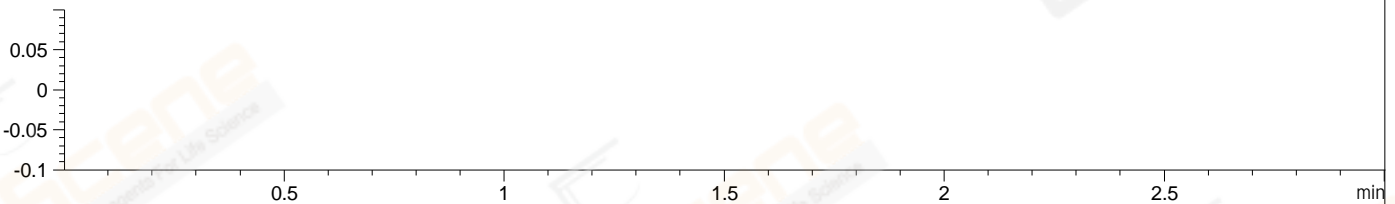
DAD1 C, Sig=254,4 Ref=off



MSD1 TIC, MS File ES-API, Pos, Scan, Frag: 70



Ion 1, MSD1 1, Target Mass 0 +H Positive, EIC=0.7:1.7



Integration Results for DAD1 B, Sig=214,4 Ref=off

RetTim	Width	Area	Height	Area%	MS (+)
1.22	0.01	7.64	10.42	0.54	157
1.24	0.01	13.72	17.65	0.97	554
1.25	0.01	13.55	17.32	0.96	157
1.29	0.02	1345.69	1139.96	95.06	476
1.33	0.01	27.87	36.99	1.97	476
1.41	0.01	7.08	12.95	0.50	735

Integration Results for DAD1 C, Sig=254,4 Ref=off

RetTim	Width	Area	Height	Area%	MS (+)
1.25	0.01	0.97	1.86	0.83	157
1.29	0.02	114.85	102.68	98.01	476
1.33	0.01	1.06	2.07	0.91	476
1.41	0.01	0.30	0.66	0.26	735

Integration Results for MSD1 TIC, MS File

RetTim	Width	Area	Height	Area%	MS (+)
--------	-------	------	--------	-------	--------

-----|-----|-----|-----|-----|-----|
1.31 0.04 341528.94 130404.96 100.00 476

Ret. Time: 1.31

<<<< POSITIVE SPECTRA >>>>

ES-API Positive

