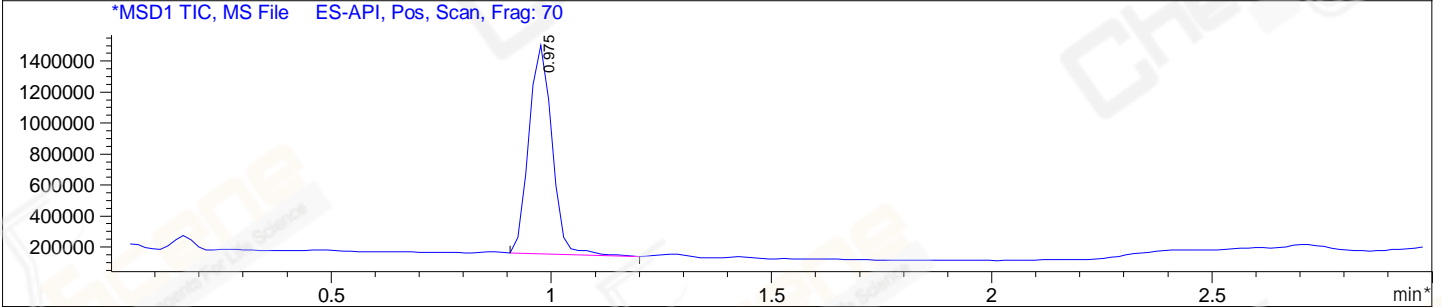
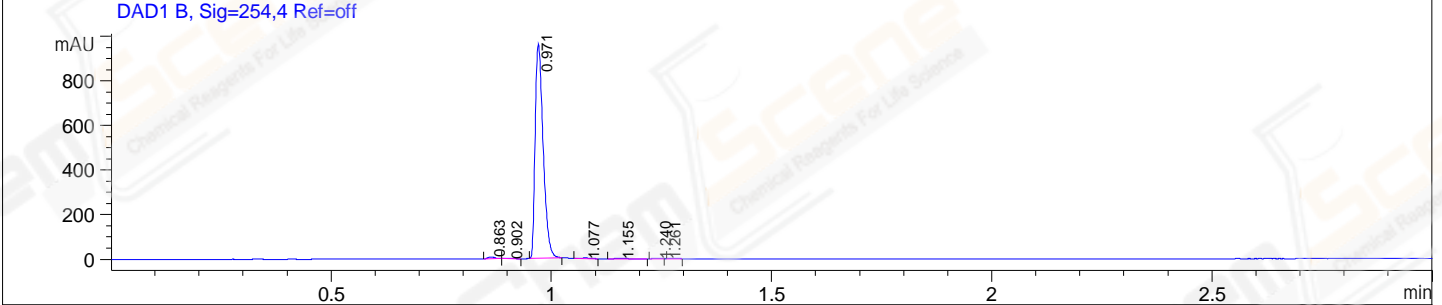
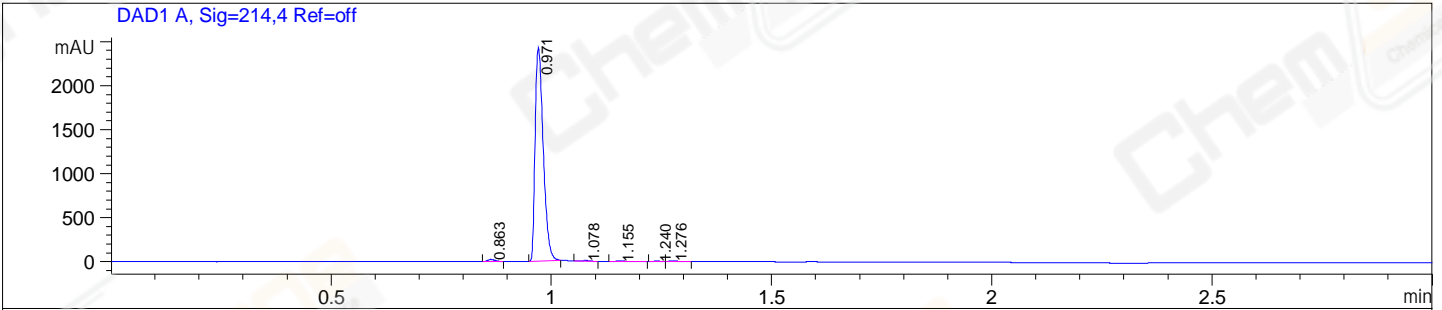


File E:\ChemStation\1\DATA\2023\2023-09\2023-09-21\CPK2023-921-84407-UPLC-MS-10-015365.D
 Injection Date : 21-Sep-23, 14:14:35 Tgt Mass(EZX) :
 Sample Name : CPK2023-921-84407 Location : P1-A-09
 Acq. Operator : LY_2278 Inj : 1
 Spec. Reported : MS Integration Inj Volume : 0.8 ul
 Acq. Method : E:\ChemStation\1\Methods\1-POS-UPLC3.0MIN(1.2)(150-1000).M
 Analysis Method : E:\CHEMSTATION\1\METHODS\1-POS-UPLC3.0MIN(1.2)(150-1000).M
 CAS NO. : 1926986-36-8 WalkUp method: '1-POS-3MIN' Project: CPK2023
 Method Info : Mobile Phase: A: water(0.01%TFA) B:ACN(0.01%TFA)
 Gradient: 5% to 95%B within 2.0 min
 Flow Rate :1.2ml/min
 Column :Shim-pack Scepter C18-120, 3.0*33mm,3um
 Oven Temperature : 45C



Integration Results for DAD1 A, Sig=214,4 Ref=off

RetTim	Width	Area	Height	Area%
0.86	0.02	24.62	23.35	0.78
0.97	0.02	3104.48	2425.62	98.21
1.08	0.02	9.32	7.46	0.29
1.16	0.03	8.72	5.34	0.28
1.24	0.02	5.21	4.62	0.16
1.28	0.02	8.75	7.23	0.28

Integration Results for DAD1 B, Sig=254,4 Ref=off

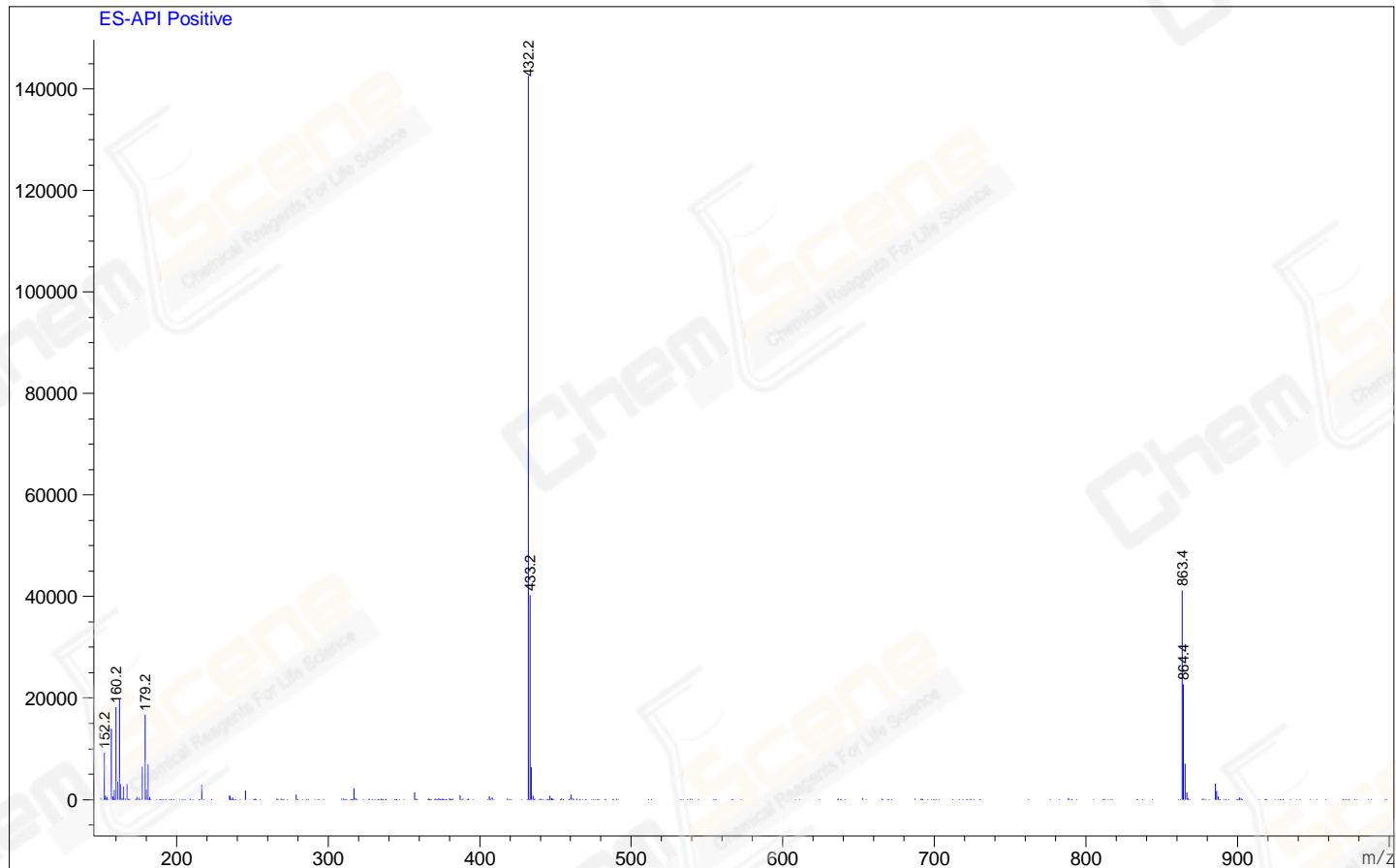
RetTim	Width	Area	Height	Area%
0.86	0.02	8.45	8.42	0.69
0.90	0.02	1.07	0.90	0.09
0.97	0.02	1211.50	962.72	98.24
1.08	0.02	3.25	2.55	0.26
1.15	0.02	3.38	2.08	0.27
1.24	0.02	2.34	2.06	0.19
1.26	0.02	3.20	0.21	0.26

Integration Results for MSD1 TIC, MS File

RetTim	Width	Area	Height	Area%
0.97	0.06	4905099.00	1346415.38	100.00

Ret. Time: 0.97

<<<< POSITIVE SPECTRA >>>>



*** End of Report ***