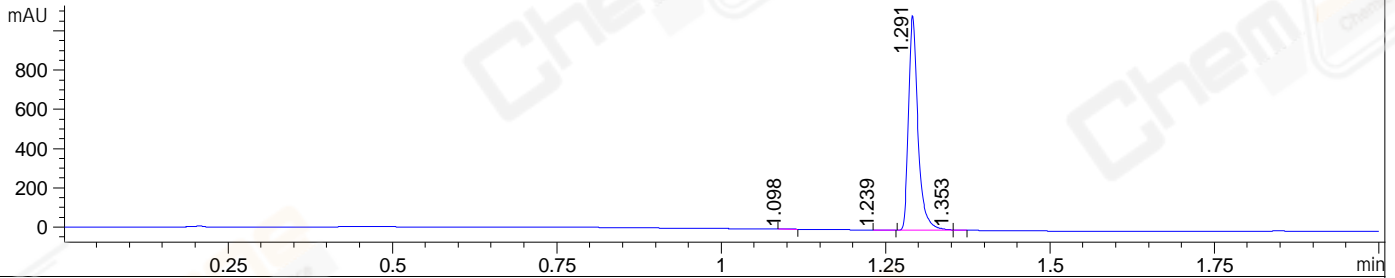
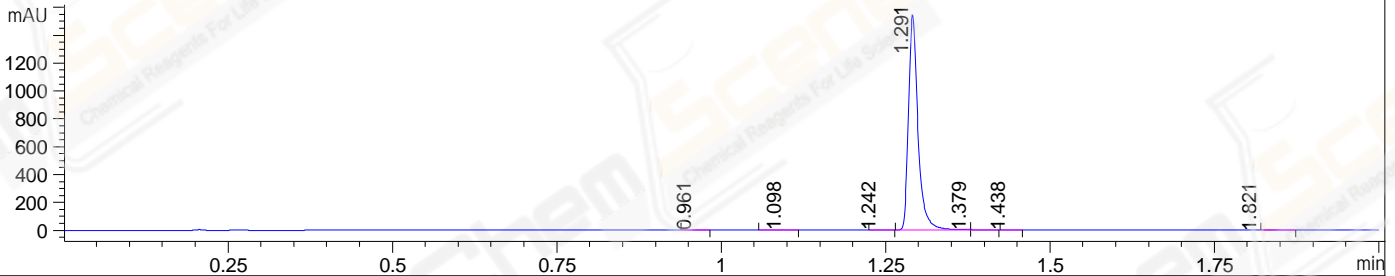


File ..04-13\CPK2023-413-84732-UPLC-MS-01-015884.D Tgt Mass (EZ):
 Injection Date : 13 Apr 23 11:03 am +0800 Seq. Line : 0
 Sample Name : CPK2023-413-84732 Location : P1-C-11
 Acq. Operator : LY_2278 Inj : 1
 Spec. Reported : MS Integration Inj Volume : 0.5 ul
 Acq. Method : D:\LCMS\Methods\1-POS-UPLC2.0MIN(0.8ML)-(150-1000).M
 Analysis Method : D:\LCMS\METHODS\1-POS-UPLC2.0MIN(0.8ML)-(150-1000).M
 CAS NO. : 1268524-70-4 Walkup method: '1-POS-2MIN' Project: CPK2023 Target:
 Method Info : Mobile Phase: A: water(0.01%TFA) B:ACN(0.01%TFA)
 Gradient: 5% to 95%B within 0.6 min
 Flow Rate : 0.8ml/min
 Column : Poroshell 120 EC- C18, 2.1*50mm,1.9um A-RP-517
 Oven Temperature : 45C

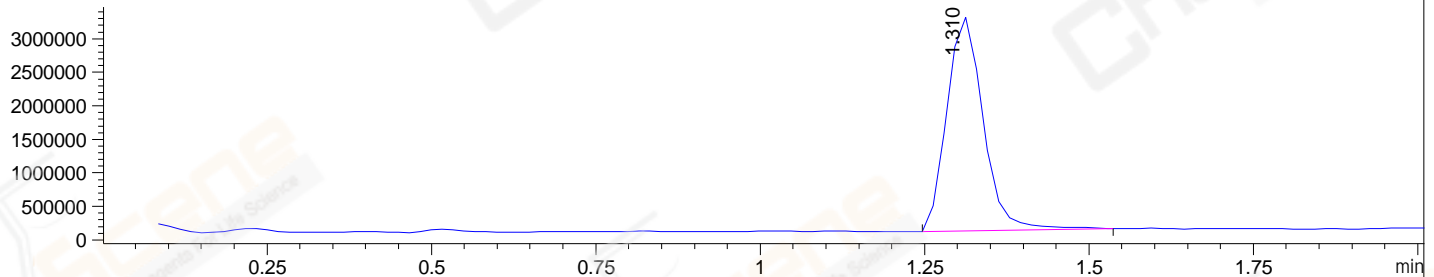
DAD1 A, Sig=214,4 Ref=off



DAD1 B, Sig=254,4 Ref=off



MSD1 TIC, MS File ES-API, Pos, Scan, Frag: 70



Integration Results for DAD1 A, Sig=214,4 Ref=off

RetTim	Width	Area	Height	Area%	MS (+)
1.10	0.02	1.11	1.18	0.10	161
1.24	0.02	0.43	0.34	0.04	457
1.29	0.02	1094.62	1095.95	99.77	457
1.35	0.01	0.97	1.77	0.09	161

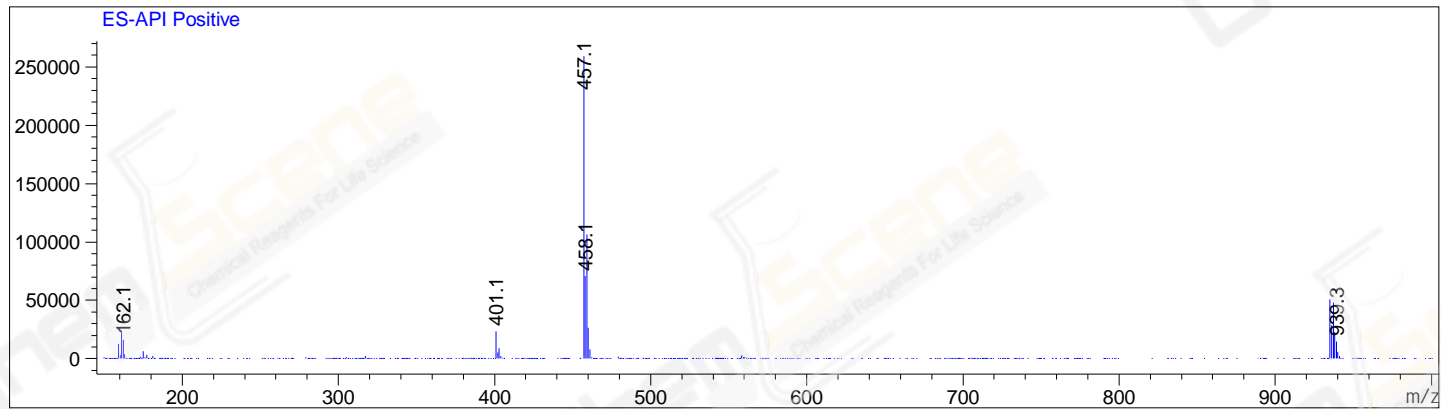
Integration Results for DAD1 B, Sig=254,4 Ref=off

RetTim	Width	Area	Height	Area%	MS (+)
0.96	0.02	0.52	0.41	0.03	161
1.10	0.02	1.41	1.14	0.09	161
1.24	0.02	0.58	0.57	0.04	457
1.29	0.02	1553.78	1547.39	99.61	457
1.38	0.02	2.21	1.91	0.14	161
1.44	0.02	0.71	0.73	0.05	161
1.82	0.02	0.59	-0.04	0.04	161

Integration Results for MSD1 TIC, MS File



Ret. Time: 1.31 <<<< POSITIVE SPECTRA >>>>



*** End of Report ***