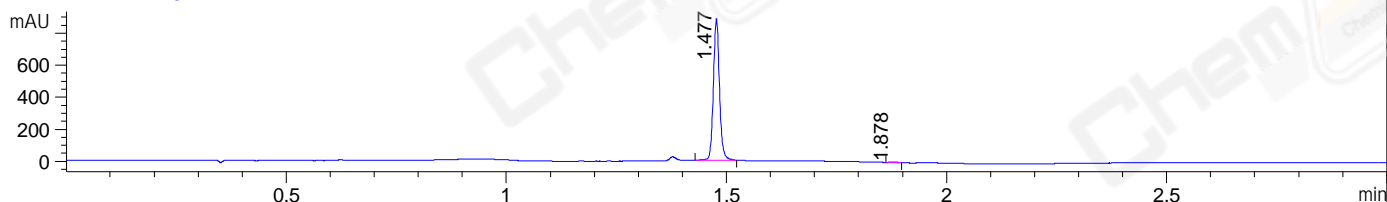
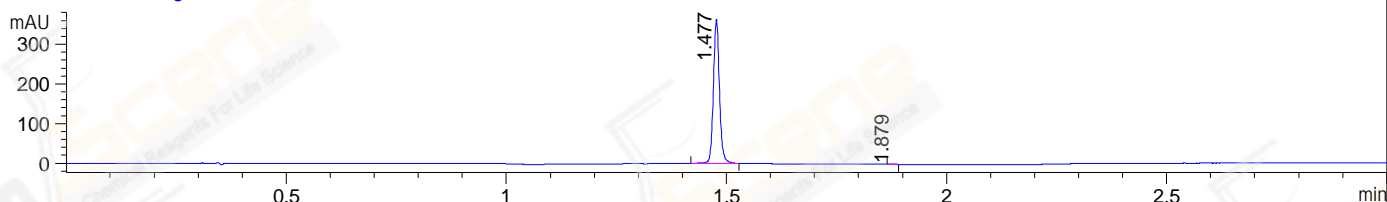


File ..DATA\2020\20201110\1149\BIZ2020-N09-SCH12.D Tgt Mass (CHM):
Injection Date : 10 Nov 20 10:01 pm +0800 Seq. Line : 147
Sample Name : BIZ2020-N09-SCH12 Location : P1-E-01
Acq. Operator : zyj_1547 Inj : 1
Spec. Reported : MS Integration Inj Volume : 1 ul
Acq. Method : D:\Chem32\1\data\2020\20201110\1149\1-POS-3MIN.M
Analysis Method : D:\CHEM32\1\DATA\2020\20201110\1149\1-POS-3MIN.M
CAS NO. : 140405-36-3
Method Info : Mobile Phase: A: water(0.01%TFA) B:ACN(0.01%TFA)
Gradient: 5% to 95%B within 1.3 min
Flow Rate :1.8ml/min
Column :SunFire C18, 4.6*50mm,3.5um A-RP-698

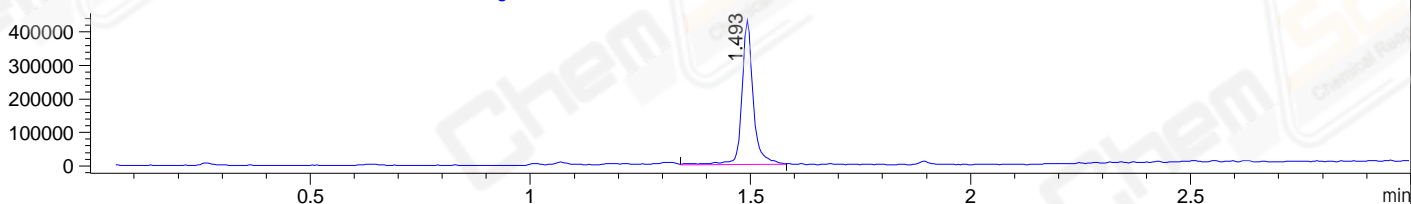
DAD1 B, Sig=214,4 Ref=off



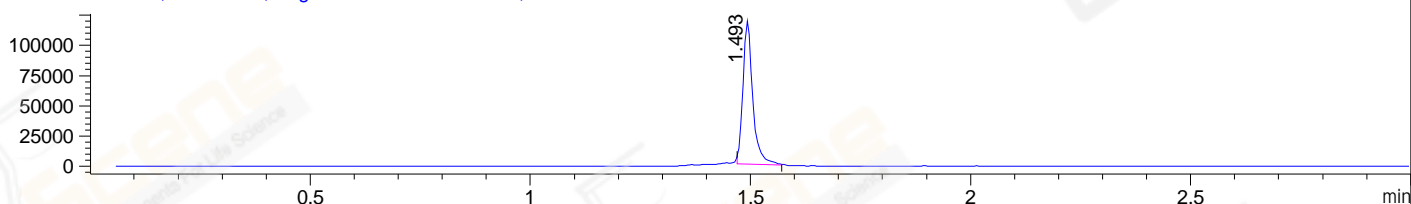
DAD1 C, Sig=254,4 Ref=off



MSD1 TIC, MS File ES-API, Pos, Scan, Frag: 70



Ion 313, MSD1 313, Target Mass 312 +H Positive, EIC=312.7:313.7



Integration Results for DAD1 B, Sig=214,4 Ref=off

RetTim	Width	Area	Height	Area%	MS (+)
1.48	0.02	850.02	887.66	99.56	157
1.88	0.01	3.77	4.01	0.44	194

Integration Results for DAD1 C, Sig=254,4 Ref=off

RetTim	Width	Area	Height	Area%	MS (+)
1.48	0.02	349.39	365.15	99.79	157
1.88	0.02	0.75	0.79	0.21	194

Integration Results for MSD1 TIC, MS File

RetTim	Width	Area	Height	Area%	MS (+)
1.49	0.03	775406.56	431521.03	100.00	157

Ret. Time: 1.49

<<<< POSITIVE SPECTRA >>>>

ES-API Positive

