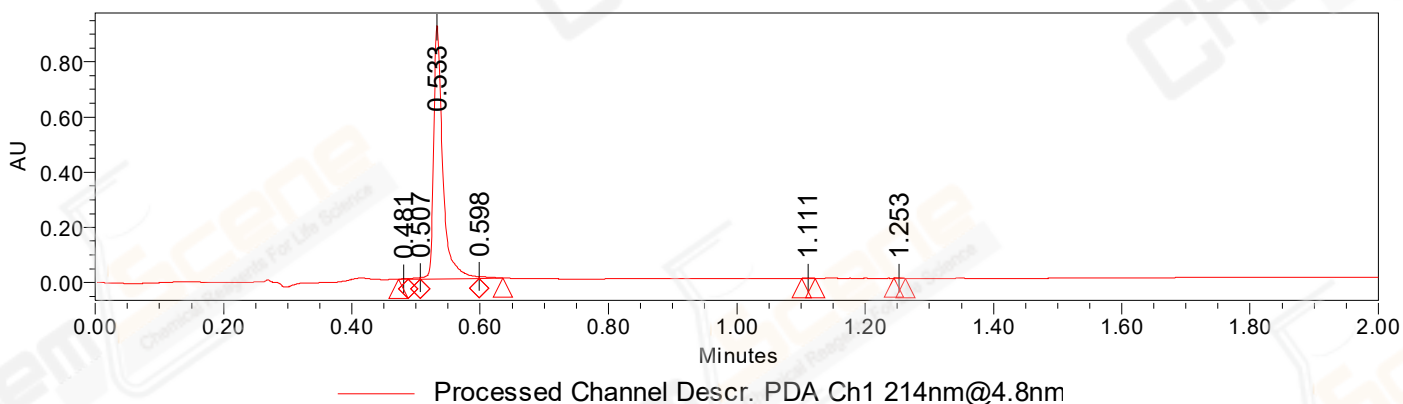


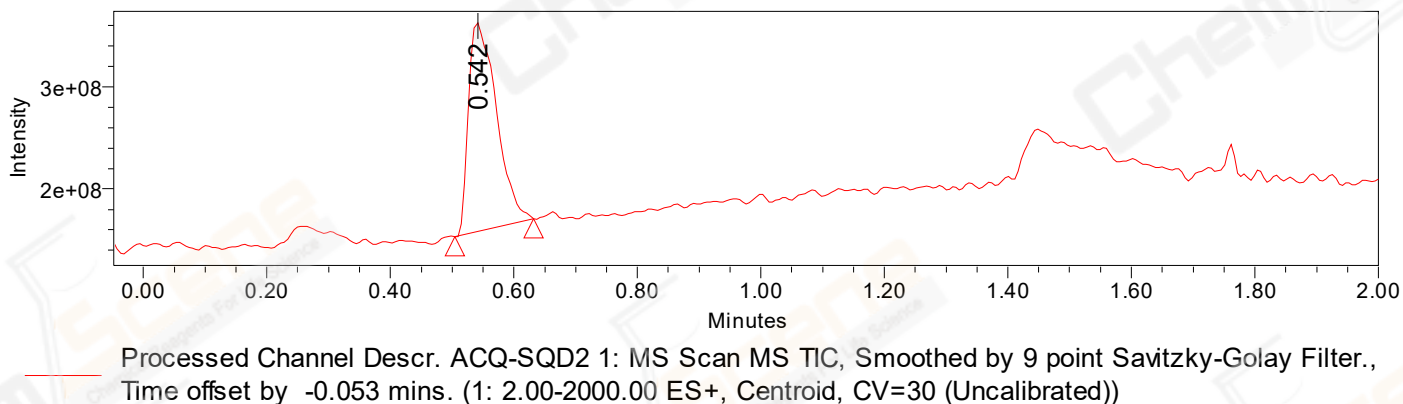
SAMPLE INFORMATION

CAS NO.:	80448-90-4	Acquired By:	LY
Sample information:		Date Acquired:	10/18/2022 1:34:14 PM CST
Vial:	2:A,5	Acq. Method Set:	1_POS_2MIN_2_2000
Injection #:	1	Date Processed:	10/18/2022 2:02:31 PM CST,
Injection Volume:	1.50 ul	Processing Method:	PDA_01, MS_scan
Run Time:	2.8 Minutes	Channel Name:	PDA Ch1 214nm@4.8nm, MS TIC
Sample Set Name:	20221018	Column Name:	A-RP-985

Auto-Scaled Chromatogram



Auto-Scaled Chromatogram



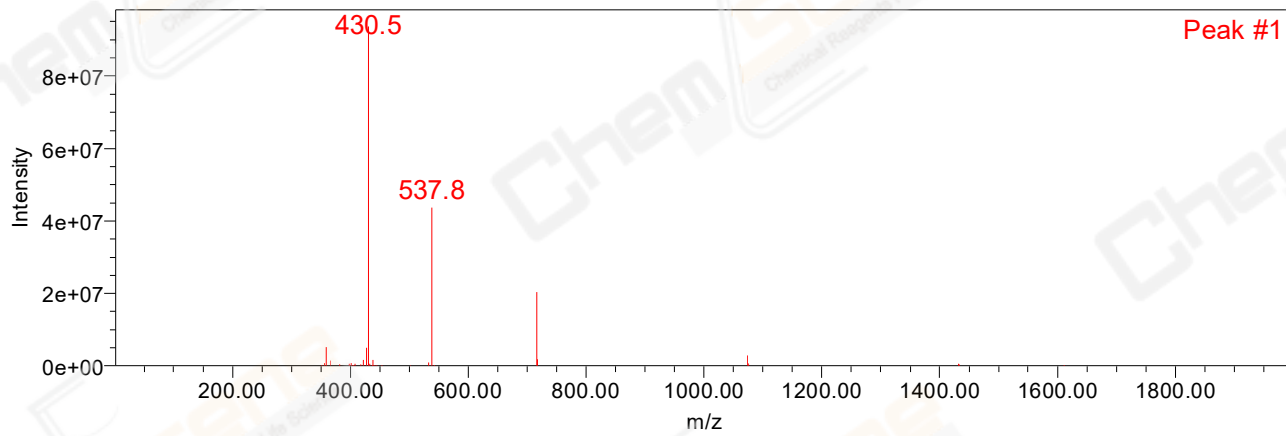
Peak Results
Channel Name: PDA Ch1 214nm@4.8nm

	RT	Width (sec)	Area	Height	% Area	Base Peak (Combined) (m/z)	Channel Name
1	0.481	0.900	1106	1761	0.12	59.93	PDA Ch1 214nm@4.8nm
2	0.507	1.150	3473	4721	0.38	59.93	PDA Ch1 214nm@4.8nm
3	0.533	5.500	905812	918843	98.59	60.00	PDA Ch1 214nm@4.8nm
4	0.598	2.200	7214	6607	0.79	430.52	PDA Ch1 214nm@4.8nm
5	1.111	1.250	753	1178	0.08	42.99	PDA Ch1 214nm@4.8nm
6	1.253	1.050	405	738	0.04	43.04	PDA Ch1 214nm@4.8nm

Peak Results
Channel Name: MS TIC

	RT	Width (sec)	Area	Height	% Area	Base Peak (Combined) (m/z)	Channel Name
1	0.542	7.640	642571874	204306958	100.00	430.51	MS TIC

Match Plot



Retention Time 0.542 Channel Name MS TIC