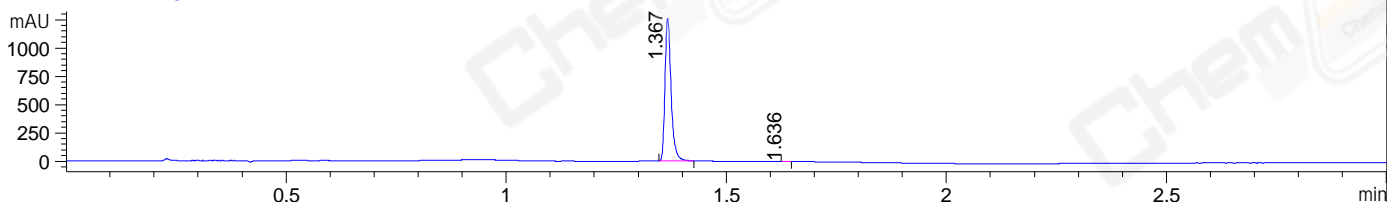
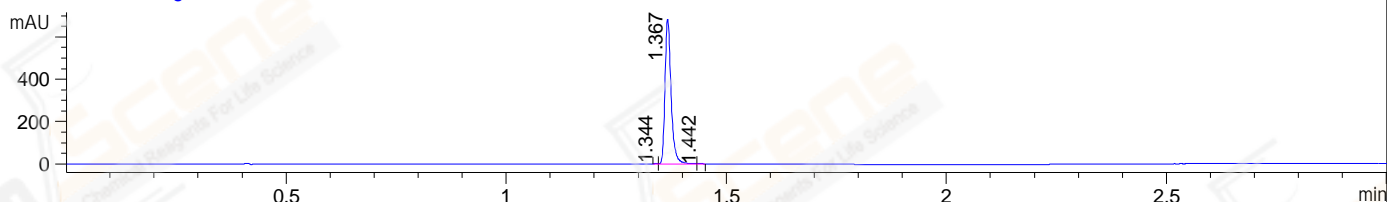


File ..\DATA\2020\20201120\1160\BIZ2020-N19-SCH2.D Tgt Mass (CHM):  
 Injection Date : 20 Nov 20 11:35 pm +0800 Seq. Line : 155  
 Sample Name : BIZ2020-N19-SCH2 Location : P1-A-02  
 Acq. Operator : zyj\_1547 Inj : 1  
 Spec. Reported : MS Integration Inj Volume : 1 ul  
 Acq. Method : D:\Chem32\1\data\2020\20201120\1160\1-POS-3MIN.M  
 Analysis Method : D:\CHEM32\1\DATA\2020\20201120\1160\1-POS-3MIN.M  
 CAS NO. : 1817628-40-2  
 Method Info : Mobile Phase: A: water(0.01%TFA) B:ACN(0.01%TFA)  
 Gradient: 5% to 95%B within 1.3 min  
 Flow Rate :1.8ml/min  
 Column :SunFire C18, 4.6\*50mm,3.5um A-RP-698

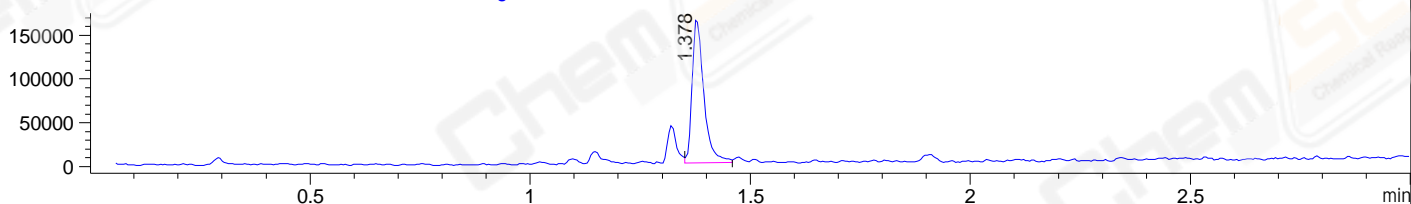
DAD1 B, Sig=214,4 Ref=off



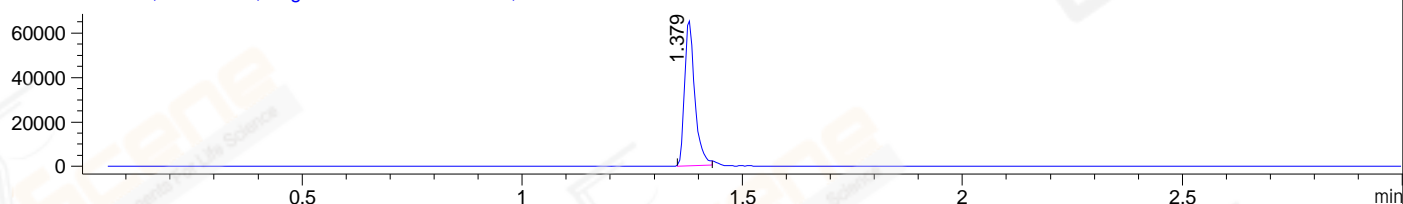
DAD1 C, Sig=254,4 Ref=off



MSD1 TIC, MS File ES-API, Pos, Scan, Frag: 70



Ion 348, MSD1 348, Target Mass 347 +H Positive, EIC=347.7:348.7



Integration Results for DAD1 B, Sig=214,4 Ref=off

RetTim	Width	Area	Height	Area%	MS(+)
1.37	0.02	1210.78	1260.34	99.83	348
1.64	0.01	2.10	2.57	0.17	ND

Integration Results for DAD1 C, Sig=254,4 Ref=off

RetTim	Width	Area	Height	Area%	MS(+)
1.34	0.01	0.53	1.00	0.08	357
1.37	0.02	652.51	684.08	99.82	348
1.44	0.01	0.66	0.83	0.10	348

Integration Results for MSD1 TIC, MS File

RetTim	Width	Area	Height	Area%	MS(+)
1.38	0.03	305371.56	166454.19	100.00	348

Ret. Time: 1.38

<<<< POSITIVE SPECTRA >>>>

ES-API Positive

