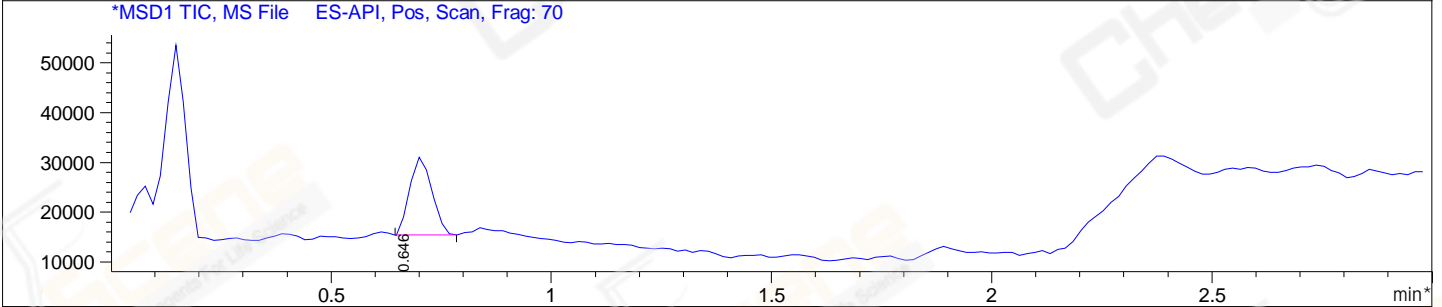
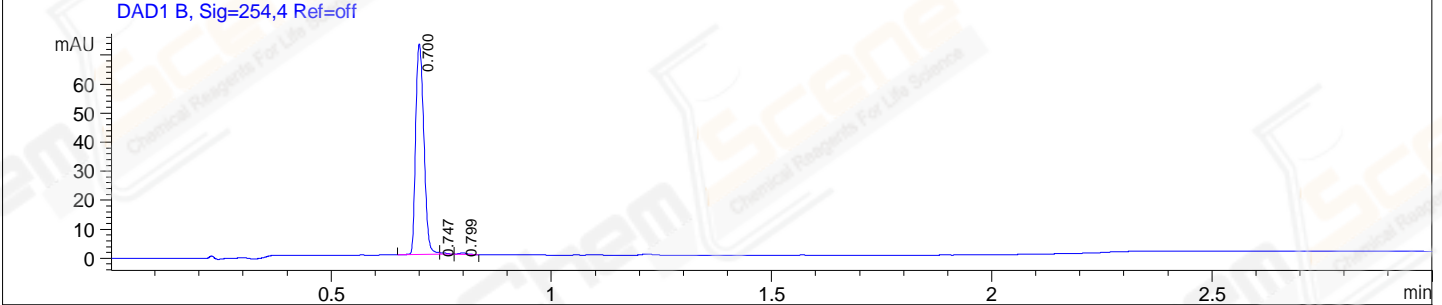
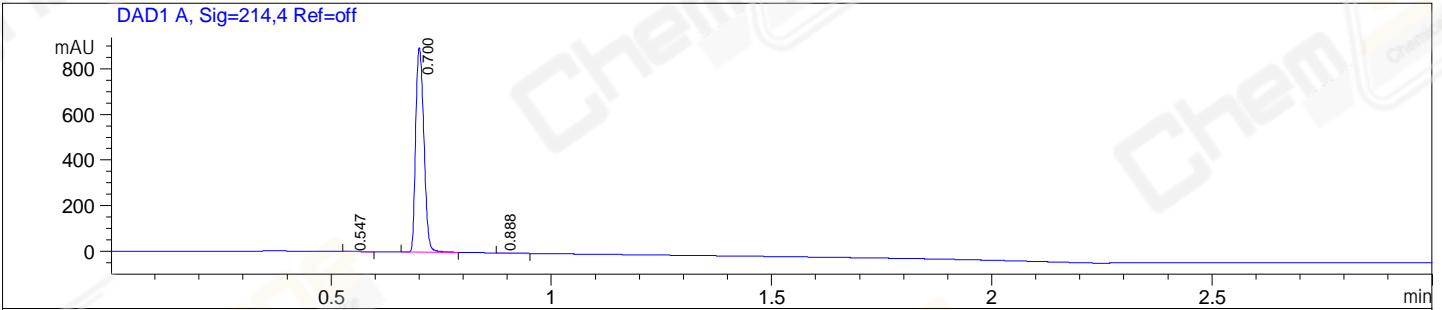


File E:\ChemStation\1\DATA\2024\2024-01\2024-01-04\CPK2024-104-86606-UPLC-MS-10-023848.D  
 Injection Date : 04-Jan-24, 16:18:15 Tgt Mass(EZX) :  
 Sample Name : CPK2024-104-86606 Location : P1-B-09  
 Acq. Operator : LY\_2278 Inj : 1  
 Spec. Reported : MS Integration Inj Volume : 0.2 ul  
 Acq. Method : E:\ChemStation\1\Methods\1-POS-UPLC3.0MIN(1.2)(150-1000).M  
 Analysis Method : E:\CHEMSTATION\1\METHODS\1-POS-UPLC3.0MIN(1.2)(150-1000).M  
 CAS NO. : 4233-96-9 WalkUp method: '1-POS-3MIN' Project: CPK2024  
 Method Info : Mobile Phase: A: water(0.01%TFA) B:ACN(0.01%TFA)  
 Gradient: 5% to 95%B within 2.0 min  
 Flow Rate :1.2ml/min  
 Column :Shim-pack Scepter C18-120, 3.0\*33mm,3um  
 Oven Temperature : 45C



Integration Results for DAD1 A, Sig=214,4 Ref=off

RetTim	Width	Area	Height	Area%
0.55	0.04	1.66	0.60	0.14
0.70	0.02	1154.54	896.58	99.75
0.89	0.04	1.18	0.45	0.10

Integration Results for DAD1 B, Sig=254,4 Ref=off

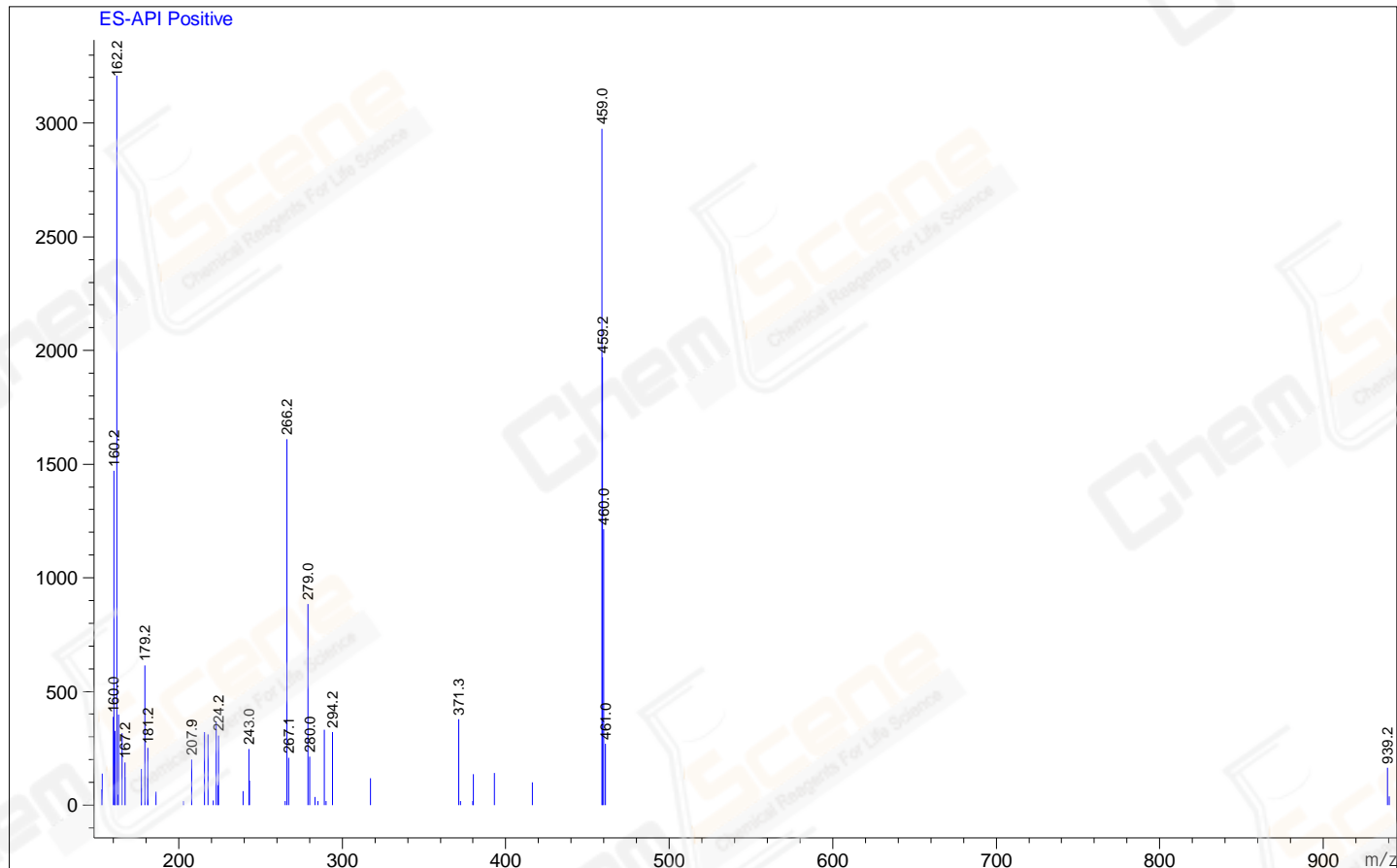
RetTim	Width	Area	Height	Area%
0.70	0.02	93.76	72.56	98.76
0.75	0.02	0.58	0.61	0.61
0.80	0.02	0.60	0.48	0.63

Integration Results for MSD1 TIC, MS File

RetTim	Width	Area	Height	Area%
0.65	0.06	54929.95	16.34	100.00

Ret. Time: 0.65

&lt;&lt;&lt;&lt; POSITIVE SPECTRA &gt;&gt;&gt;&gt;



\*\*\* End of Report \*\*\*