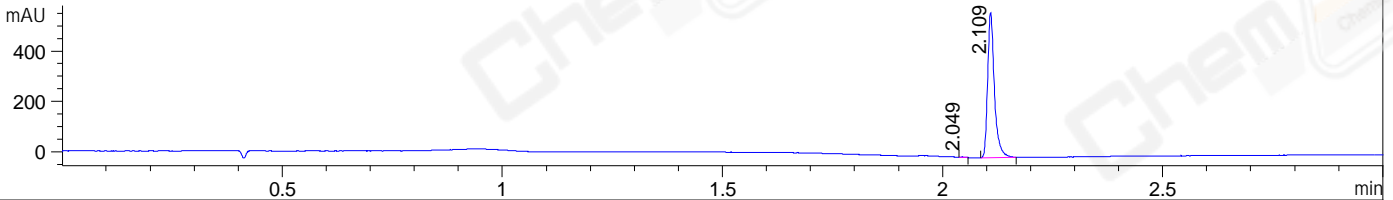
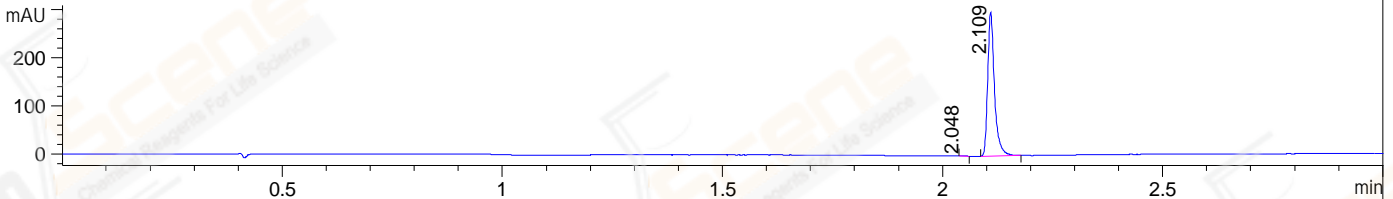


File ..DATA\2020\20201202\1181\BIZ2020-D01-WMX10.D Tgt Mass (CHM):
Injection Date : 2 Dec 20 2:12 pm +0800 Seq. Line : 67
Sample Name : BIZ2020-D01-WMX10 Location : P1-A-04
Acq. Operator : zyj_1547 Inj : 1
Spec. Reported : MS Integration Inj Volume : 1 ul
Acq. Method : D:\Chem32\1\data\2020\20201202\1181\1-POS-3MIN.M
Analysis Method : D:\CHEM32\1\DATA\2020\20201202\1181\1-POS-3MIN.M
CAS NO. : 939681-36-4
Method Info : Mobile Phase: A: water(0.01%TFA) B:ACN(0.01%TFA)
Gradient: 5% to 95%B within 1.3 min
Flow Rate :1.8ml/min
Column :SunFire C18, 4.6*50mm,3.5um A-RP-698

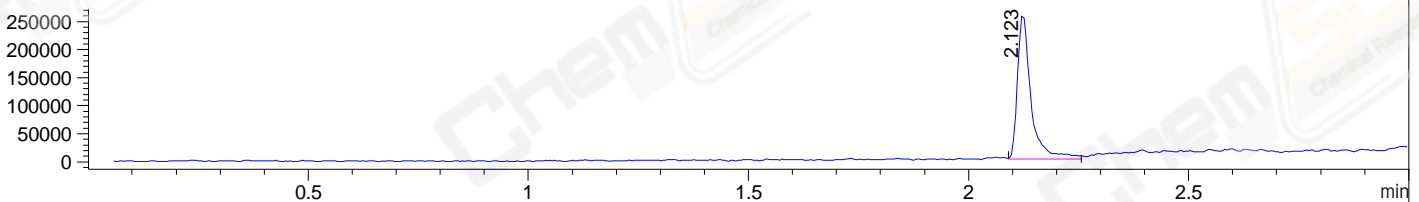
DAD1 B, Sig=214,4 Ref=off



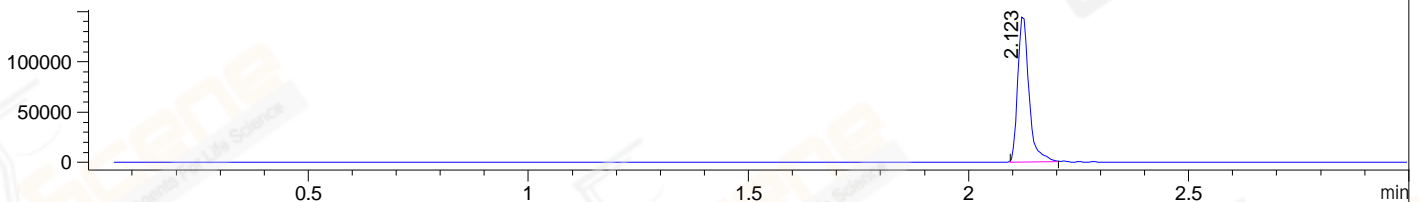
DAD1 C, Sig=254,4 Ref=off



MSD1 TIC, MS File ES-API, Pos, Scan, Frag: 70



Ion 384, MSD1 384, Target Mass 383 +H Positive, EIC=383.7:384.7



Integration Results for DAD1 B, Sig=214,4 Ref=off

RetTim	Width	Area	Height	Area%	MS (+)
2.05	0.01	0.98	1.35	0.16	ND
2.11	0.02	616.16	576.29	99.84	384

Integration Results for DAD1 C, Sig=254,4 Ref=off

RetTim	Width	Area	Height	Area%	MS (+)
2.05	0.01	0.57	0.75	0.18	ND
2.11	0.02	319.24	297.96	99.82	384

Integration Results for MSD1 TIC, MS File

RetTim	Width	Area	Height	Area%	MS (+)
2.12	0.03	553895.06	258691.52	100.00	384

Ret. Time: 2.12

<<<< POSITIVE SPECTRA >>>>

ES-API Positive

