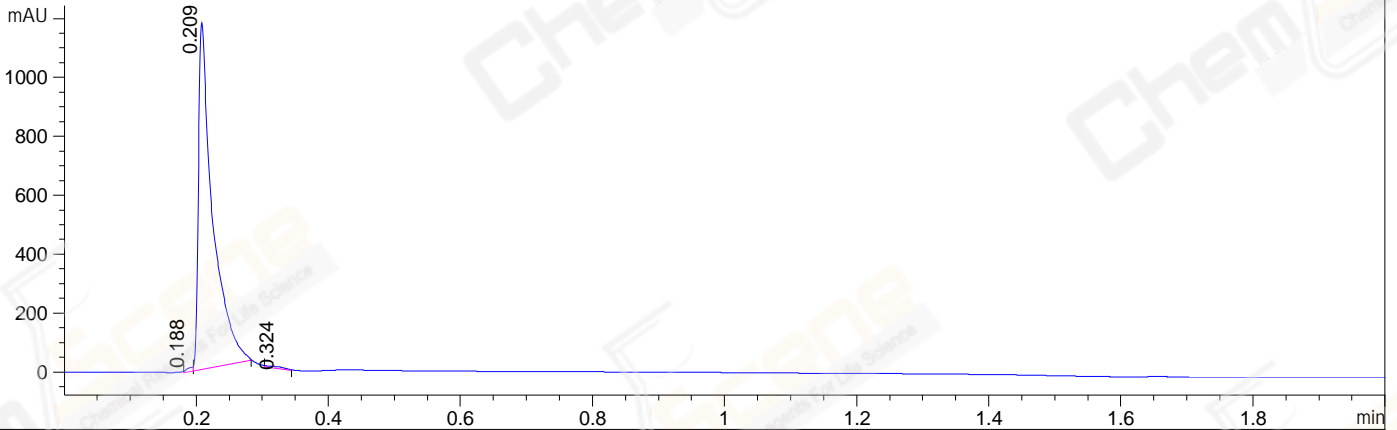
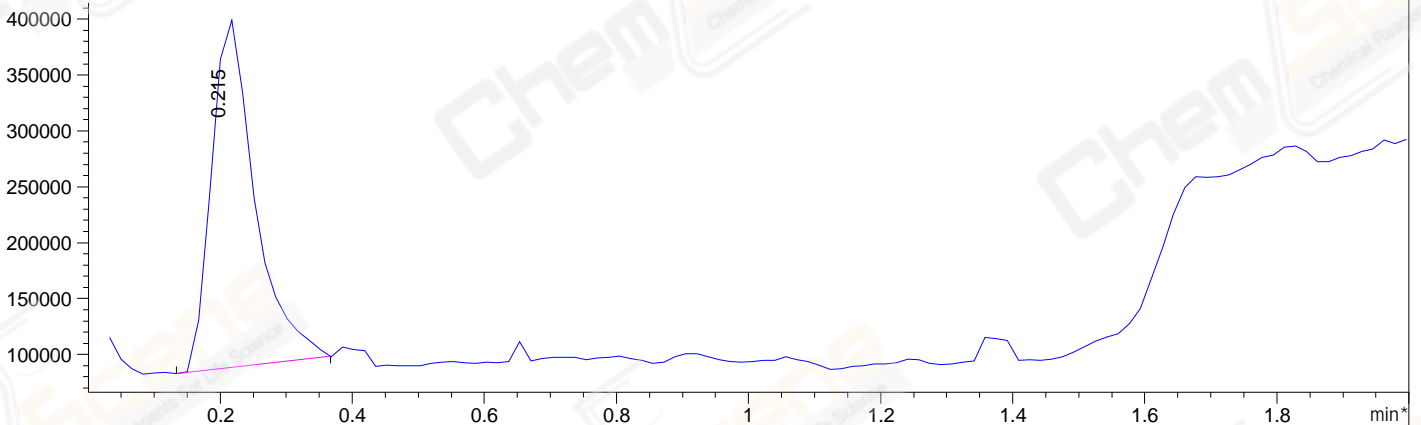


File ..02-07\CPK2023-206-89283-UPLC-MS-03-051038.D Tgt Mass (EZ):
 Injection Date : 07-Feb-23, 11:13:47 Seq. Line : 0
 Sample Name : CPK2023-206-89283 Location : P1-D-04
 Acq. Operator : LiYong Inj : 1
 Spec. Reported : MS Integration Inj Volume : 0.5 ul
 Acq. Method : E:\Chem32\1\Methods\1-POS-UPLC2.0MIN(0.8)(100-1000).M
 Analysis Method : E:\CHEM32\1\METHODS\1-POS-UPLC2.0MIN(0.8)(100-1000).M
 CAS NO. : 1185166-01-1 WalkUp method: '1-POS-2MIN(100-1000)' Project: CPK2023
 Method Info : Mobile Phase: A: water(0.01%TFA) B:ACN(0.01%TFA)
 Gradient: 5% to 95%B within 1.3 min
 Flow Rate : 0.8ml/min
 Column : Poroshell 120 EC- C18, 2.1*50mm,1.9um
 Oven Temperature : 45C

DAD1 A, Sig=214,4 Ref=off



*MSD1 TIC, MS File ES-API, Pos, Scan, Frag: 70



Integration Results for DAD1 A, Sig=214,4 Ref=off

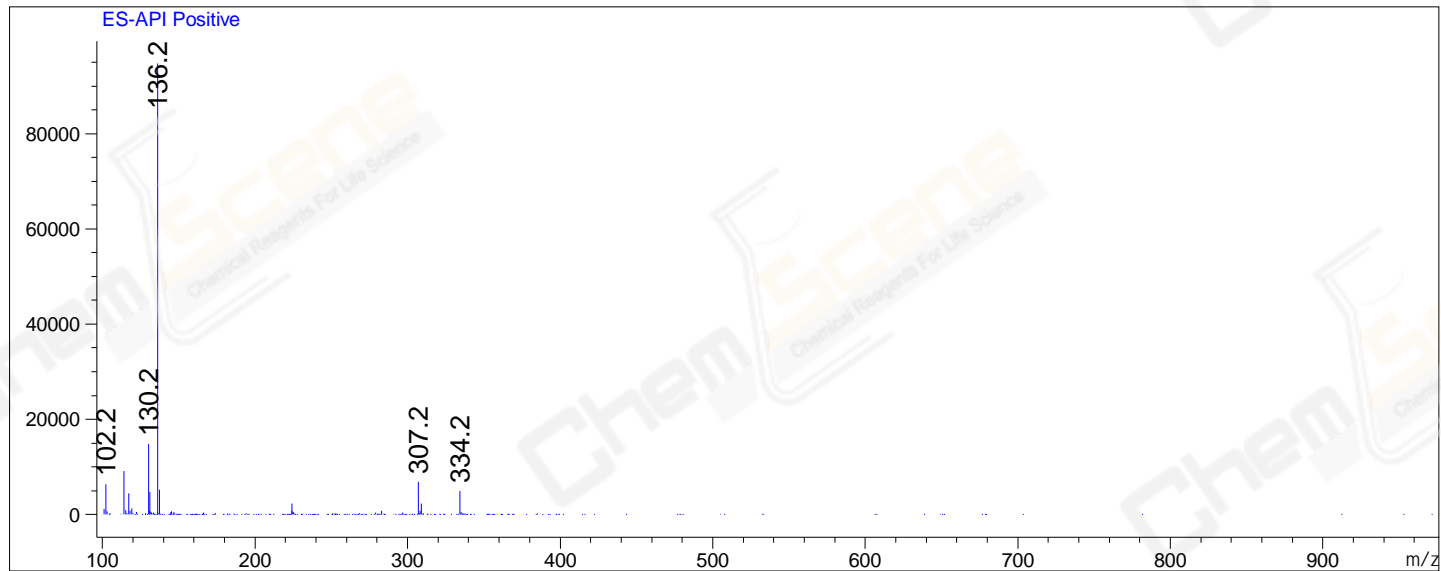
RetTim	Width	Area	Height	Area%	MS(+)
0.19	0.01	9.85	13.67	0.55	136
0.21	0.02	1772.10	1184.16	98.79	136
0.32	0.03	11.81	6.40	0.66	136

Integration Results for MSD1 TIC, MS File

RetTim	Width	Area	Height	Area%	MS(+)
0.22	0.07	1426751.38	311913.44	100.00	136

Ret. Time: 0.22

<<<< POSITIVE SPECTRA >>>>



*** End of Report ***