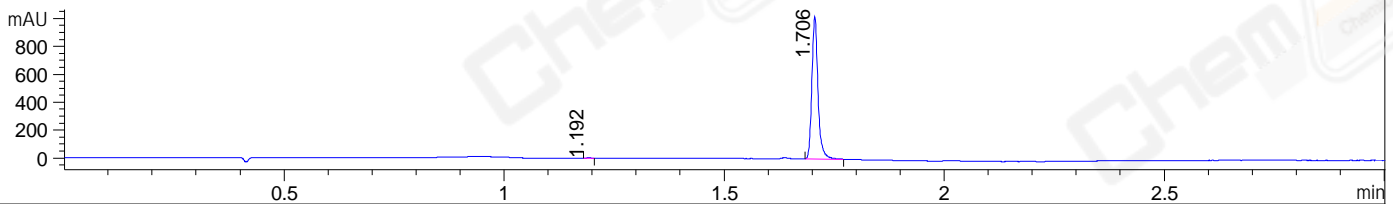
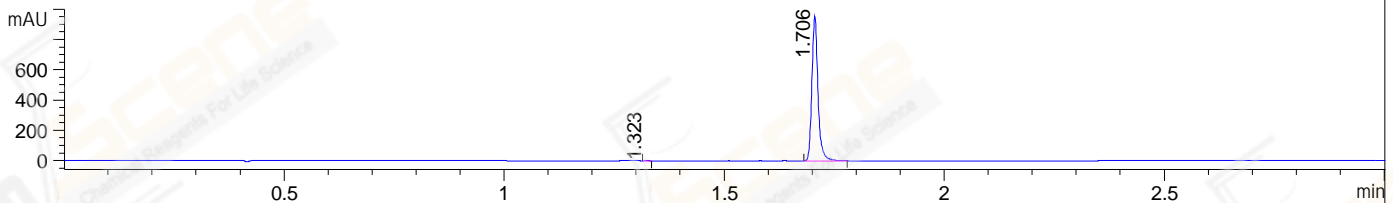


File ..DATA\2020\20201214\1200\BIZ2020-D10-WLQ10.D Tgt Mass (CHM):
 Injection Date : 14 Dec 20 12:34 pm +0800 Seq. Line : 36
 Sample Name : BIZ2020-D10-WLQ10 Location : P1-A-07
 Acq. Operator : zyj_1547 Inj : 1
 Spec. Reported : MS Integration Inj Volume : 1 ul
 Acq. Method : D:\Chem32\1\data\2020\20201214\1200\1-POS-3MIN.M
 Analysis Method : D:\CHEM32\1\DATA\2020\20201214\1200\1-POS-3MIN.M
 CAS NO. : 1351761-44-8
 Method Info : Mobile Phase: A: water(0.01%TFA) B:ACN(0.01%TFA)
 Gradient: 5% to 95%B within 1.3 min
 Flow Rate :1.8ml/min
 Column :SunFire C18, 4.6*50mm,3.5um A-RP-698

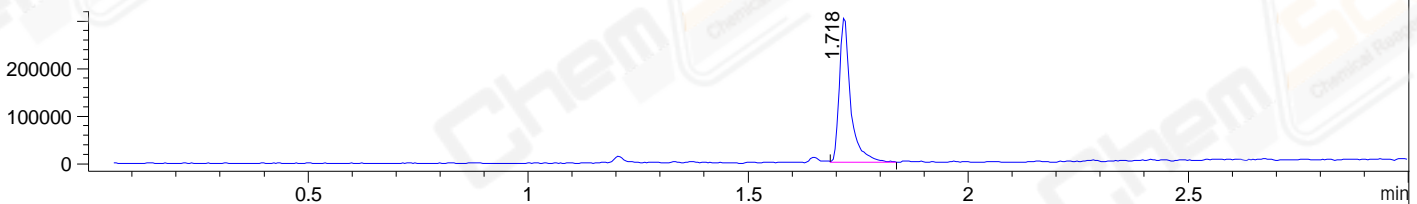
DAD1 B, Sig=214,4 Ref=off



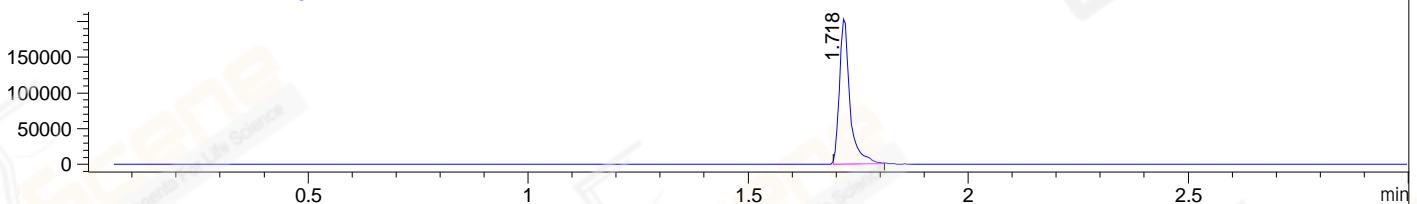
DAD1 C, Sig=254,4 Ref=off



MSD1 TIC, MS File ES-API, Pos, Scan, Frag: 70



Ion 444, MSD1 444, Target Mass 443 +H Positive, EIC=443.7:444.7



Integration Results for DAD1 B, Sig=214,4 Ref=off

RetTim	Width	Area	Height	Area%	MS(+)
1.19	0.01	3.39	4.06	0.34	117
1.71	0.02	985.25	1022.98	99.66	444

Integration Results for DAD1 C, Sig=254,4 Ref=off

RetTim	Width	Area	Height	Area%	MS(+)
1.32	0.01	0.39	0.55	0.04	ND
1.71	0.02	917.37	955.97	99.96	444

Integration Results for MSD1 TIC, MS File

RetTim	Width	Area	Height	Area%	MS(+)
1.72	0.03	545092.06	308203.25	100.00	444

Ret. Time: 1.72

<<<< POSITIVE SPECTRA >>>>

ES-API Positive

