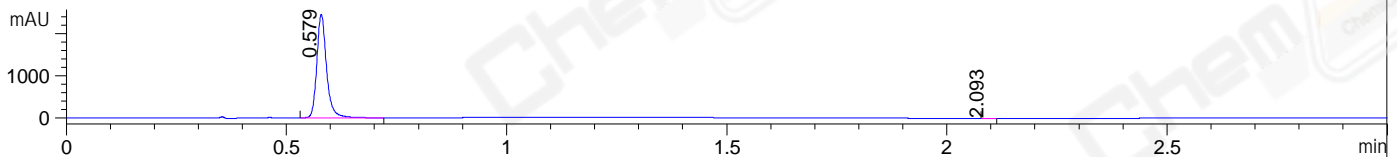
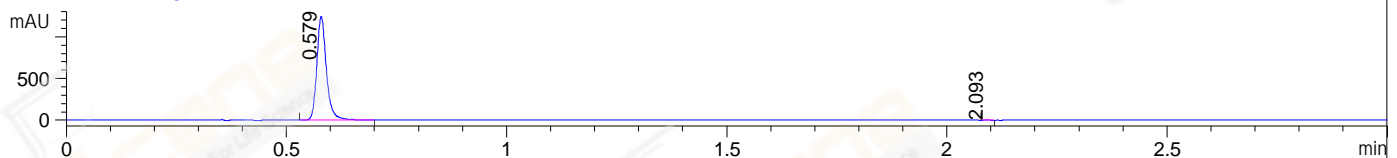


File ..Data\20171226\20171226-2\LJ2017-1225-0075.D Tgt Mass (CHM):  
Injection Date : 26 Dec 17 8:15 pm +0800 Seq. Line : 59  
Sample Name : LJ2017-1225-0075 Location : P2-B-07  
Acq. Operator : SYSTEM Inj : 1  
Spec. Reported : MS Integration Inj Volume : 1 ul  
Acq. Method : D:\LCMS03\Data\20171226\20171226-2\1-POS-3MIN.M  
Analysis Method : D:\LCMS03\Data\20171226\20171226-2\1-POS-3MIN.M  
CAS NO. : 501-30-4  
Method Info : Mobile Phase: A: water(0.01%TFA) B:ACN(0.01%TFA)  
Gradient: 5% to 95%B within 1.3 min  
Flow Rate :1.8ml/min  
Column :SunFire C18, 4.6\*50mm,3.5um A-RP-186  
Oven Temperature : 45C

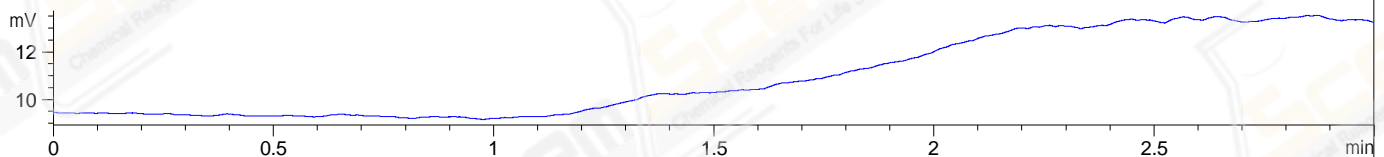
DAD1 A, Sig=214,4 Ref=off



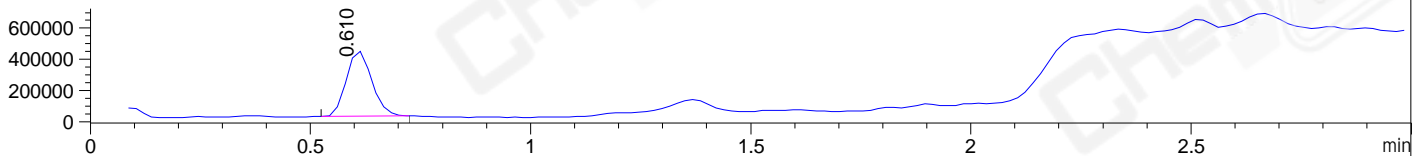
DAD1 B, Sig=254,4 Ref=off



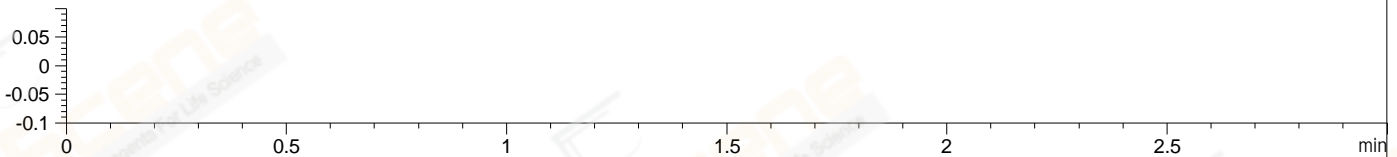
ELS1 A, ELSD Signal



MSD1 TIC, MS File ES-API, Pos, Scan, Frag: 70



Ion 1, MSD1 1, Target Mass 0 +H Positive, EIC=0.7:1.7



Integration Results for DAD1 A, Sig=214,4 Ref=off

RetTim	Width	Area	Height	Area%	MS (+)
0.58	0.03	3755.24	2451.54	99.99	143
2.09	0.01	0.22	0.25	0.01	105

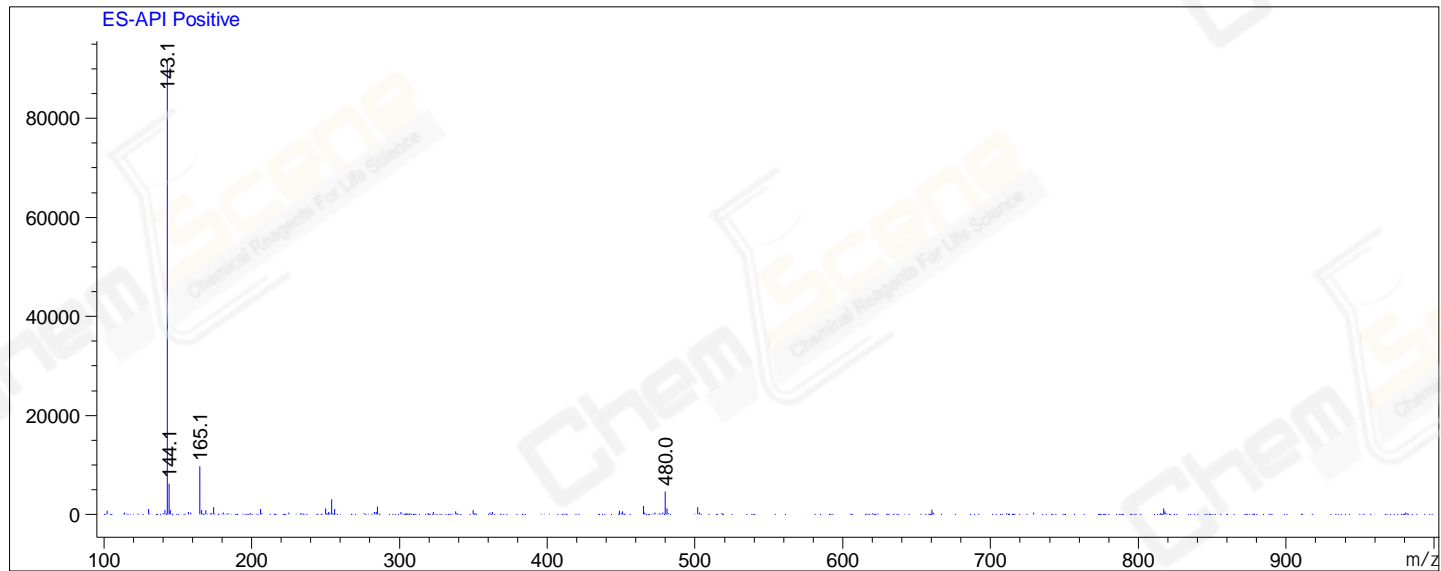
Integration Results for DAD1 B, Sig=254,4 Ref=off

RetTim	Width	Area	Height	Area%	MS (+)
0.58	0.03	1880.27	1244.44	100.00	143
2.09	0.01	0.06	0.09	0.00	105

Integration Results for MSD1 TIC, MS File

RetTim	Width	Area	Height	Area%	MS (+)
0.61	0.07	1681747.63	425008.25	100.00	143

Ret. Time: 0.61 <<<< POSITIVE SPECTRA >>>>



\*\*\* End of Report \*\*\*