

File ..0201207 2020-12-07 15-34-32\LZ8507-011-02.D Tgt Mass (CHM):

Injection Date : 7 Dec 20 5:03 pm +0800 Seq. Line : 21

Sample Name : LZ8507-011-02 Location : P2-C-05

Acq. Operator : SYSTEM Inj : 1

Spec. Reported : MS Integration Inj Volume : 0.2 ul

Acq. Method : D:\LCMS03\Data\20201207\20201207 2020-12-07 15-34-32\1-POS-UPLC2.0MIN(0.8ML

Analysis Method : D:\LCMS03\Data\2020\20201207\20201207 2020-12-07 15-34-32\1-POS-UPLC2.0MIN(CAS NO. : 1396776-45-6

Method Info : Mobile Phase: A: water(0.01%TFA) B:ACN(0.01%TFA)

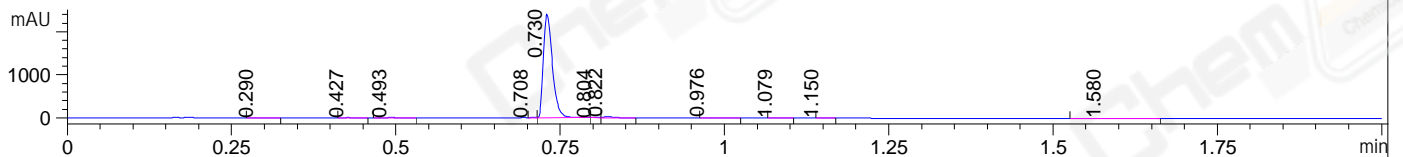
Gradient: 5% to 95%B within 0.6 min

Flow Rate :0.8ml/min

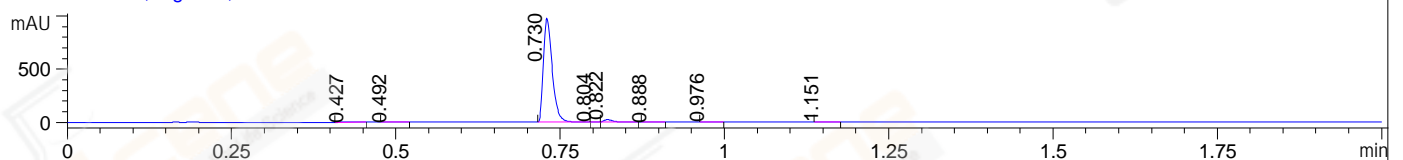
Column :Poroshell 120 EC- C18, 2.1\*50mm,1.9um A-RP-677

Oven Temperature : 45C

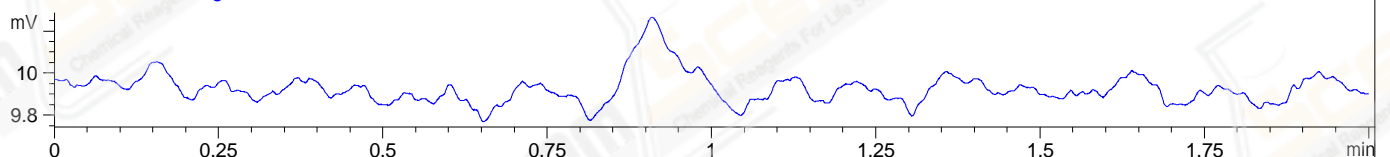
DAD1 A, Sig=214,4 Ref=off



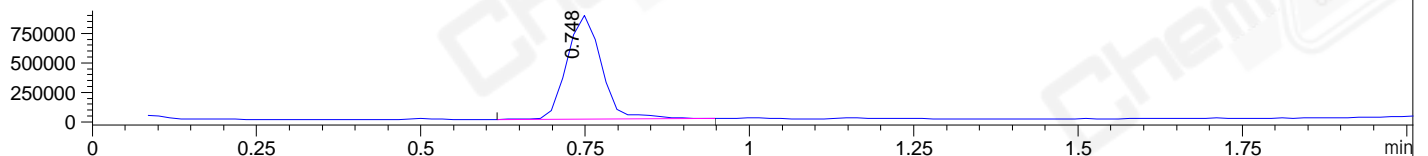
DAD1 B, Sig=254,4 Ref=off



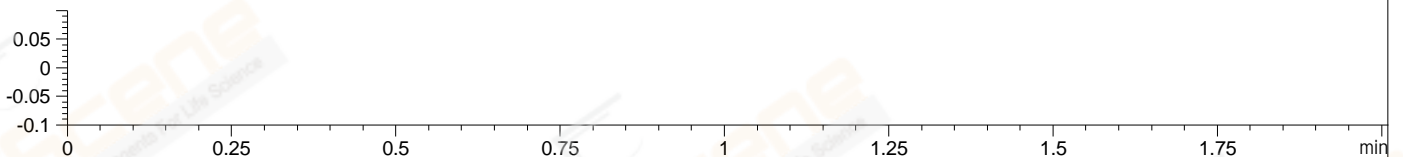
ELS1 A, ELSD Signal



MSD1 TIC, MS File ES-API, Pos, Scan, Frag: 70



Ion 1, MSD1 1, Target Mass 0 +H Positive, EIC=0.7:1.7



Integration Results for DAD1 A, Sig=214,4 Ref=off

RetTim	Width	Area	Height	Area%	MS (+)
0.29	0.03	3.49	2.32	0.15	161
0.43	0.02	1.78	1.60	0.08	161
0.49	0.02	1.86	1.69	0.08	240
0.71	0.01	1.23	2.53	0.05	318
0.73	0.02	2301.61	2404.28	98.16	318
0.80	0.01	2.43	3.90	0.10	316
0.82	0.02	20.26	22.22	0.86	316
0.98	0.02	5.26	5.10	0.22	317
1.08	0.01	3.25	3.78	0.14	317
1.15	0.01	1.20	1.46	0.05	317
1.58	0.02	2.42	1.65	0.10	161

Integration Results for DAD1 B, Sig=254,4 Ref=off

RetTim	Width	Area	Height	Area%	MS (+)
0.43	0.02	1.02	0.89	0.11	161
0.49	0.02	0.74	0.75	0.08	240
0.73	0.02	912.22	977.34	96.98	318

0.80	0.01	1.13	2.14	0.12	316
0.82	0.01	21.47	23.89	2.28	316
0.89	0.01	0.72	0.82	0.08	317
0.98	0.01	1.95	2.23	0.21	317
1.15	0.01	1.42	1.58	0.15	317

## Integration Results for ELS1 A, ELSD Signal

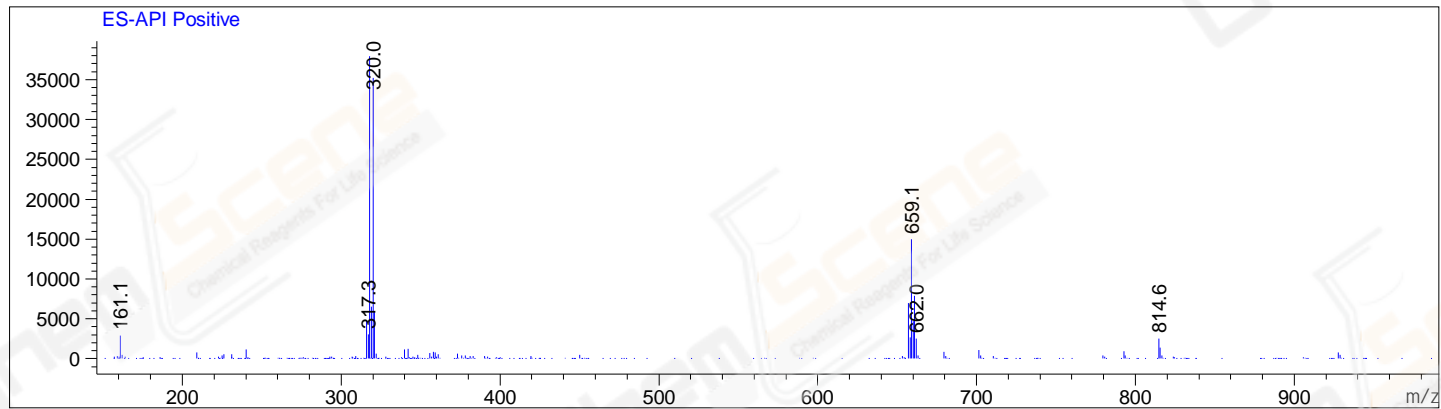
RetTim	Width	Area	Height	Area%	MS(+)
--------	-------	------	--------	-------	-------

## Integration Results for MSD1 TIC, MS File

RetTim	Width	Area	Height	Area%	MS(+)
0.75	0.06	3217570.00	878119.56	100.00	318

Ret. Time: 0.75

<<<< POSITIVE SPECTRA >>>>



\*\*\* End of Report \*\*\*