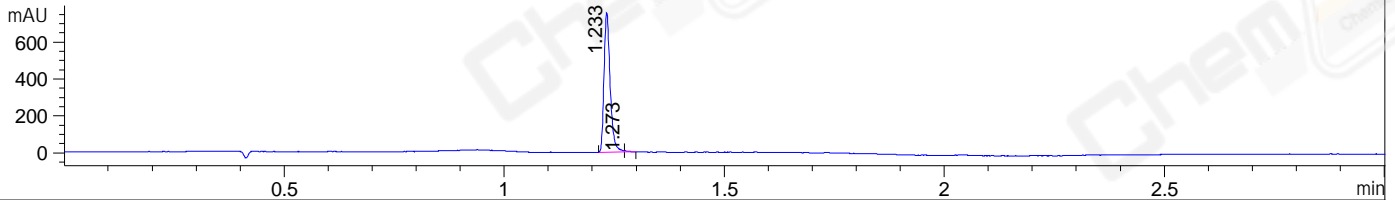
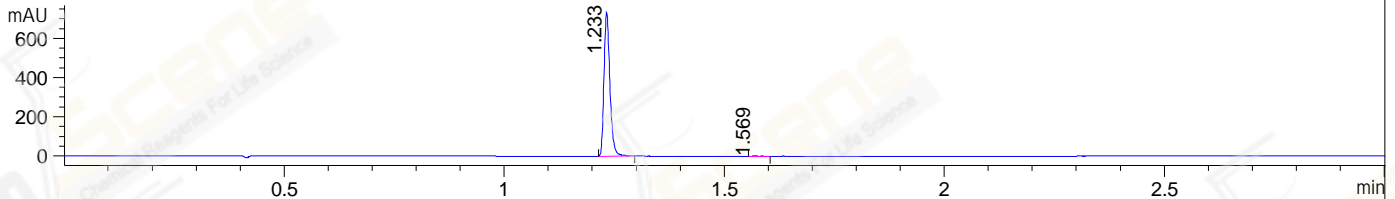


File ..32\1\DATA\2020\20201231\1225\LF8870-005-2.D Tgt Mass (CHM):  
 Injection Date : 31 Dec 20 3:18 pm +0800 Seq. Line : 76  
 Sample Name : LF8870-005-2 Location : P1-F-01  
 Acq. Operator : zyj\_1547 Inj : 1  
 Spec. Reported : MS Integration Inj Volume : 1 ul  
 Acq. Method : D:\Chem32\1\data\2020\20201231\1225\1-POS-3MIN.M  
 Analysis Method : D:\CHEM32\1\DATA\2020\20201231\1225\1-POS-3MIN.M  
 CAS NO. : 2492423-29-5  
 Method Info : Mobile Phase: A: water(0.01%TFA) B:ACN(0.01%TFA)  
 Gradient: 5% to 95%B within 1.3 min  
 Flow Rate :1.8ml/min  
 Column :SunFire C18, 4.6\*50mm,3.5um A-RP-698

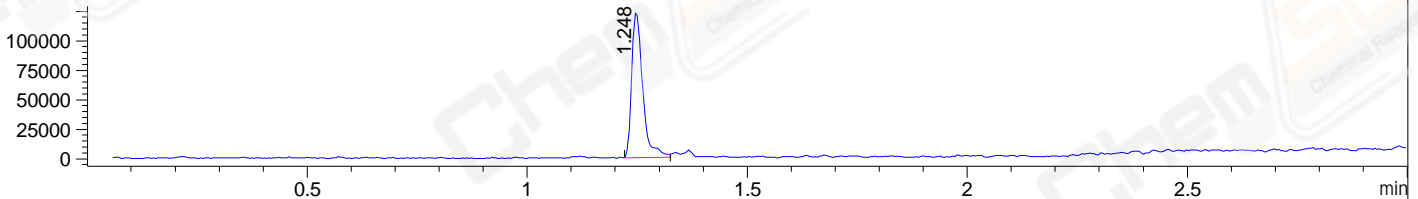
DAD1 B, Sig=214,4 Ref=off



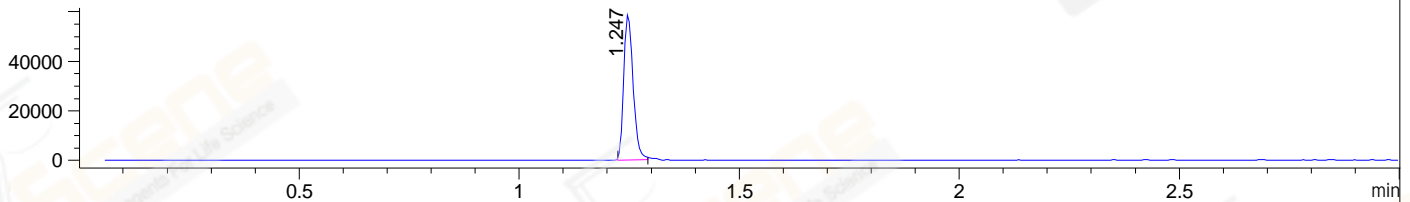
DAD1 C, Sig=254,4 Ref=off



MSD1 TIC, MS File ES-API, Pos, Scan, Frag: 70



Ion 330, MSD1 330, Target Mass 329 +H Positive, EIC=329.7:330.7



## Integration Results for DAD1 B, Sig=214,4 Ref=off

RetTim	Width	Area	Height	Area%	MS (+)
1.23	0.02	728.18	758.18	99.30	330
1.27	0.01	5.10	6.88	0.70	330

## Integration Results for DAD1 C, Sig=254,4 Ref=off

RetTim	Width	Area	Height	Area%	MS (+)
1.23	0.02	682.85	735.13	99.81	330
1.57	0.03	1.33	0.81	0.19	ND

## Integration Results for MSD1 TIC, MS File

RetTim	Width	Area	Height	Area%	MS (+)
1.25	0.03	212786.28	124476.23	100.00	330

Ret. Time: 1.25

<<<< POSITIVE SPECTRA >>>>

ES-API Positive

