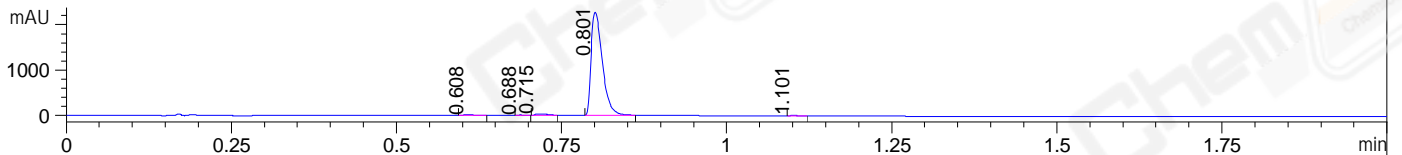
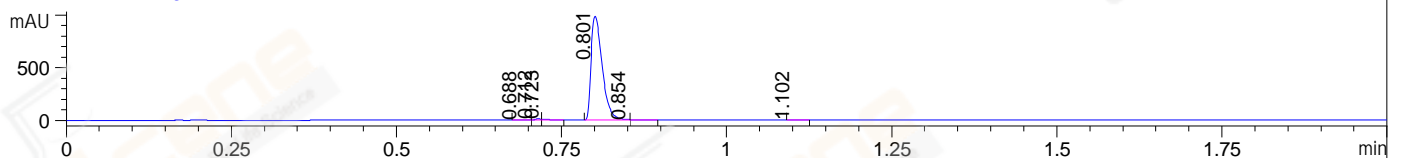


File ..0210106 2021-01-06 08-04-36\HTQ8340-019-1.D Tgt Mass (CHM):
Injection Date : 6 Jan 21 9:16 am +0800 Seq. Line : 20
Sample Name : HTQ8340-019-1 Location : P1-B-04
Acq. Operator : SYSTEM Inj : 1
Spec. Reported : MS Integration Inj Volume : 0.2 ul
Acq. Method : D:\LCMS03\Data\20210106\20210106 2021-01-06 08-04-36\1-POS-UPLC2.0MIN(0.8ML
Analysis Method : D:\LCMS03\Data\20210106\20210106 2021-01-06 08-04-36\1-POS-UPLC2.0MIN(0.8ML
CAS NO. : 1234015-54-3
Method Info : Mobile Phase: A: water(0.01%TFA) B:ACN(0.01%TFA)
Gradient: 5% to 95%B within 0.6 min
Flow Rate : 0.8ml/min
Column : Poroshell 120 EC- C18, 2.1*50mm,1.9um A-RP-677
Oven Temperature : 45C

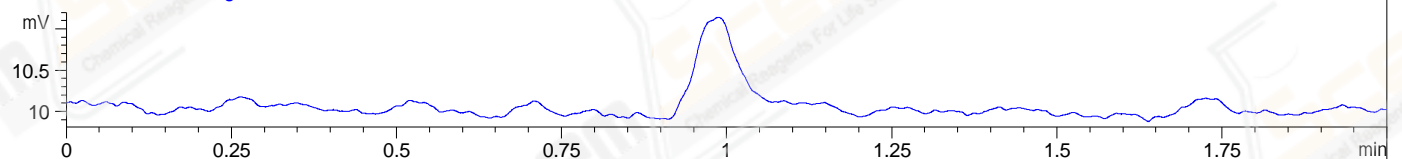
DAD1 A, Sig=214,4 Ref=off



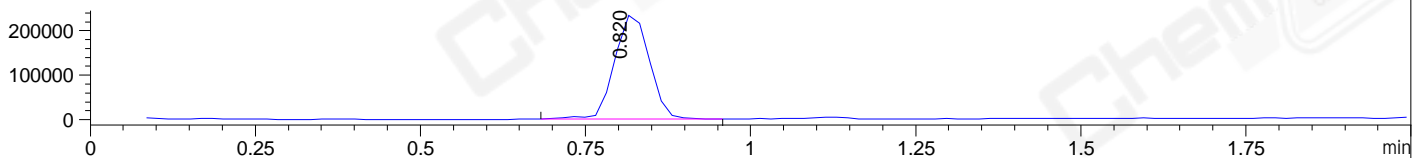
DAD1 B, Sig=254,4 Ref=off



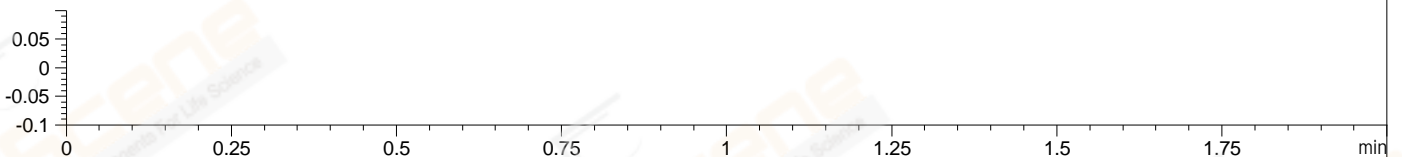
ELS1 A, ELSD Signal



MSD1 TIC, MS File ES-API, Pos, Scan, Frag: 70



Ion 1, MSD1 1, Target Mass 0 +H Positive, EIC=0.7:1.7



Integration Results for DAD1 A, Sig=214,4 Ref=off

RetTim	Width	Area	Height	Area%	MS (+)
0.61	0.01	10.07	11.74	0.37	ND
0.69	0.01	3.96	5.66	0.15	ND
0.71	0.02	33.35	27.86	1.22	ND
0.80	0.02	2675.35	2269.07	98.03	366
1.10	0.01	6.30	8.41	0.23	466

Integration Results for DAD1 B, Sig=254,4 Ref=off

RetTim	Width	Area	Height	Area%	MS (+)
0.69	0.01	1.92	2.22	0.16	ND
0.71	0.01	7.01	11.31	0.60	ND
0.72	0.01	7.29	9.67	0.62	384
0.80	0.02	1151.37	986.35	98.05	366
0.85	0.02	3.63	3.80	0.31	366
1.10	0.01	3.06	3.77	0.26	466

Integration Results for ELS1 A, ELSD Signal

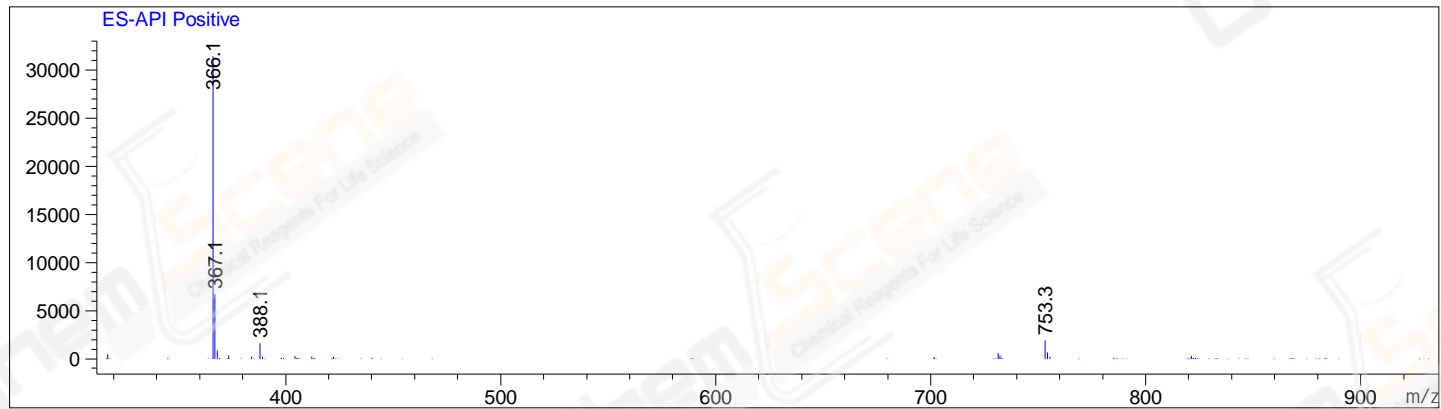
Integration Results for MSD1 TIC, MS File

RetTim	Width	Area	Height	Area%	MS(+)
0.82	0.06	861800.56	237403.17	100.00	366

RetTim	Width	Area	Height	Area%	MS(+)
--------	-------	------	--------	-------	-------

Ret. Time: 0.82

<<<< POSITIVE SPECTRA >>>>



*** End of Report ***