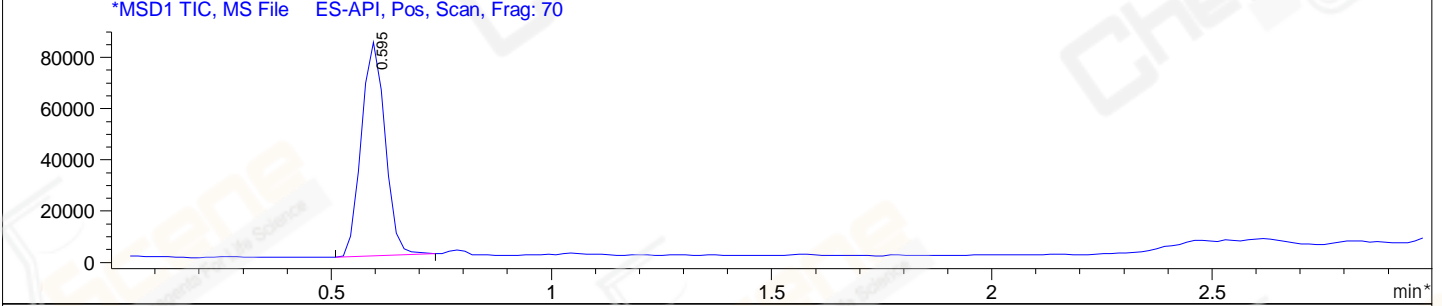
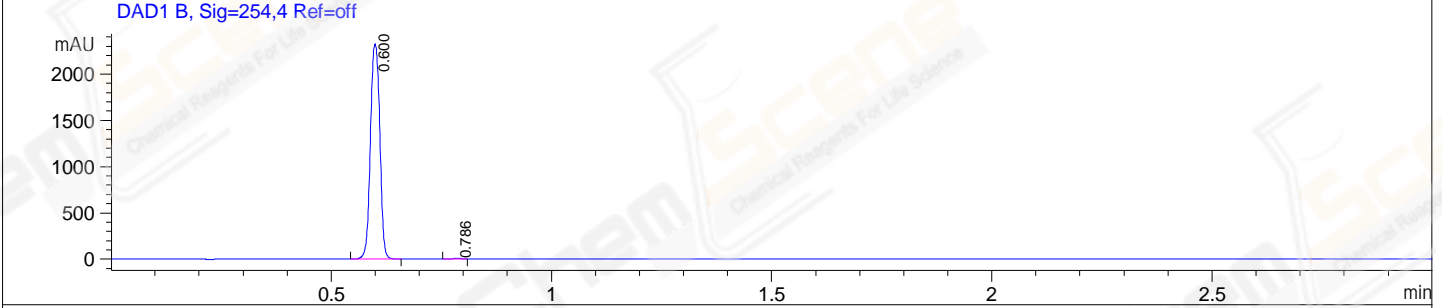
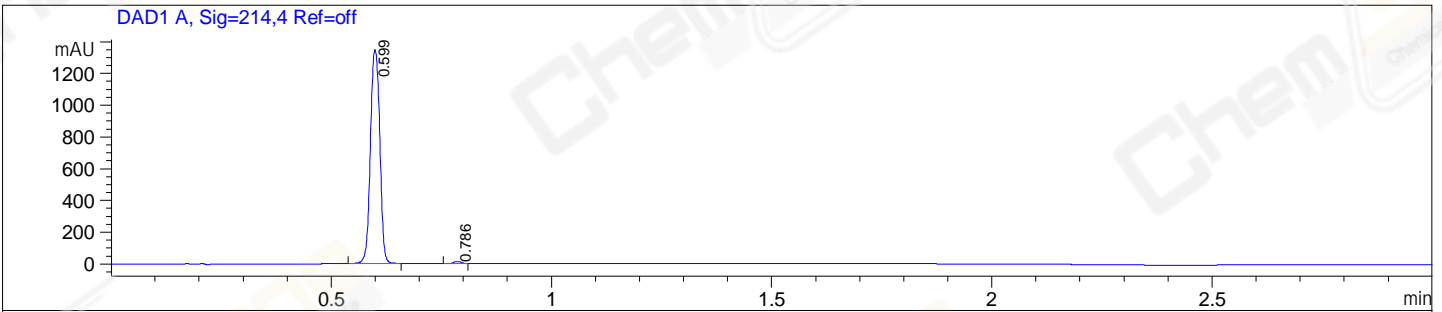


File E:\ChemStation\1\DATA\2023\2023-07\2023-07-21\CPK2023-721-95545-UPLC-MS-10-008611.D
 Injection Date : 21-Jul-23, 17:54:29 Tgt Mass(EZX) :
 Sample Name : CPK2023-721-95545 Location : P2-B-04
 Acq. Operator : LY_2278 Inj : 1
 Spec. Reported : MS Integration Inj Volume : 1 ul
 Acq. Method : E:\ChemStation\1\Methods\1-POS-UPLC3.0MIN(1.2)(150-1000).M
 Analysis Method : E:\CHEMSTATION\1\METHODS\1-POS-UPLC3.0MIN(1.2)(150-1000).M
 CAS NO. : 103-90-2 WalkUp method: '1-POS-3MIN' Project: CPK2023
 Method Info : Mobile Phase: A: water(0.01%TFA) B:ACN(0.01%TFA)
 Gradient: 5% to 95%B within 2.0 min
 Flow Rate :1.2ml/min
 Column :Shim-pack Scepter C18-120, 3.0*33mm,3um
 Oven Temperature : 45C



Integration Results for DAD1 A, Sig=214,4 Ref=off

RetTim	Width	Area	Height	Area%
0.60	0.02	1980.01	1344.33	99.30
0.79	0.02	14.06	12.78	0.70

Integration Results for DAD1 B, Sig=254,4 Ref=off

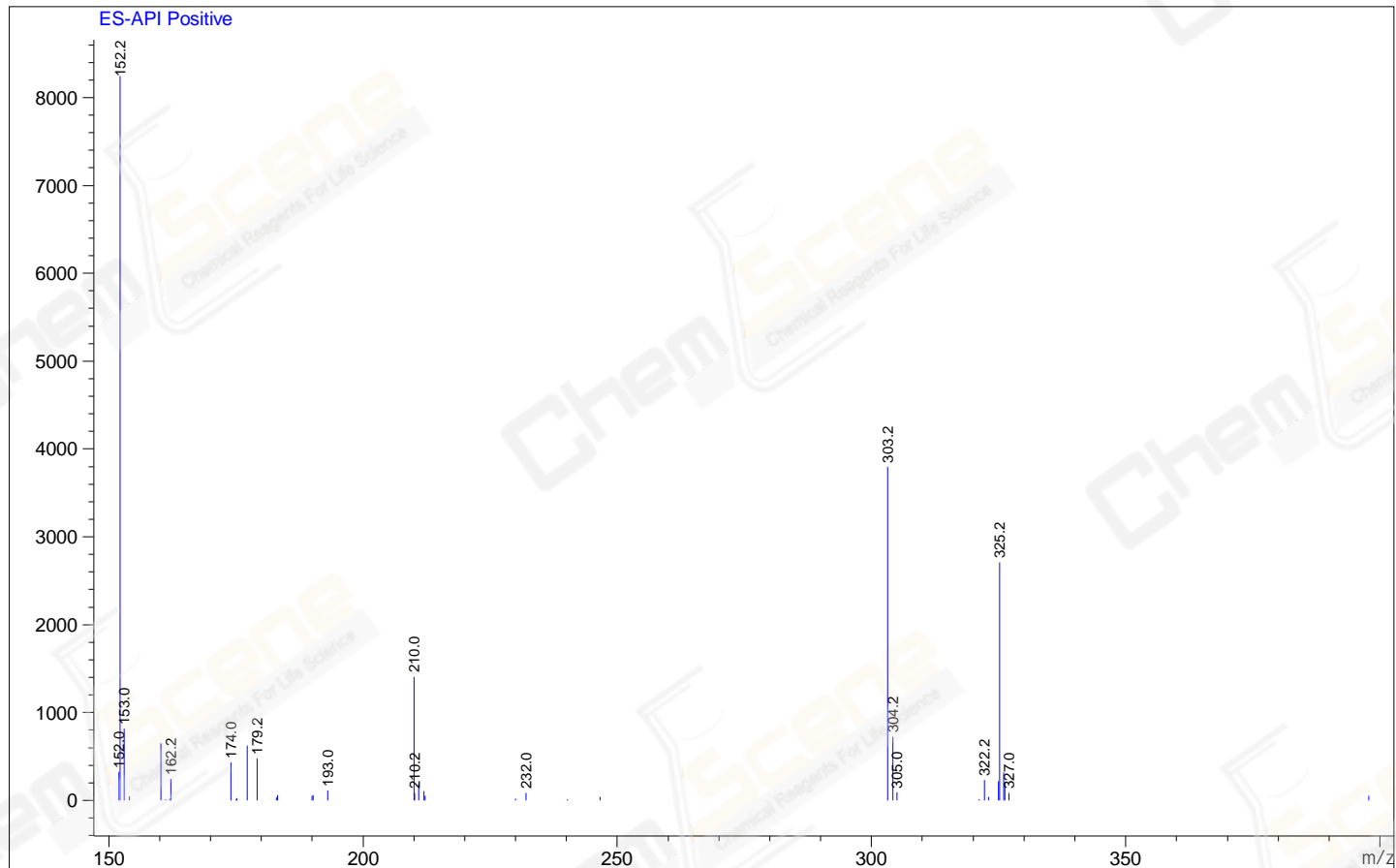
RetTim	Width	Area	Height	Area%
0.60	0.02	3424.95	2321.41	99.67
0.79	0.02	11.35	9.85	0.33

Integration Results for MSD1 TIC, MS File

RetTim	Width	Area	Height	Area%
0.60	0.06	311737.16	83278.34	100.00

Ret. Time: 0.60

<<<< POSITIVE SPECTRA >>>>



*** End of Report ***