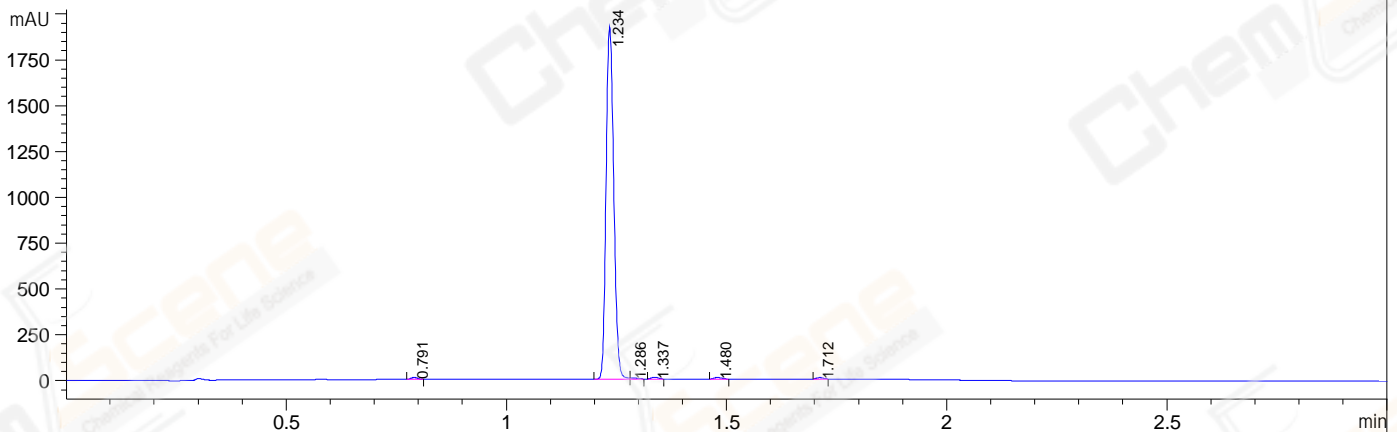
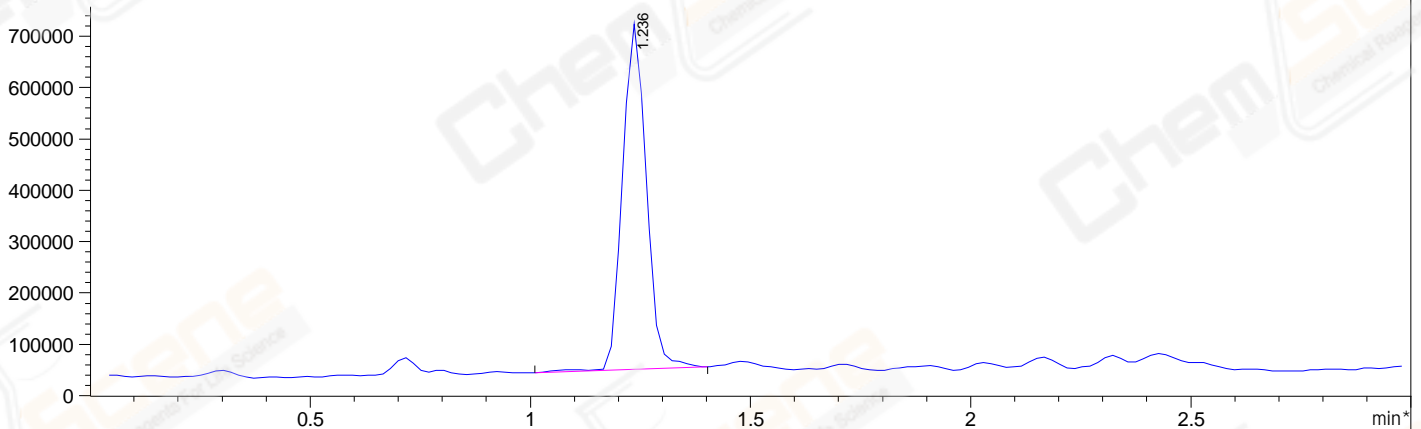


File E:\ChemStation\1\DATA\2023\2023-11\2023-11-22\CPK2023-N22-97021-UPLC-MS-10-020242.D  
 Injection Date : 22-Nov-23, 14:18:20 Tgt Mass(EZX) :  
 Sample Name : CPK2023-N22-97021 Location : P1-E-08  
 Acq. Operator : LY\_2278 Inj : 1  
 Spec. Reported : MS Integration Inj Volume : 0.8 ul  
 Acq. Method : E:\ChemStation\1\Methods\1-POS-UPLC3.0MIN(1.2)(150-1000).M  
 Analysis Method : E:\CHEMSTATION\1\METHODS\1-POS-UPLC3.0MIN(1.2)(150-1000).M  
 CAS NO. : 16673-34-0 WalkUp method: '1-POS-3MIN' Project: CPK2023  
 Method Info : Mobile Phase: A: water(0.01%TFA) B:ACN(0.01%TFA)  
 Gradient: 5% to 95%B within 2.0 min  
 Flow Rate :1.2ml/min  
 Column :Shim-pack Scepter C18-120, 3.0\*33mm,3um  
 Oven Temperature : 45C

DAD1 A, Sig=214,4 Ref=off



MSD1 TIC, MS File ES-API, Pos, Scan, Frag: 70



Integration Results for DAD1 A, Sig=214,4 Ref=off

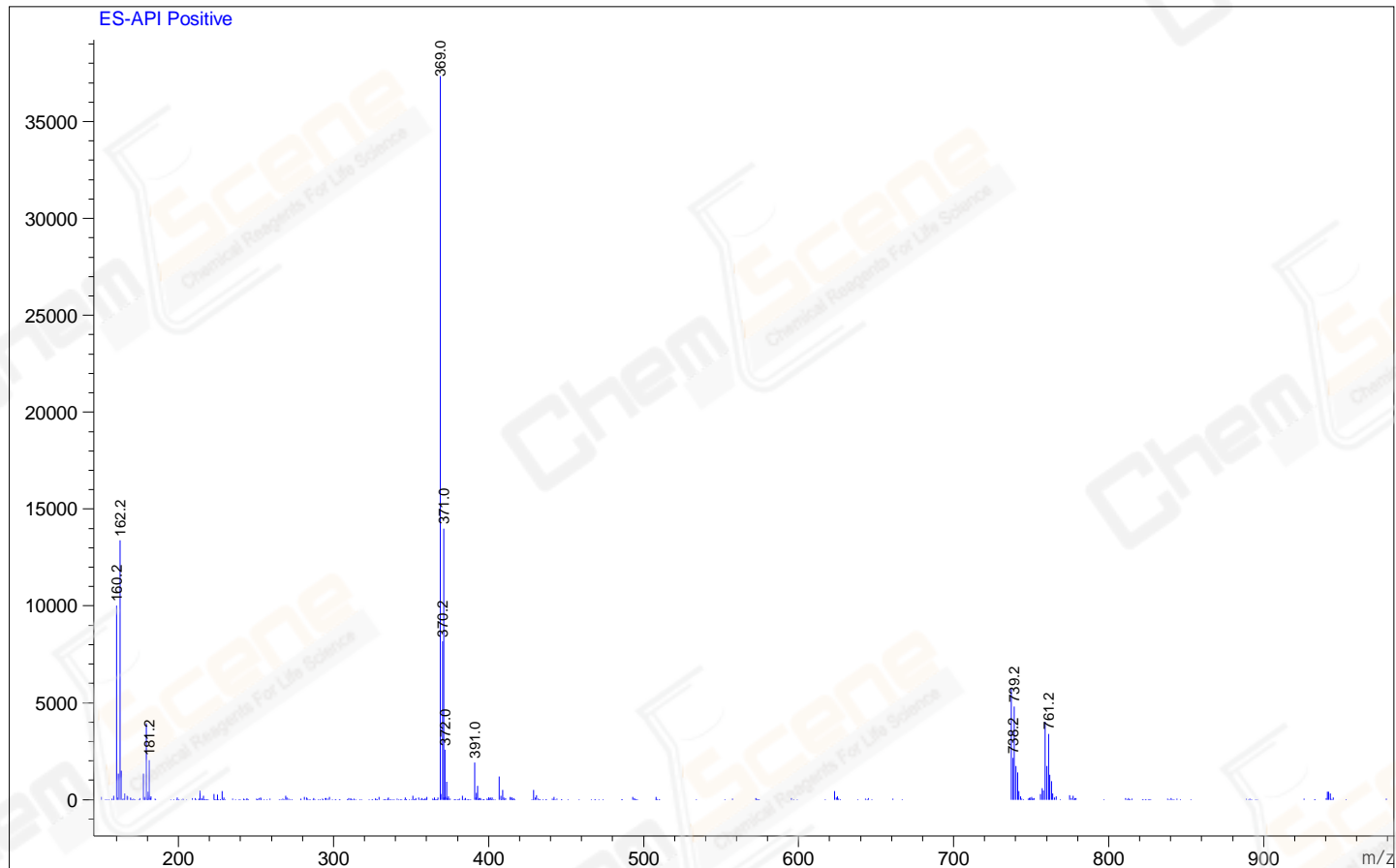
RetTim	Width	Area	Height	Area%
0.79	0.02	10.29	9.94	0.43
1.23	0.02	2333.14	1924.70	98.00
1.29	0.02	6.79	6.67	0.29
1.34	0.02	11.09	10.08	0.47
1.48	0.02	11.27	8.86	0.47
1.71	0.02	8.15	7.72	0.34

Integration Results for MSD1 TIC, MS File

RetTim	Width	Area	Height	Area%
1.24	0.06	2543425.25	672505.06	100.00

Ret. Time: 1.24

<<<< POSITIVE SPECTRA >>>>



\*\*\* End of Report \*\*\*